

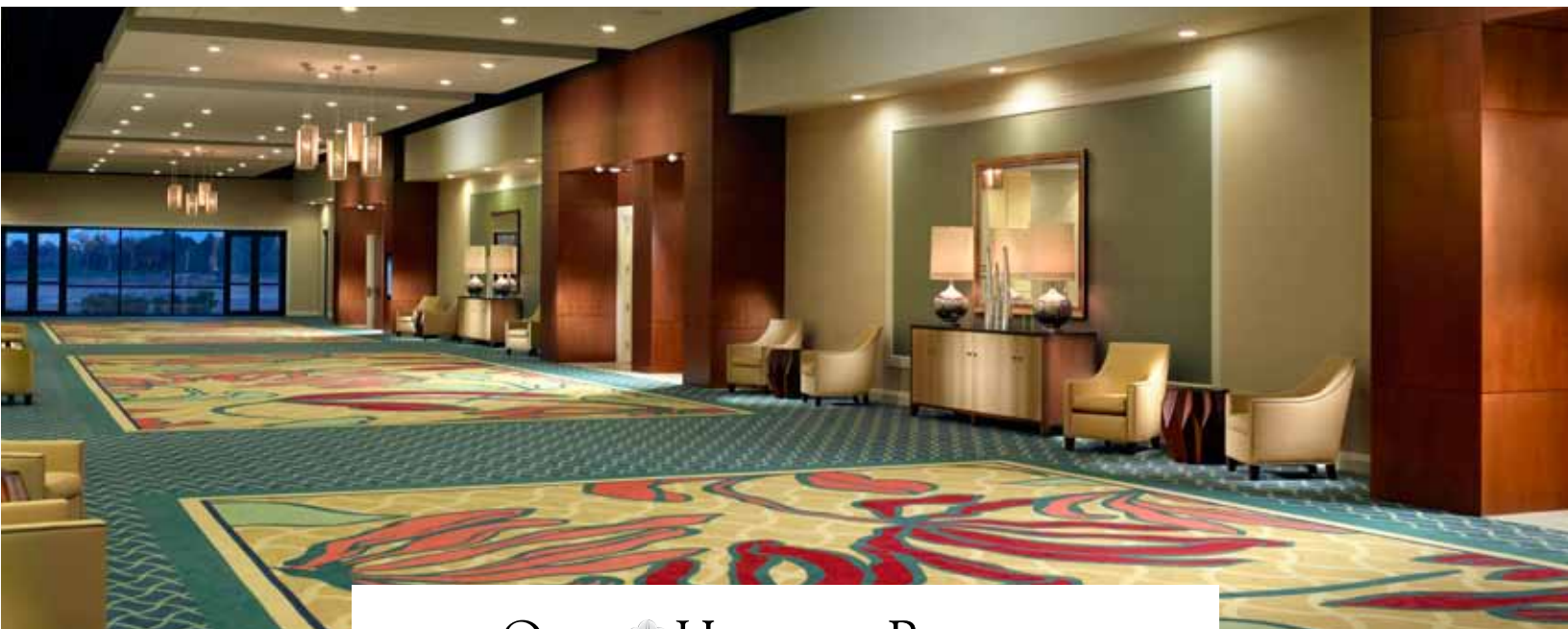


OMNI  HOTELS & RESORTS
championsgate | orlando

Greater Orlando

Meeting attendees will enjoy the luxury of staying close to the city's attractions without the distractions. Located in the master-planned community of ChampionsGate, the Omni Orlando Resort is just minutes from all of Orlando:

- 6 miles to Walt Disney World® Resort
- 8 miles to Celebration Town Center
- 10 miles to Downtown Disney® area
- 12 miles to Orlando Premium Outlets
- 14 miles to SeaWorld Orlando
- 25 miles to the Citrus Bowl
- 26 miles to Orlando International Airport



OMNI  HOTELS & RESORTS
championsgate | orlando

407-238-6526 • omnihotels.com/championsgateorlando

Omni Orlando Resort at ChampionsGate • 1500 Masters Blvd. • ChampionsGate, Florida 33896

More to do at ChampionsGate

The Omni Orlando Resort at ChampionsGate features a number of outstanding restaurants, relaxing amenities and exciting attractions to welcome and engage attendees throughout their stays.

ZEN

Zen offers a range of pan-Asian dishes in an authentic setting highlighted by an intimate three-tiered Sushi and Sake Bar. Enjoy Boats of Sushi to Zen's special Szechwan Beef.

TREVI'S

Serving delicious meals throughout the day, Trevi's offers a bountiful breakfast buffet as well as indoor and outdoor dining in the Italian herb garden, where chefs harvest fresh basil, thyme and rosemary.

DAVID'S CLUB

While flat-screen TVs air favorite sporting events, David's Club serves up everything from Wild Striped Bass and Maryland Crab Cakes to hand-cut Filet Mignon and Braised Short Ribs.

PIPER'S BAR & GRILLE

Located at the ChampionsGate Clubhouse, this casual dining spot serves breakfast and lunch, featuring healthy entrees and fine bar cocktails. Take the shuttle, conveniently available near the formal pool.

CHAMPIONSHIP GOLF

Golfers will enjoy 36 holes on two Greg Norman-designed golf courses and private instruction at David Leadbetter Golf Academy world headquarters.

LAZY RIVER

Float away on this relaxing 850-foot winding river and soak up the sun while tubing through the beautiful grounds.

PRIVATE CABANAS & FORMAL POOL

Relax in one of eight poolside cabanas, each with luxurious lounges, a ceiling fan, a refrigerator stocked with beverages, a flat-screen TV and Wi-Fi access.

MOKARA SPA

Omni's signature spa offers a full range of treatments — from massages and body wraps to manicures, pedicures and facials, and full salon services.

FIRE PIT

Cozy up in the evening with a seat near our large fire pit for a fun campfire-like night of entertainment.





Your Business. Your Pleasure.

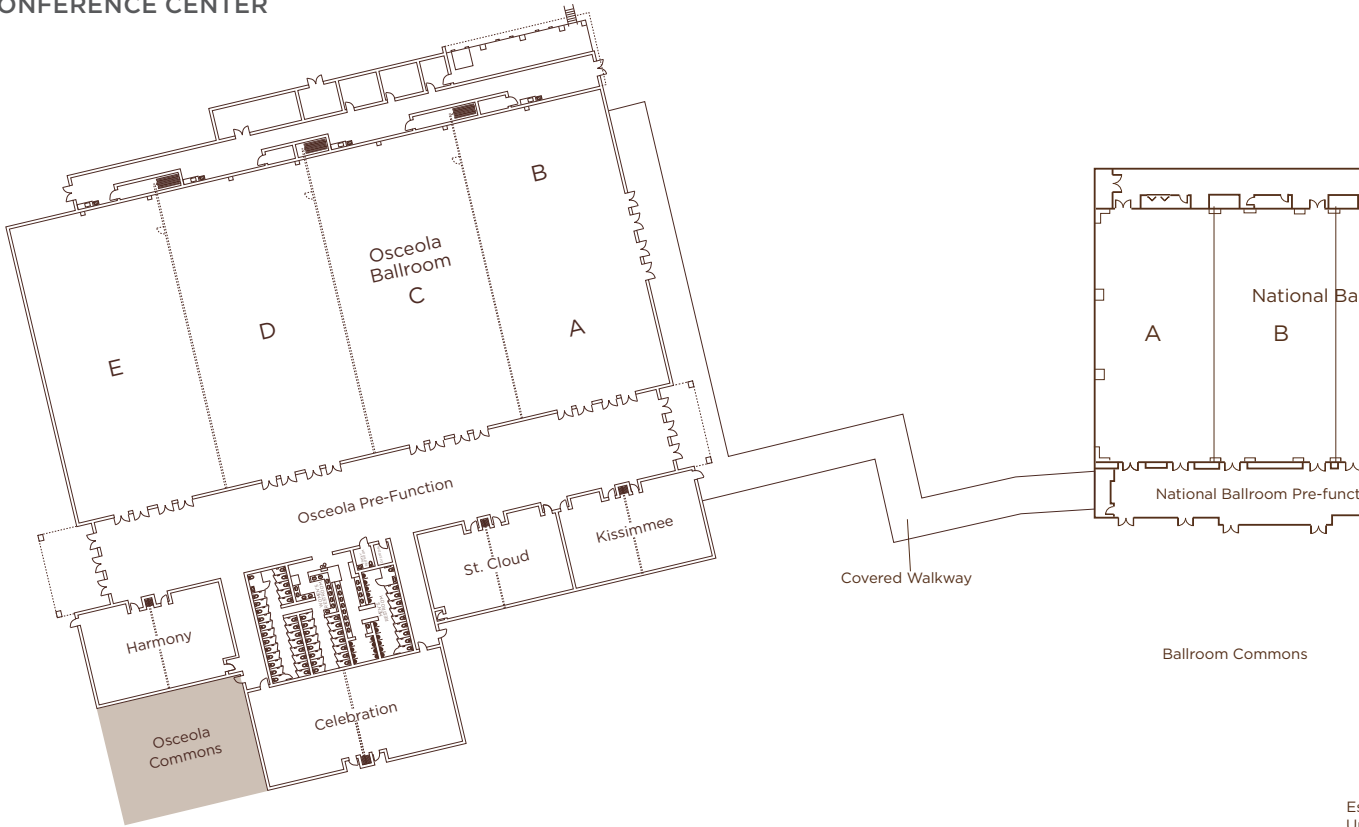
The Omni Orlando Resort at ChampionsGate is a rare treat for meeting attendees. With 128,000 square feet of flexible meeting and banquet space, our catering and conference services team assures every event will be nothing short of spectacular.



Events at Omni in Orlando are now grander than ever with the addition of the 46,000-square foot Osceola Conference Center. Our 28,800-, 25,000- and 20,000-square foot ballrooms have separate pre-function spaces that offer your group privacy and individual access.

- 720 guest rooms and suites
- Two- and three-bedroom luxury villas
- Three ballrooms ranging from 20,000 to 28,800 square feet
- Three pre-function areas ranging from 5,400 to 8,400 square feet
- 34 additional meeting rooms ranging from 400 to 2,900 square feet
- 70,000 square feet of outdoor event space
- 24-hour business center

OSCEOLA CONFERENCE CENTER

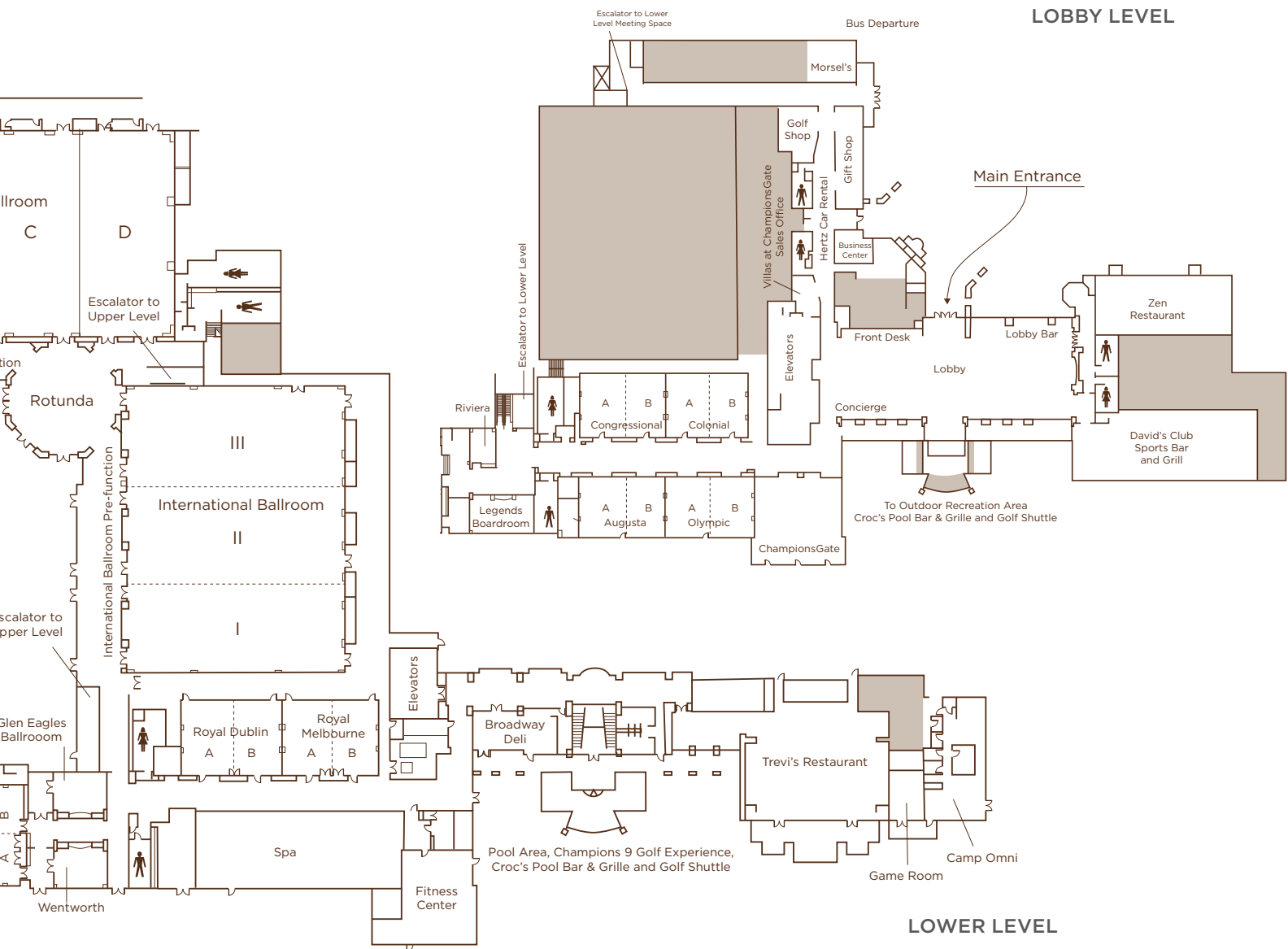


Osceola Conference Center Meeting Space

ROOM	SQUARE FOOTAGE	DIMENSIONS L X W	CEILING HEIGHT	WINDOWS	THEATER STYLE	CLASSROOM 18" TABLE	BANQUET 72" RDS	RECEPTION	EXHIBITS 8' x 10'	EXHIBITS 10' x 10'	CONFERENCE	U-SHAPE	HOLLOW SQUARE
Osceola Ballroom	28,872	228 x 105	20'	No	3,200	2,000	2,400	3,000	180	150	-	-	-
Osceola A, B (each)	3,609	57 x 53	20'	No	400	250	300	360	25	20	120	100	85
Osceola C, D, E (each)	7,218	57 x 105	20'	No	800	500	600	720	45	35	240	200	175
Osceola A & B	7,218	57 x 105	20'	No	800	500	600	720	45	35	240	200	175
Osceola A, B, C, D	21,654	171 x 105	20'	No	2,400	1,500	1,800	2,200	135	110	-	-	-
Osceola C, D, E (any two)	14,436	114 x 105	20'	No	1,600	1,000	1,200	1,500	90	70	-	-	-
Osceola C, D, E	21,654	171 x 105	20'	No	2,400	1,500	1,800	2,200	135	110	-	-	-
Osceola Pre-Function	9,427	228 x 32	16'	Yes	-	-	-	850	-	-	-	-	-
Osceola Commons	12,100	110 x 110	-	-	-	-	500	750	-	-	-	-	-
Kissimmee	1,944	60 x 38.5	13'	Yes	220	80	170	195	12	10	65	60	50
Kissimmee A, B (each)	972	30 x 38.5	13'	Yes	110	40	80	100	6	5	30	30	25
St. Cloud	1,944	60 x 38.5	13'	Yes	220	80	170	195	12	10	65	60	50
St. Cloud A, B (each)	972	30 x 38.5	13'	Yes	110	40	80	100	6	5	30	30	25
Celebration	2,921	61 x 43	16'	Yes	330	120	250	300	18	15	100	90	75
Celebration A, B (each)	1,460	30.5 x 43	16'	Yes	165	60	120	150	9	10	50	40	35
Harmony	1,944	60 x 38.5	13'	Yes	220	80	160	195	12	10	65	60	50
Harmony A, B (each)	972	30 x 38.5	13'	Yes	110	40	80	100	6	5	30	30	25

Lower Level Ballrooms and Meeting Space

ROOM	SQUARE FOOTAGE	DIMENSIONS L X W	CEILING HEIGHT	WINDOWS	THEATER	CLASSROOM 18" TABLE	CRESCENT 72" RDS	BANQUET 72" RDS	RECEPTION	EXHIBITS 8' x 10'	EXHIBITS 10' x 10'	CONFERENCE	U-SHAPED	HOLLOW SQUARE
National Ballroom	24,631	215'5" x 114'3"	20'	No	2,600	1,500	1,120	1,600	2,600	156	125	-	-	-
National A, B, C (each)	6,157	53' x 114'3"	20'	No	650	400	280	400	650	40	32	-	-	-
National (any two salons)	12,314	106' x 114'3"	20'	No	1,350	800	560	800	1,350	80	64	-	-	-
National (any three salons)	18,471	159' x 114'3"	20'	No	2,000	950	840	1,200	2,000	120	96	-	-	-
National Ballroom Pre-function	5,545	-	14'	Yes	-	-	-	-	480	-	-	-	-	-
International Ballroom	19,315	121'4" x 159'1"	20'	No	2,000	1,150	945	1,350	2,000	121	97	-	-	-
International I, II, III (each room)	6,438	121'4" x 53'	20'	No	725	425	315	450	725	41	33	-	-	-
International (any two salons)	12,876	121'4" x 106'	20'	No	1,375	850	630	900	1,375	82	66	-	-	-
International Pre-function	5,456	-	14'	Yes	-	-	-	-	380	-	-	-	-	-
Ballroom Commons (outdoor area)	16,200	Grass/Concrete	-	Outdoors	-	-	-	680	1,200	-	-	-	-	-
Wentworth	588	28' x 21'	12'	Yes	50	32	21	30	40	-	-	20	20	24
St. Andrews	1,685	31'2" x 54'	12'	Yes	140	100	70	100	140	-	-	36	40	48
St. Andrews A, B (each)	842	31'2" x 27'	12'	Yes	70	50	35	50	70	-	-	18	20	24
Glen Eagles Boardroom	569	26'7" x 21'3"	12'	Yes	-	-	-	-	-	-	-	12	-	-
Royal Dublin	2,111	52'9" x 39'9"	12'	No	200	120	84	120	160	-	-	44	48	56
Royal Dublin A, B (each)	1,055	26'4" x 39'9"	12'	No	100	60	42	60	80	-	-	22	24	28
Royal Melbourne	2,035	51' x 39'9"	12'	No	200	120	84	120	160	-	-	44	48	56
Royal Melbourne A, B (each)	1,017	25'6" x 39'9"	12'	No	100	60	42	60	80	-	-	22	24	28
Golf Course Commons (outdoor area)	30,000	Grass/Concrete	-	Outdoors	-	-	-	1,400	2,000	-	-	-	-	-



Lobby Level Meeting Space

ROOM	SQUARE FOOTAGE	DIMENSIONS L X W	CEILING HEIGHT	WINDOWS	THEATER	CLASSROOM 18" TABLE	CRESCENT 72" RDS	BANQUET 72" RDS	RECEPTION	EXHIBITS 8' x 10'	EXHIBITS 10' x 10'	CONFERENCE	U-SHAPED	HOLLOW SQUARE
ChampionsGate (has outdoor patio)	2,704	52' x 52'	14'	Yes	280	152	126	180	200	-	-	52	60	72
Olympic	1,672	44'5" x 37'4"	14'	Yes	140	90	70	100	120	-	-	36	40	48
Olympic A, B (each)	836	22'2" x 37'4"	14'	Yes	70	45	35	50	60	-	-	18	20	24
Augusta	2,008	54'3" x 37'4"	14'	Yes	200	120	91	130	160	-	-	44	48	56
Augusta A, B (each)	1,004	26'3.5" x 37'4"	14'	Yes	100	60	42	60	80	-	-	22	24	28
Legends Executive Boardroom	974	40'1" x 24'3"	14'	Yes	-	-	-	-	-	-	-	18	-	-
Oakmont	1,685	31'2" x 54'	14'	Yes	140	100	70	100	140	-	-	36	40	48
Oakmont A, B (each)	842	31'2" x 27'	14'	Yes	70	50	35	50	70	-	-	18	20	24
Riviera	330	15' x 23'	14'	Yes	20	-	-	-	-	-	-	10	-	-
Congressional	2,035	51' x 39'9"	14'	No	200	120	91	130	-	-	-	-	-	-
Congressional A, B (each)	1,017	25'6" x 39'9"	14'	No	100	60	42	60	80	-	-	22	24	48
Colonial	2,035	51' x 39'9"	14'	No	200	120	91	130	160	-	-	44	48	56
Colonial A, B (each)	1,017	25'6" x 39'9"	14'	No	100	60	42	60	80	-	-	22	24	28
Lobby Level Pre-function	4,322	-	-	-	-	-	-	-	150	-	-	-	-	-

Other Indoor and Outdoor Function Space

ROOM	SQUARE FOOTAGE	DIMENSIONS L X W	CEILING HEIGHT	WINDOWS	THEATER	CLASSROOM 18" TABLE	CRESCENT 72" RDS	BANQUET 72" RDS	RECEPTION	EXHIBITS 8' x 10'	EXHIBITS 10' x 10'	CONFERENCE	U-SHAPED	HOLLOW SQUARE
2nd Floor Suites 1-5 (each)	442	17' x 26'	9'	Yes	40	24	-	30	35	-	-	20	20	24
Croc's Beach (outdoor area)	6,500	Sand Beach	-	Outdoors	-	-	-	300	400	-	-	-	-	-
Formal Pool	3,500	-	-	-	-	-	-	-	200	-	-	-	-	-
Family Pool	7,500	-	-	-	-	-	-	-	500	-	-	-	-	-
Fire Pit	750	-	-	-	-	-	-	-	75	-	-	-	-	-
Herb Garden	1,500	-	-	-	-	-	-	50	75	-	-	-	-	-

Meeting room capacities are determined by use of the "Arranger & Comfort Calculator," a standardized meeting room capacity measurement system used by Meeting Professionals International. Meeting room capacities do not take into account the space needed for AV setup, food stations or buffets. Classroom setup capacities are based on three persons per 6' table and four persons per 8' table.