

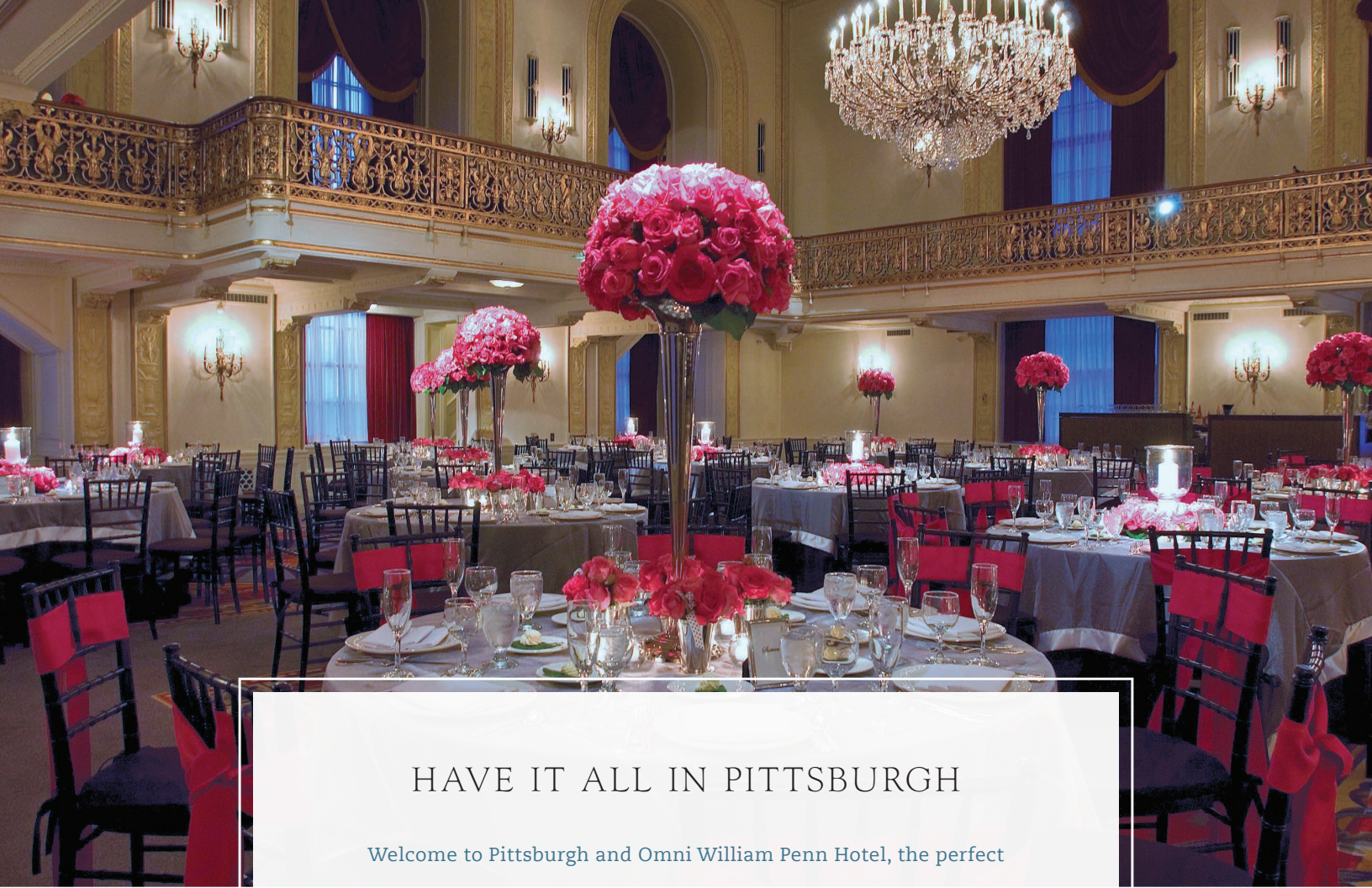
A photograph of a grand, ornate hotel lobby. In the foreground, a black grand piano is partially visible. The lobby features high ceilings with intricate moldings, large crystal chandeliers, and arched windows. Comfortable seating, including a large tufted sofa and several armchairs, is arranged on a patterned rug. The floor is made of polished tiles with a diamond pattern. The overall atmosphere is elegant and sophisticated.

## MEETING & EVENT GUIDE

OMNI  HOTELS & RESORTS  
william penn | pittsburgh

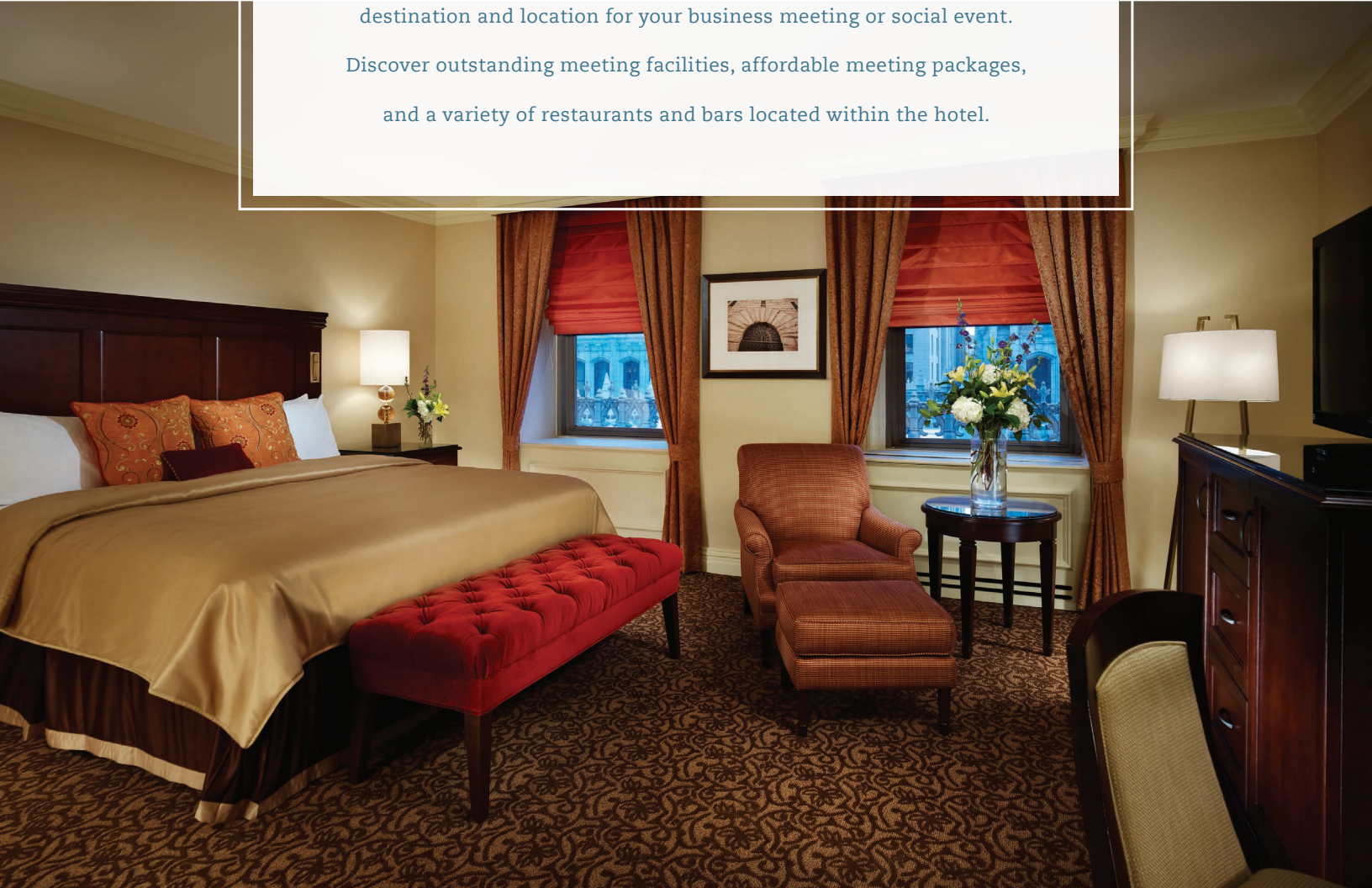
[OMNIHOTELS.COM/PITTSBURGH](http://OMNIHOTELS.COM/PITTSBURGH)





## HAVE IT ALL IN PITTSBURGH

Welcome to Pittsburgh and Omni William Penn Hotel, the perfect destination and location for your business meeting or social event. Discover outstanding meeting facilities, affordable meeting packages, and a variety of restaurants and bars located within the hotel.





## ABOUT OMNI WILLIAM PENN HOTEL



### THE ULTIMATE LUXURY HOTEL

Since 1916, Omni William Penn Hotel has been the business address for travelers from around the world. Celebrated for its elegant accommodations, award-winning cuisine and exquisite banquet space, this downtown landmark luxury hotel has been lavishly restored to its original grandeur.

The hotel boasts 597 guest rooms and suites, as well as 38 meeting rooms totaling 52,000 square feet of flexible event space, making it the perfect downtown location to host your event.

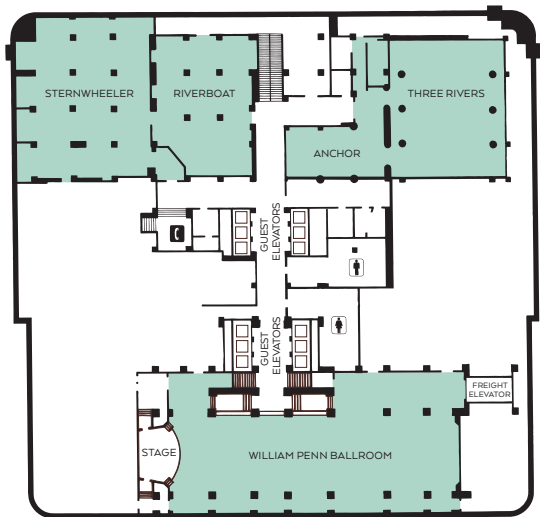
- 5,930 square-foot Grand Ballroom
- Three self-contained conference centers
- Air-wall free meeting space
- Videoconferencing
- 24-hour business center
- 24-hour state-of-the-art audio/visual services with on-site technicians
- Complimentary full-service 24-hour fitness center



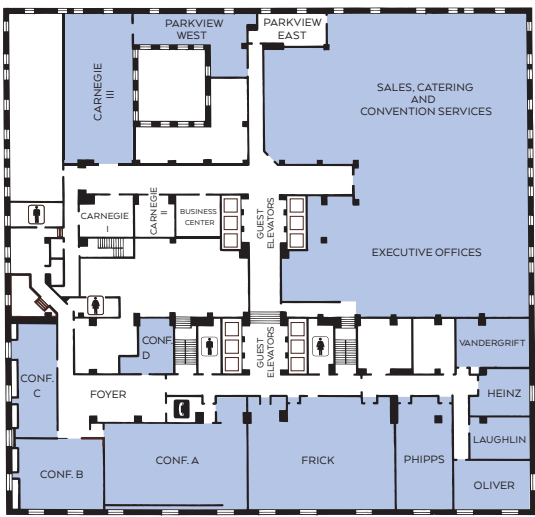


OMNI WILLIAM PENN HOTEL MEETING SPACE

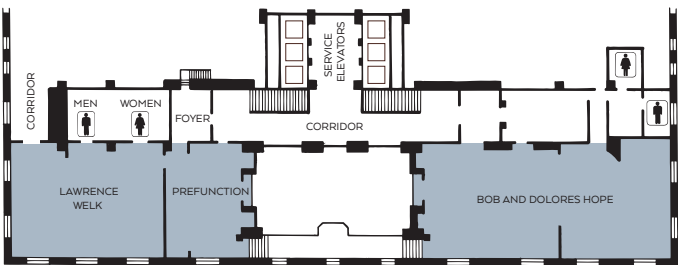
WILLIAM PENN LEVEL



CONFERENCE LEVEL



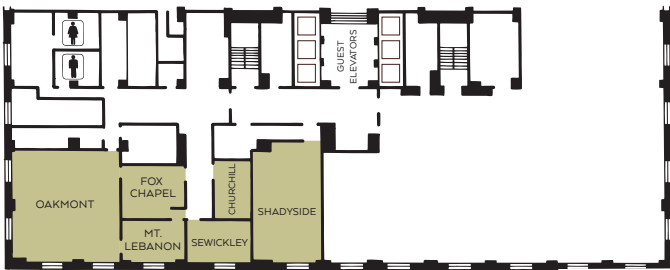
MEZZANINE



SEVENTEENTH FLOOR



FIRST FLOOR





## OMNI WILLIAM PENN HOTEL MEETING ROOM CAPACITY

	FLOOR	SQUARE FOOTAGE	DIMENSIONS L X W	CEILING HEIGHT	PORTABLE WALLS	THEATER	CLASS- ROOM	BANQUET	RECEPTION	HOLLOW SQUARE	U- SHAPE	CONFERENCE
WILLIAM PENN BALLROOM	WP	5,605	124'6" X 34'2"	12'6"	NO	600	308	460	900	80	70	60
THREE RIVERS	WP	3,135	58'6" X 50'8"	9'1"	NO	200	120	200	275	40	34	40
STERNWHEELER	WP	3,160	61'6" X 51'3"	12'	NO	120	65	250	300	30	36	30
RIVERBOAT	WP	2,138	50'9" X 42'	12'8"	NO	120	70	160	220	24	35	30
BOB AND DOLORES HOPE	MEZZ	2,652	78' X 34'	10'4"	NO	180	90	200	284	50	50	60
LAWRENCE WELK	MEZZ	1,751	50'6" X 34'6"	8'8"	NO	190	105	160	200	60	48	38
LAWRENCE WELK FOYER	MEZZ	677	18'3" X 37'0"	9'7"	NO	36	24	30	40	24	18	20
OAKMONT	1	1,046	34'3" X 30'5"	9'	NO	84	50	70	110	40	32	30
FOX CHAPEL	1	374	19'8" X 18'10"	9'	NO	28	15	10	30	10	9	10
CHURCHILL	1	267	17'10" X 14'10"	9'	NO	24	12	10	20	8	9	10
MT. LEBANON	1	241	19'10" X 12'6"	9'	NO	20	12	10	20	8	8	10
SEWICKLEY	1	231	19'10" X 11'6"	9'	NO	16	8	10	20	8	8	10
SHADYSIDE	1	667	34'9" X 19'10"	8'	NO	72	40	60	70	28	25	20
CONFERENCE A	CL	1,839	54'1" X 34'0"	8'6"	NO	192	120	180	240	64	52	42
CONFERENCE B	CL	1,207	35'1" X 34'4"	8'6"	NO	104	63	90	125	44	32	22
CONFERENCE C	CL	704	39'8" X 17'7"	8'6"	NO	56	33	40	50	32	26	24
CONFERENCE D	CL	330	23'1" X 14'3"	8'6"	NO	24	12	20	25	18	15	14
CONFERENCE FOYER	CL	815	44'3" X 18'4"	8'6"	NO	—	—	—	—	—	—	—
FRICK	CL	2,642	59'1" X 44'7"	8'4"	NO	165	112	160	200	60	54	50
PHIPPS	CL	796	34' X 23'4"	9'	NO	70	40	50	60	20	25	26
OLIVER	CL	569	30'6" X 18'6"	9'	NO	41	21	30	40	18	20	22
VANDERGRIFF	CL	494	27'9" X 17'7"	9'	NO	36	21	30	30	16	20	18
LAUGHLIN	CL	413	24' X 17'2"	9'	NO	—	—	—	—	—	—	8
HEINZ	CL	384	20'3" X 18'10"	9'	NO	18	10	10	15	—	—	10
PARKVIEW WEST	CL	407	30'6" X 13'3"	8'10"	NO	—	—	—	—	—	—	12
PARKVIEW WEST FOYER	CL	374	27'10" X 13'4"	8'10"	NO	—	—	—	—	—	—	—
PARKVIEW EAST	CL	399	30' X 13'3"	11'6"	NO	20	14	18	20	—	14	18
CARNEGIE I	CL	291	21'7" X 13'4"	8'	NO	20	12	16	10	—	10	16
CARNEGIE II	CL	285	17'3" X 16'5"	8'	NO	18	12	12	20	—	6	12
CARNEGIE III	CL	881	36'4" X 15'	8'	NO	58	30	50	80	26	22	30
GRAND BALLROOM	17	5,930	114'9" X 50'3"	25'	YES	800	396	530	1,200	120	80	70
BALLROOM W/BALCONY	17	6,705	114'10" X 6'8"	16'	YES	900	—	600	1,300	—	—	—
URBAN	17	3,778	72'8" X 51'9"	25'	YES	400	240	330	400	80	65	50
BALLROOM/URBAN	17	9,708	193' X 50'3"	25'	NO	1,200	640	1,200	1,600	—	—	—
MONONGAHELA	17	2,405	50'10" X 48'	12'1"	NO	230	150	200	230	70	52	40
ALLEGHENY	17	1,449	50'3" X 28'8"	12'5"	NO	158	80	110	150	50	44	38
BEDFORD	17	319	21' X 15'2"	10'8"	NO	30	12	20	20	10	12	14
INDIANA	17	285	21'1" X 13'5"	10'8"	NO	—	—	—	—	—	—	8
GREENE & FRANKLIN	17	617	29'5" X 20'10"	10'8"	YES	50	20	50	50	20	16	20
JEFFERSON	17	294	21' X 14'	11'	NO	—	—	—	—	—	—	8
SKY	17	1,810	44'7" X 40'5"	10'3"	NO	70	32	100	180	—	—	28

Meeting room capacities are determined by the use of the "Arranger & Comfort Calculator," a standardized meeting room capacity measurement system used by Meeting Professionals International. 60" Banquet capacities based on 10 persons per table.



## THE TERRACE ROOM

This award-winning restaurant offers “New Traditional” cuisine with original and creative chef-inspired dishes.

## PALM COURT

The Palm Court serves light snacks, traditional afternoon tea and specialty drinks in an elegantly understated atmosphere.

## THE TAP ROOM

Get a taste of the Steel City and watch your favorite sporting event on plasma TVs while you enjoy appetizers, soups and sandwiches. Try the best chili in the city and an array of local microbrews.

## STARBUCKS COFFEE CAFÉ

For a quick snack or gourmet coffee, stop at Starbucks Coffee Café located in the hotel lobby.

## IN-ROOM GUEST DINING

24-hour dining is available for guests to enjoy delicious cuisine in the privacy of their room.

## SPEAKEASY

The Speakeasy is a cozy and private urban getaway that has been restored to its former historic glory. In true 1920s tradition, Pittsburgh’s only Speakeasy is tucked beneath the hotel lobby.

## DESTINATION PITTSBURGH

The Pittsburgh Metro Rail stops across the street from the hotel, making it easy to commute to the stadium and the ballpark. There’s so much to enjoy, and Omni William Penn Hotel puts you close to everything.

- 4 blocks to the Cultural District
- 7 blocks to Point State Park
- 8 blocks to Heinz History Center
- 1 mile to Andy Warhol Museum
- 1 mile to Rivers Casino
- 1 mile to Heinz Field and PNC Park
- 3 miles to the University of Pittsburgh
- 6 miles to Pittsburgh Zoo & PPG Aquarium
- 18 miles from Pittsburgh International Airport and Allegheny County Airport



WILLIAM PENN HOTEL  
530 WILLIAM PENN PLACE  
PITTSBURGH, PA 15219  
412-281-7100  
OMNIHOTELS.COM/PITTSBURGH