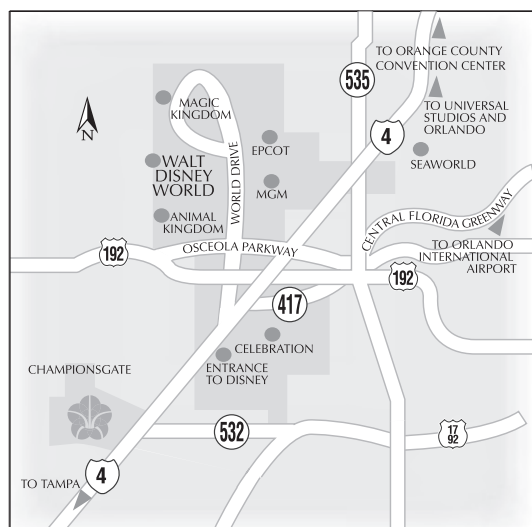


D I S T I N C T I V E
D E T A I L S



DIRECTIONS

From Orlando International Airport: Take South exit to 417 South; Take 417 South and follow the signs to I-4 West; Take I-4 West 3 miles past Disney exits to exit 58; Take exit 58 and bear right to the ChampionsGate main entrance.

CALENDAR FOR A FLAWLESS EVENT

Critical Planning Dates

- Ideally 1 year in advance

 - Convention Services will send an introduction letter & preliminary planning materials.
 - Verify and reconfirm all program requirements including room block, suite requirements, meeting space and golf tee times.
- 9 to 6 months

 - Reservations will send return reservation cards, if applicable. Finalize ground transportation/touring requirements.
- 6 to 3 months

 - Finalize theme party/entertainment requirements.
 - Finalize all recreational requirements.
 - Review exhibit requirements, if applicable.
- 90 to 30 days

 - Discuss menus, meeting specifications, audio/visual requirements and special arrangements.
 - Review cut-off date for room reservations.
- Within 30 days

 - Cut-off date has arrived. Rooming list to be submitted to Reservations. Unused rooms released for general sale. Additional reservations accepted on a space available basis.
 - Confirm names of those receiving complimentary rooms and VIP status.
 - Finalize all menus, meeting setups, audio/visual and floor plans.
 - Finalize engineering/electrical requirements if appropriate.
 - Arrange VIP gifts and amenities.
 - Confirm group restaurant reservations, if required.
 - Review procedures for shipment of meeting materials to the hotel.
 - Confirm group arrival and departure times.
 - Confirm special requirements (pre-registration, early maid service, security, shuttle service, etc.).
- Within 21 days

 - Schedule pre-conference meeting with client (in person or conference call).
 - Confirm banquet orders (both verbal and written).
- Within 72 hours

 - Guarantees for food and beverage functions due prior to noon.
- Arrival/Departure

 - Client arrives at the Omni Orlando Resort at ChampionsGate.
 - Client has pre-conference meeting with the hotel team, who will be responsible to the group.
 - Client has a post-conference meeting with the General Manager and Director of Sales & Marketing to recap the group experience.

NOTES

CONFERENCE SPECIFICATIONS

Lower Level Ballrooms Specifications

Room	Square Feet	Dimensions	Ceiling Height	Windows	Conf Style	U-Shape	Hollow Square	Theater Style	School Room 18" Table	Crescent 72" Rds of 7	Banquet 72" Rds of 10	Reception	Exhibits 8'x10'	Exhibits 10'x10'
LOWER LEVEL FUNCTION ROOMS														
National Ballroom	24,631	215'5" x 114'3"	20'	No	-	-	-	2600	1500	1120	1600	2600	156	125
National A, B, C, D (each)	6,157	53'x114'3"	20'	No	-	-	-	650	400	280	400	650	40	32
National (any two salons)	12,314	106'x114'3"	20'	No	-	-	-	1350	800	560	800	1350	80	64
National (any three salons)	18,471	159'x114'3"	20'	No	-	-	-	2000	950	840	1200	2000	120	96
National Ballroom Pre-function	5,545	-	14'	Yes	-	-	-	-	-	-	-	480	-	-
International Ballroom	19,315	121'4"x159'1"	20'	No	-	-	-	2000	1150	945	1350	2000	121	97
International I, II, III (each room)	6,438	121'4"x53'	20'	No	-	-	-	725	425	315	450	725	41	33
International (any two salons)	12,876	121'4"x106'	20'	No	-	-	-	1375	850	630	900	1375	82	66
International Pre-function	5,456	-	14'	Yes	-	-	-	-	-	-	-	380	-	-
Ballroom Commons (outdoor area)	16,200	Grass/Concrete	-	Outdoors	-	-	-	-	-	-	680	1200	-	-
Wentworth	588	28'x21'	12'	Yes	20	20	24	50	32	21	30	40	-	-
St. Andrews	1,685	31'2"x54'	12'	Yes	36	40	48	140	100	70	100	140	-	-
St. Andrews A, B (each)	842	31'2"x27'	12'	Yes	18	20	24	70	50	35	50	70	-	-
Glen Eagles Boardroom	569	26'7"x21'3"	12'	Yes	Permanent Board Room Table for 12 People									
Royal Dublin	2,111	52'9"x39'9"	12'	No	44	48	56	200	120	91	130	160	-	-
Royal Dublin A, B (each)	1,055	26'4"x39'9"	12'	No	22	24	28	100	60	42	60	80	-	-
Royal Melbourne	2,035	51'x39'9"	12'	No	44	48	56	200	120	91	130	160	-	-
Royal Melbourne A, B (each)	1,017	25'6"x39'9"	12'	No	22	24	28	100	60	42	60	80	-	-
Lower Level Pre-function	2,800	-	-	N/A	-	-	-	-	-	-	-	150	-	-
Golf Course Commons (outdoor area)	30,000	Grass/Concrete	-	Outdoors	-	-	-	-	-	-	1400	2000	-	-
Croc's Beach (outdoor area)	6,500	Sand Beach	-	Outdoors	-	-	-	-	-	-	300	400	-	-

Lobby Level Specifications

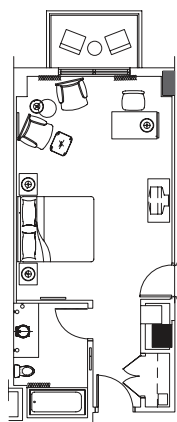
Room	Square Feet	Dimensions	Ceiling Height	Windows	Conf Style	U-Shape	Hollow Square	Theater Style	School Room 18" Table	Crescent 72" Rds of 7	Banquet 72" Rds	Reception	Exhibits 8'x10'	Exhibits 10'x10'
LOBBY LEVEL FUNCTION ROOMS														
ChampionsGate (has outdoor patio)	2,704	52'x52'	14'	Yes	52	60	72	280	152	126	180	200	-	-
Olympic	1,672	44'5"x37'4"	14'	Yes	36	40	48	140	90	70	100	120	-	-
Olympic A, B (each)	836	22'2"x37'4"	14'	Yes	18	20	24	70	45	35	50	60	-	-
Augusta	2,008	54'3x37'4"	14'	Yes	44	48	56	200	120	91	130	160	-	-
Augusta A, B (each)	1,004	26'3.5x37'4"	14'	Yes	22	24	28	100	60	42	60	80	-	-
Legends Executive Boardroom	974	40'1"x24'3"	14'	Yes	Permanent Board Room Table for 18 People									
Oakmont	1,685	31'2"x54'	14'	Yes	36	40	48	140	100	70	100	140	-	-
Oakmont A, B (each)	842	31'2x27'	14'	Yes	18	20	24	70	50	35	50	70	-	-
Riviera	330	15' x 23'	14'	Yes	10	-	-	20	-	-	20	20	-	-
Congressional	2,035	51'x39'9"	14'	No	44	48	56	200	120	91	130	160	-	-
Congressional A, B (each)	1,017	25'6"x39'9"	14'	No	22	24	28	100	60	42	60	80	-	-
Colonial	2,035	51'x39'9"	14'	No	44	48	56	200	120	91	130	160	-	-
Colonial A, B each	1,017	25'6x39'9"	14'	No	22	24	28	100	60	42	60	80	-	-
Lobby Level Pre-function	4,322	-	-	N/A	-	-	-	-	-	-	-	150	-	-

Other Function Space Specifications

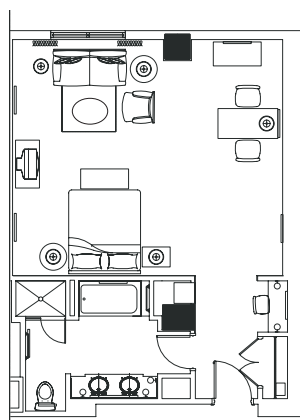
Room	Square Feet	Dimensions	Ceiling Height	Windows	Conf Style	U-Shape	Hollow Square	Theater Style	School Room 18" Table	Crescent 72" Rds of 7	Banquet 72" Rds	Reception	Exhibits 8'x10'	Exhibits 10'x10'
OTHER FUNCTION SPACE														
Pavillion	13,200	120' x 110'	Vaulted 12'-30'	Yes	-	-	-	1200	600	420	600	1000	80	60
2nd. Floor Suites 1-5 (each)	442	17' x 26'	9'	Yes	20	20	24	40	24	-	30	35	-	-

Meeting room capacities are determined by use of the "Arranger & Comfort Calculator," a standardized meeting room capacity measurement system used by Meeting Professionals International. Meeting room capacities do not take into account the space needed for AV setup, staging, food stations or buffets. Schoolroom setup capacities are based on three persons per 6' table and four persons per 8' table.

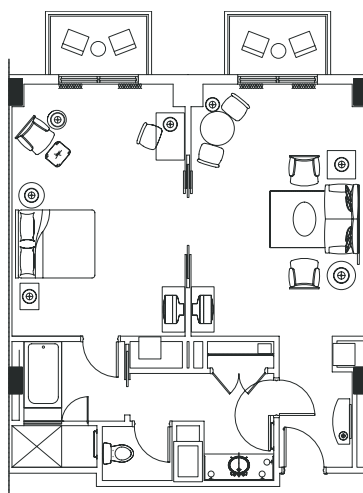
ACCOMMODATIONS



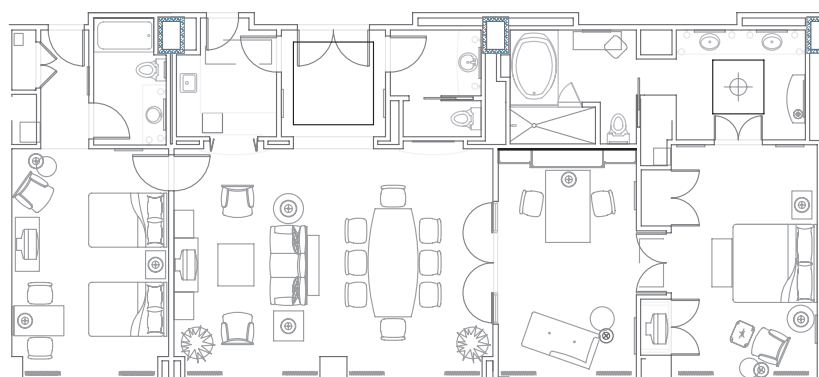
KING



JUNIOR SUITE



HOSPITALITY SUITE



OMNI PRESIDENTIAL SUITE

GUEST ROOMS

Each of our 720 luxurious guest rooms and suites are decorated with over-sized contemporary furnishings and thoughtful touches like triple sheeting, extra pillows and plush bathrobes. Every modern convenience is at hand, such as a large executive work desk with modem outlet and dataports, two telephones with dual phone lines and speaker options, including one cordless phone and voicemail, and in-room high-speed wireless Internet access. With all of these modern conveniences and magnificent views of the golf courses and acres of natural beauty right outside your window, your attendees will be glad you chose the Omni Orlando Resort at ChampionsGate.

SUITES

Our spacious suites provide guests with a tremendous amount of extra living space, and special features such as an over-sized tub and a large living area. Select suites have a private balcony. Our Junior Suite features a living area, a large work space with dual phone lines, an over-sized vanity area and a fully stocked refreshment center. Our Omni Suites are found in 2-bay and 3-bay floor plans with a large living area, an over-sized sofa, over-stuffed chairs and views of the golf courses and acres of natural beauty.

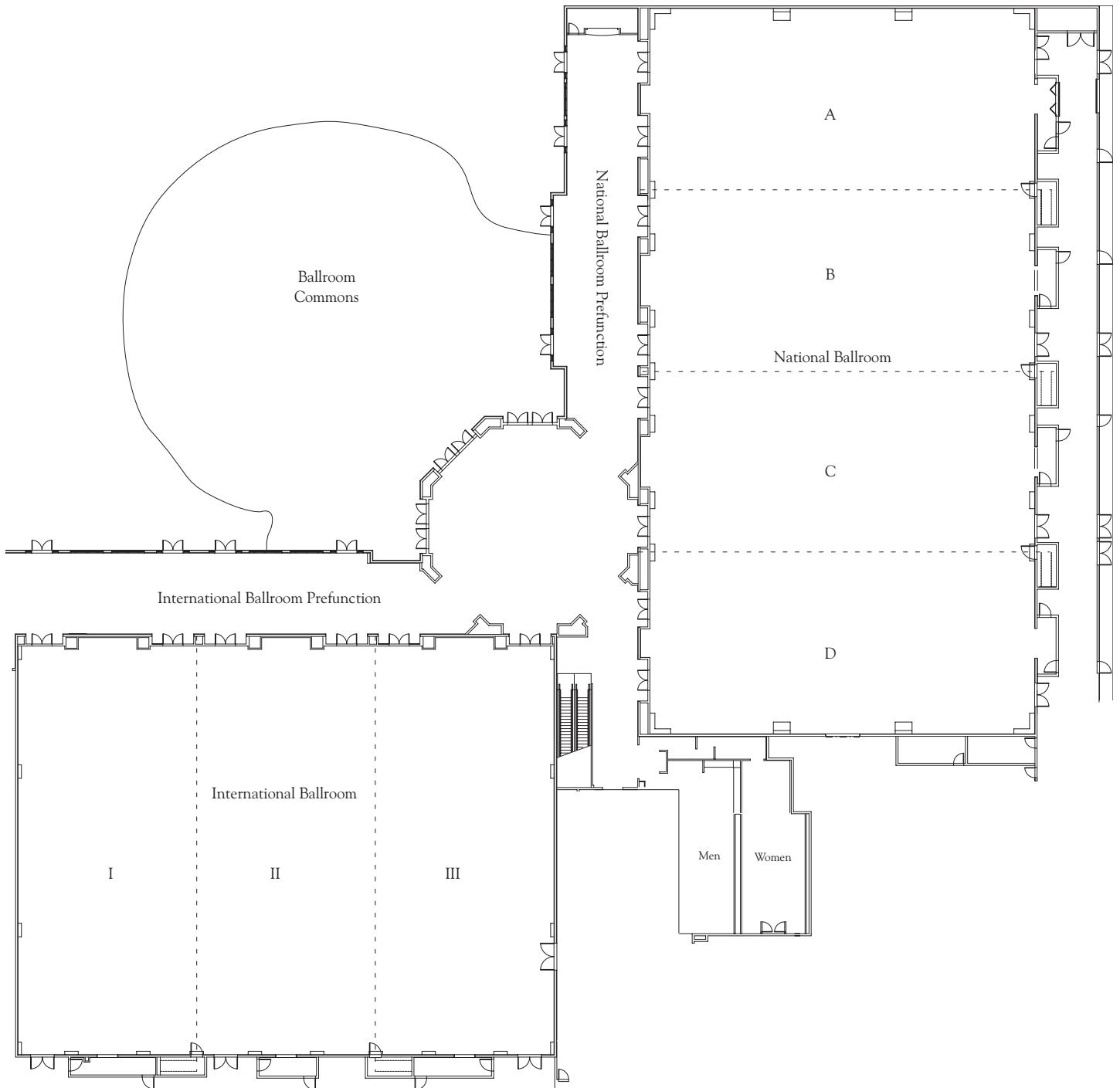
GUEST ROOM INVENTORY

Room Category	Number	Square Feet	Special Features
Double/Double	411	406	Beautifully appointed guest rooms with comfortable furnishings, two double beds and scenic views of the golf courses or acres of natural beauty.
King	274	406	Modern-style guest rooms featuring plush king-size beds and an over-sized lounge chair with ottoman. Some guest rooms have balconies.
Executive Suite	6	2 bay = 865	Spacious two- and three-bay guest rooms with a large living room area, an over-sized sofa and chairs. Select suites have balconies.
Florida Suite	5	3 bay = 1,200	
Junior Suite	11	655	One-bedroom suite with a king-size bed, a separate vanity area and an over-sized bath.
Hospitality Suite	8	865	One-bedroom deluxe suite with large living room, sleeper sofa, dining room table and over-sized bath.
Omni Presidential Suite	2	2,100	The Omni Presidential Suite offers tremendous space with a full kitchenette, separate dining area, sitting room and Jacuzzi
Parlor	3	406	Connects to a king-bedded room for a large living room area. Parlors are furnished with a sofa bed.

All guest rooms are equipped with a fully stocked refreshment center, iron and full-size ironing board, hair dryer, coffee maker, bathrobes, in-room safe, an executive work desk, two telephones with dual phone lines (includes one cordless telephone), speaker options, voice mail and modem, high-speed wireless Internet access and on-demand hit movies.

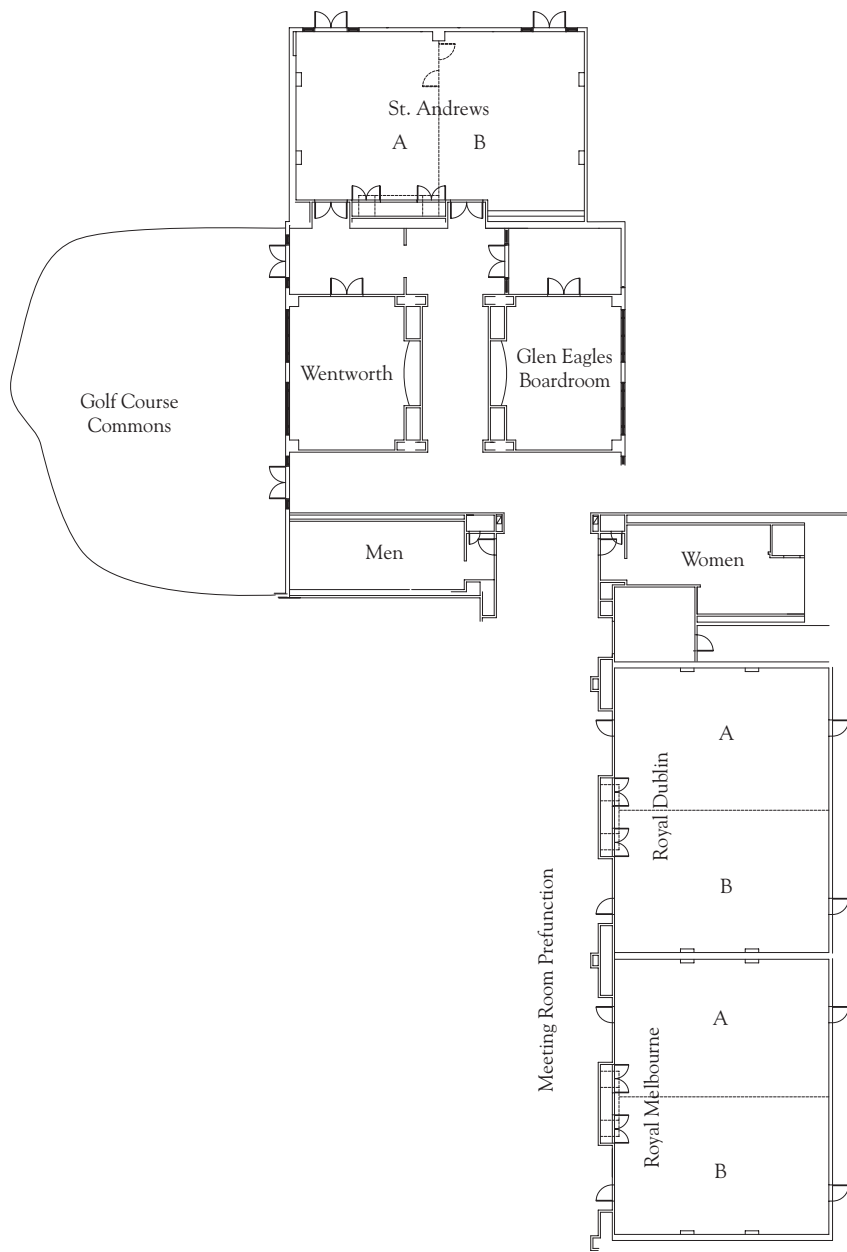
CONFERENCE SPECIFICATIONS

Lower Level Ballroom

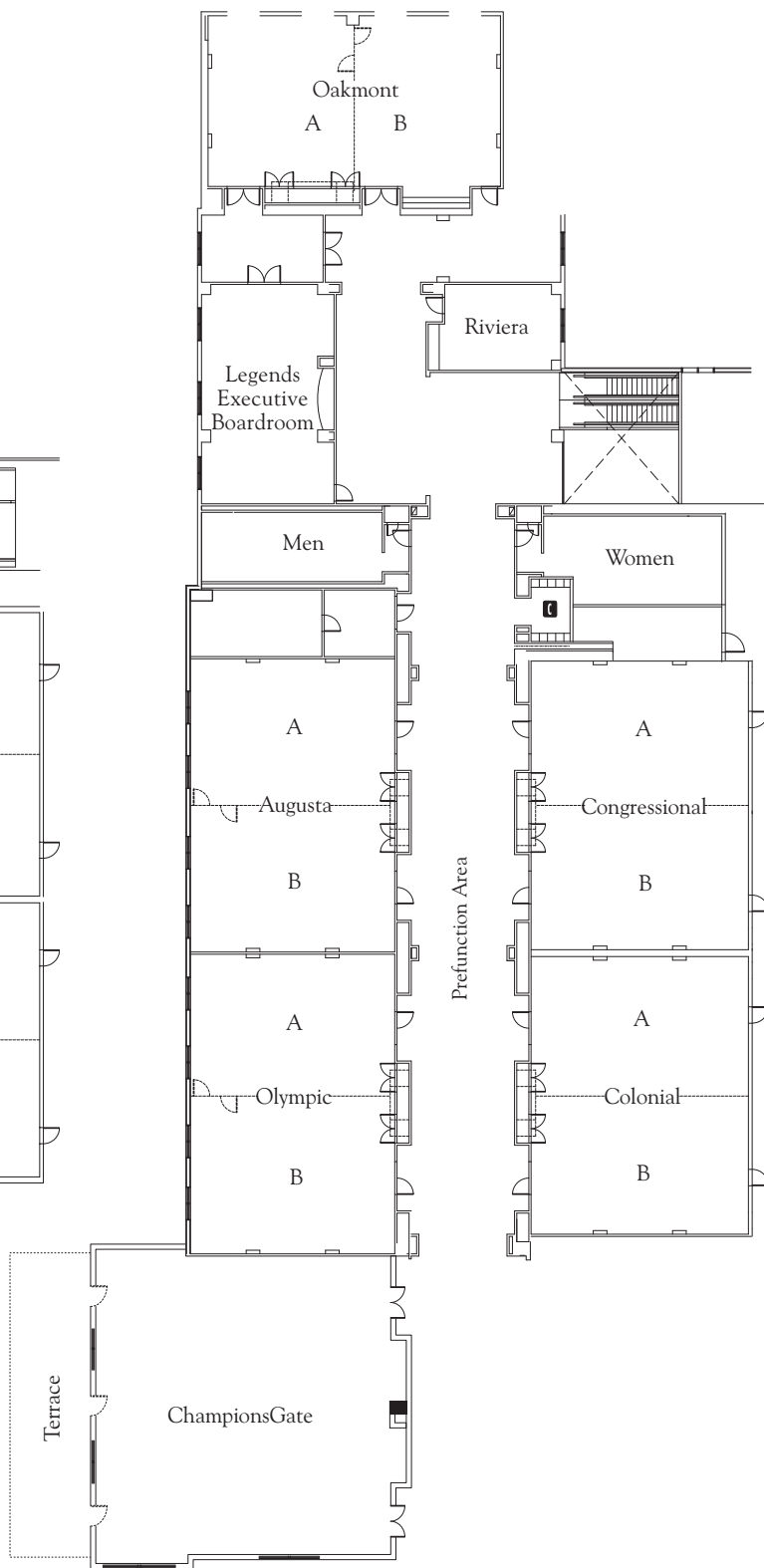


CONFERENCE SPECIFICATIONS

Lower Level



Lobby Level



DESTINATIONS

Surrounded by 1,200 acres of well-preserved wetlands, and two world-class ChampionsGate golf courses designed by internationally renowned golfer Greg Norman, this four-diamond resort has become one of the nation's premier golf and meeting retreats.

In addition to superb golf and the David Leadbetter Golf Academy, guests of the resort will enjoy a European-style spa, 15-acres of recreation and a variety of enticing restaurants. ChampionsGate is a luxury retreat, located within 25 minutes of the Orlando International Airport, and close enough to Orlando's most famous attractions, without all the distractions.

LOCATION

- Centrally located within the prestigious 1,200-acre master-planned community of ChampionsGate
- Just off Interstate 4 at exit 58
- Approximately 25 miles/25 minutes from Orlando International Airport
- Approximately 62 miles/62 minutes from Tampa International Airport

ATTRACTIONS

- 5 miles to the entrance of Walt Disney World Magic Kingdom® - Disney classics come to life in this wonderful storybook fantasyland. Awesome fireworks are performed on special nights and are synchronized to classic Disney tunes, bursting above in a spectacular display of color. Shuttle transportation is provided to all four Disney theme parks including:
 - Disney's Animal Kingdom® - Take a magical journey through a world of animals both real and fantasy.
 - Epcot® - Touch the future and travel the world with an amazing array of attractions and live performances.
 - Disney MGM Studios - Step into the bright lights of show business as you visit inside the movies, meet the characters or see live performances throughout the day and night.
- 14 miles to SeaWorld Orlando, a spectacular marine adventure park with 200 acres of world-class shows, thrilling rides and unforgettable animal encounters.
- 15 miles to Blizzard Beach – The Florida sun meets the alpine snow in the coolest water park around.
- 15 miles to Typhoon Lagoon – Families can dive into an exotic tropical paradise and escape to high waves of excitement and cool relaxing fun.
- 15 miles to the Orange County Convention Center.
- 16 miles to Universal Studios Florida – a behind-the-scenes adventure into the movies.
- 22 miles to the Mall at Millenia, filled with a variety of boutiques, galleries and restaurants.
- 24 miles to downtown Orlando.
- 66 miles to Busch Gardens, a unique blend of thrilling rides, one of the country's premier zoos featuring more than 2,700 animals, live shows, restaurants, shops and games providing excitement for guests of all ages.
- 70 miles to the Kennedy Space Center Visitor Complex. "Early Space Exploration, Exploration of the New Millennium" is a showcase of the next 1,000 years in space exploration, space center tours, Apollo/Saturn V Center and IMAX films.

TRANSPORTATION

- Taxi and shuttle service is available to and from Orlando International Airport.
- Shuttle service is provided to all four Walt Disney World® theme parks as well as Downtown Disney® Pleasure Island, Disney's nighttime entertainment complex.
- Arrangements for car rentals and shuttle transportation can be made at the on-site transportation desk.

TEMPERATURE

One of Orlando's biggest attractions is its year-round mild weather. Central Florida's subtropic climate attracts visitors to the area.

ORLANDO AVERAGE TEMPERATURE

Month	High	Low
January	70.8	48.6
February	72.7	49.7
March	78.0	55.2
April	83.0	59.4
May	87.8	65.9
June	90.5	71.8
July	91.5	73.1
August	91.5	73.4
September	89.7	72.4
October	84.6	65.8
November	78.5	57.5
December	72.9	51.3

GUEST SERVICES

GUEST SERVICES

- Concierge service
- Attraction tickets and transportation
- Shoeshine services
- Complimentary *USA Today* delivered to your room each morning
- Dry cleaning/laundry service
- Retail gallery and video arcade
- Full-service beauty salon
- Gift shop
- ADA compliant guest rooms are available upon request
- Pets under 25 lbs. allowed (\$50 non-refundable fee)
- Express check-in and check-out
- Childcare services can be arranged through the Concierge

In-Room Technology

- LodgeNet system featuring on-demand hit movies and Nintendo® 64 video games
- WebTV
- Executive work desk with modem outlet and dataports
- Two telephones with dual phone lines, speaker options and voice mail (includes one cordless phone)
- High-speed wireless Internet access

In-Room Amenities

- Fully stocked refreshment center with a wide variety of snacks and beverages
- In-room safe
- Daily housekeeping and evening turndown service upon request

- Bathrobes
- Coffee maker
- Hair dryer
- Iron and ironing board
- Foam and feather pillows
- Triple sheeting on beds
- Down pillows also available

OMNI SENSATIONAL KIDS PROGRAM

Amenities for the Omni Sensational Kids® Program include:

- Kids camp
- Interactive, colorful Web pages designed just for Omni Kids at omnikidsrule.com
- A list of the top family attractions located near the resort
- Resort can provide outlet covers and a kids' first-aid kit for their security and safety
- Complimentary backpack-style bag with kid-friendly sensory items presented at check-in.
- Activity book and bright crayons
- Colorful kid's cup to use for unlimited refills throughout their stay
- Kid-themed menu in Trevi's restaurant
- Nighttime children's snack

VIP GIFTS

Our staff is well versed in the selection of amenities for VIP guests and would be happy to make customized arrangements prior to the arrival of your guest. You may also purchase an Omni Hotels Gift Certificate, a luxurious gift for those who appreciate first-class service. For more information, please contact the Concierge.

BUSINESS CENTER

Services are available seven days a week. Services include:

- Photocopying
- Fax
- Printing
- High-Speed Wireless Internet Access
- Audio/Visual Equipment and Services
- Notary Public
- Secretarial
- Mail and Postage
- 24-hour automated services

GOLF

The ChampionsGate Golf Club provides guests with an experience that is rewarding for both amateur and professional golfers. Whether you choose the International course with its authentic links-style golf, reminiscent of the great courses of the British Isles, or the National course with its traditional American style, it's a golfer's paradise. Both courses are available for play year-round.

- Two 18-hole championship courses designed by international golf champion Greg Norman. These courses blend traditional and modern elements to create a unique golf experience.
- ChampionsGate Golf Course was honorably mentioned in *Golf Magazine's* "10 Most Distinctive Places to Play" and is also well known for its two significantly different courses.
- Courses feature long fairways, fast and narrow, flanked by dunes and roughs creating a challenging round of golf.

FOOD & BEVERAGE

RESTAURANTS: HOURS OF OPERATION

Restaurant	Breakfast	Lunch	Dinner
Zen			6 p.m. - 10 p.m.
Trevi's	6:30 a.m. - 2 p.m.		Monday - Saturday 5 p.m. - 10 p.m.
Lobby Lounge			Opens 5 p.m.
Broadway Deli		10:30 a.m. - 9 p.m.	
David's Club			Opens 4 p.m. daily
Croc's		11 a.m. - 8 p.m., weather permitting	
Piper's Grille Restaurant		6 a.m. - 4 p.m.	

Zen

Taking its cue from a menu that features pan-Asian dishes, Zen combines elements of Asian design to create a relaxing atmosphere. Discover a quaint sushi and saki bar perfect for small gatherings of up to 15 people. Asian-themed privacy screens located throughout the restaurant create separate dining areas. Seats 223

Trevi's

The elements of a traditional Italian garden have been translated into a new lively space that delights the senses in this three-meal restaurant. The aromas of Italian dishes greet you upon arrival and invite you to sample the sumptuous cuisine prepared in our magnificent kitchen. The chef's table provides a family-style atmosphere, inviting guests to watch as a succulent meal is prepared. Outdoor seating showcases the restaurant's herb garden, featuring herbs and spices that are used by the chefs to create an extraordinary meal. Guests can stroll through the garden's carefully planned paths and experience the fresh ingredients used in preparing the culinary creations. Seats 300

Lobby Lounge

The perfect place to gather with friends or business associates for a before- or after-dinner cocktail in a warm atmosphere featuring live entertainment. Seats 96

Broadway Deli

Our gourmet deli offers a wide array of snacks and refreshments whether you are on the way to the first tee or any of the other relaxing activities at the resort. Seats 32

David's Club

Meet friends, family or associates in a casual setting at our sports bar and grill overlooking two championship golf courses and pools. Plasma-screen TVs integrated into the back bar keep guests up to date on golf and other premier sporting events. Overstuffed leather chairs are arranged throughout the space to allow guests to sit comfortably and enjoy relaxed conversation. Play a quick game of pool, foosball or electronic darts while you sip a cold beverage, or be seated in the dining room where you will delight in mouth-watering steaks and fabulous views. Seats 245

Croc's

Sit by sparkling blue waters as you sample delicious menu items at the poolside bar and grill. Seats 66

Piper's Grille Restaurant

Located in the ChampionsGate Clubhouse. Experience a unique menu from healthy salads and hearty sandwiches to a variety of Florida and Caribbean inspired dishes. Seats 80

Guest Room Dining

24-hour guest room dining is available if you choose to experience delicious cuisine in the privacy of your guest room.

CONFERENCE SPECIFICATIONS

CONFERENCE AND BANQUET

- 70,000 square feet of meeting space. Each venue offers state-of-the-art audio/visual equipment including modem, fax and T-1 connectivity and high-speed Internet access.
- 25,000 square-foot National Ballroom with 20-foot ceiling
- 20,000 square-foot International Ballroom with 20-foot ceiling
- Two separate 5,500 square-foot ballroom pre-function areas
- A variety of ample outdoor function space is available for your event
- Twenty-seven meeting rooms
- Two executive boardrooms

Music, Entertainment and Events

Our conference planning managers and a variety of resort partners are here to enhance your meeting program and assist with everything from music to elaborate themed events.

TECHNICAL ASSISTANCE

Our on-site technicians are always available to provide the most current audio/visual equipment, services and technical support for your function.

Electrical Outlets

Electrical outlets are conveniently located throughout the function space. All rooms are equipped with a modem/fax hook-up. Voltage capacity meets standards.

Shipping and Receiving

Arrangements are available through our full-service shipping and receiving department. To ensure proper delivery and handling of your packages, please label packages clearly. Due to limited storage space, we request that packages not arrive more than one week prior to your event.

Receiving Docks

Our conference planning managers can assist in providing special arrangements for delivery of your meeting materials.

Post-Conference Shipping

Our conference planning managers can arrange for your shipping needs after your conference concludes.

Maintenance

Our engineering department is available 24 hours to provide general technical, mechanical and equipment repair assistance.

Parking

On-site valet and self-parking available.

GUEST SERVICES

GOLF (CONT'D)

- An experienced tournament staff is available to plan, coordinate and execute outstanding events, including a variety of popular tournament formats.
- Enhance your golf game by using the Callaway practice facility, which consists of an expansive practice area, putting green and short game area.
- Brush up on your skills at the world headquarters of the David Leadbetter Golf Academy, where some of the top tour professionals hone their game. Their elite, professional golf instructors are available for private lessons and group clinics.

Clubhouse

The expansive veranda at the ChampionsGate Clubhouse provides an extraordinary view of the many acres of well-preserved wetlands and both golf courses. At the Clubhouse restaurant, Piper's Grille, guests will experience a unique menu of everything from healthy salads and hearty sandwiches to an assorted variety of dinner delights.

Golf Pro Shop

Located in the Clubhouse, the ChampionsGate Golf Shop has a wide variety of apparel and accessories for both men and women. You will find brand names such as Cutter & Buck, Bobby Jones, Byron Nelson, Greg Norman, Sport Haley and Tommy Bahama available for purchase.

SPA

For groups who want to incorporate spa services during their stay, our spa offers unparalleled luxury with European sensibility. Here your travelers can select from an impressive array of treatments to refresh and rejuvenate mind, body and spirit. The Spa offers complete retreat packages and a choice of a la carte services ranging from chair massages during meeting breaks, to complete facials, body treatments, wraps, masks and salon services. Your attendees will enjoy the highest levels of personalized attention, comfortable and inviting lounges to relax in, plush robes, herbal teas and fresh fruit. Guests may retreat to a private whirlpool or unwind in the sauna before or after their service.

FITNESS

The Omni Orlando Resort at ChampionsGate features a state-of-the-art fitness center, fully equipped with the latest in cardiovascular and weight-training equipment. After a strenuous workout, refresh yourself with a soothing massage or enjoy a dip in our outdoor heated pool with private cabanas, activity pool or lazy river.

- Full-service health club featuring cardiovascular and Cybex weight-training equipment.
- The Get Fit Kit allows guests to work out in the privacy of their own room. This kit includes a floor mat, a pair of free weights, mini portable radio with earphones, elastic stretch bands and an informative exercise booklet. Contact the Front Desk for a Get Fit Kit to use during your stay.
- For a more intense workout, reserve a Get Fit Guest Room. This room features a portable treadmill, sports drinks and energy bars in the refreshment center, and a Get Fit Kit available to use during your stay. Reserve your Get Fit Guest Room when you make your reservation, or contact the Front Desk and they will gladly deliver a treadmill and Get Fit Kit to your room. (Subject to availability.)
- Formal heated outdoor pool, family activity pool with water slides and an 850-foot lazy river, and sand volleyball, basketball and tennis courts
- Jogging, hiking and biking paths located nearby. Jogging maps are available through the Concierge.
- Golfers at all levels will enjoy Champions 9, the resort's lighted 9-hole, par 3 golf course.