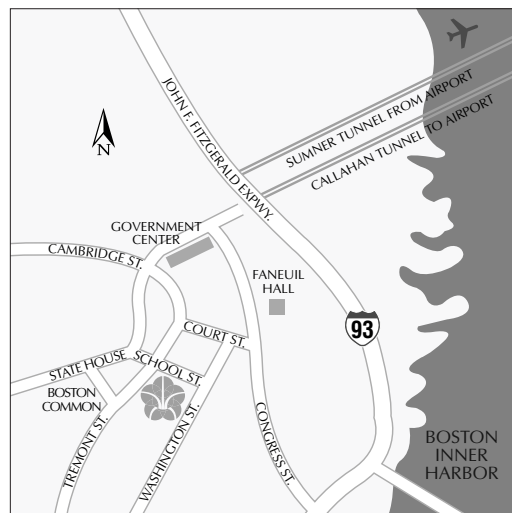


DISTINCTIVE DETAILS



DIRECTIONS

From Logan International Airport: Follow signs for Sumner Tunnel/Boston; Leaving tunnel stay to right and follow signs for Government Center; Road leads into New Chardon Street; At 2nd light turn left onto Cambridge Street; At 3rd light turn left onto School Street: Hotel is located on the right.

DESTINATIONS

Located on the Freedom Trail in the heart of Boston, the Omni Parker House is rich in tradition and unparalleled in service. The longest continuously operating hotel in the United States, this beloved Boston institution has hosted world luminaries from poets to philosophers to presidents since 1856. Blending past and present in an unforgettable experience, the Omni Parker House is a hotel like no other.

LOCATION

- Centrally located in the heart of the Financial District along the Freedom Trail, a three-mile walking route which covers 16 historical sites.
- 2.5 miles, 15 minutes from Logan International Airport
- 1 block to subway Green, Blue, Orange and Red (T) lines
- The beginning stop on the New England Literary Trail. The hotel was once home to the "Saturday Club" whose members and guests included Holmes, Longfellow, Emerson, Thoreau, Dickens and more.
- Walking distance to a variety of shopping experiences including Newbury Street.
- Central to the Hynes Convention Center, World Trade Center and the State House.
- Convenient to Interstates 93, 95 & 90

ATTRACTIONS

- 1 block to Downtown Crossing, home of the original Filene's Basement store as well as many other stores unique to Boston.
- 1 block to Boston Common and the Public Gardens where you will find ice skating during the winter months or lush grounds in the spring and summer. Be sure to take a ride on the swan boats, which float on the lagoon in the center of the Gardens. At the Charles Street entrance to the Gardens you will discover duckling statues, commemorating the famous ducks in Robert McCloskey's 1952 children's book, "Make Way for Ducklings."
- 3 blocks to Faneuil Hall/Quincy Marketplace. This historic area houses a long food court featuring a variety of local and international cuisine. The surrounding market contains unique Boston stores as well as franchises.
- A stroll across Boston Common and the Public Gardens brings you to Boston's Theater District, home to a spectacular array of new and classic entertainment.
- Restaurants and clubs line the streets of downtown Boston. To the west across Boston Common be sure to visit "Cheers" and the "Bull and Finch Pub" made famous by the NBC sitcom. To the south across the Public Gardens is "The Alley" known to be Boston's version of Bourbon Street. To the east is Chinatown, home to some of the finest ethnic cuisine. No matter what your taste, you will find specialty restaurants featuring everything from seafood to French cuisine just outside your door.
- The New England Aquarium, located across Quincy Market, is home to more than 7,000 fish and aquatic mammals. Featuring a 187,000 gallon tank containing sharks, stingrays, giant turtles, and more. Sea lion and dolphin shows every 90 minutes. Daily whale watches from May - October.
- The Museum of Science, just three stops away on the Green Line subway, houses more than 400 exhibits and is home to the Computer Museum. This facility also houses the Mugar Omni Theater, featuring current IMAX films.
- Fenway Park, easily accessed via the Green Line subway, is home to the Boston Red Sox. This 87-year old structure is the oldest park in baseball. The Red Sox play 81 games each season at Fenway, but since the ballpark's capacity of 33,871 is the smallest in all of baseball, be sure to order tickets in advance.
- The Fleet Center, two stops away via the Green line, is home to the Boston Bruins and the Boston Celtics. The Fleet Center also hosts many other specialty events throughout the year.

TEMPERATURE

- Winter temperatures hover around freezing to just below freezing while springtime is just right for shirt sleeves or light jackets. Summers are warm with gentle evening breezes.

BOSTON WEATHER

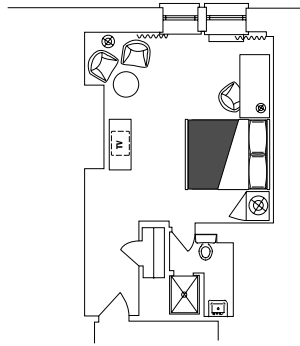
Month	High	Low	Month	High	Low
January	36	23	July	82	65
February	40	25	August	80	65
March	45	31	September	76	60
April	50	40	October	65	50
May	67	50	November	52	40
June	76	60	December	40	27

TRANSPORTATION

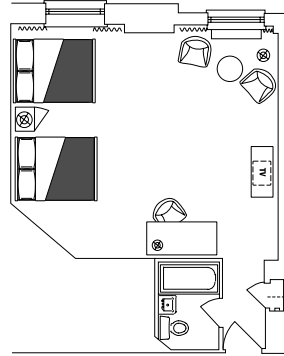
- Logan International Airport is just 2.5 miles from the Omni Parker House.
- 1 block away, the Massachusetts Bay Transportation Authority (MBTA) Subway (Blue line) to Airport station is one of the fastest ways to the airport from downtown. Free shuttle buses connect the subway station with all airline terminals.
- One-half mile from the hotel, Amtrak provides national service from South Station and Back Bay Station.
- The MBTA operates subways, trolleys, buses, and commuter train lines between 5 a.m. and 12:50 a.m. MBTA schedules are available at the concierge desk.
- Boston is well-served by ground transportation companies that provide service throughout the city.
- The hotel's concierge can arrange car rental, limousine and luxury car service.

ACCOMMODATIONS

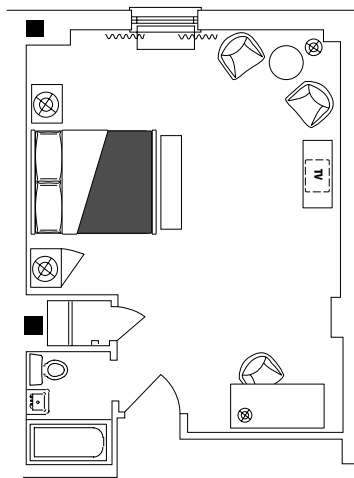
Due to the historic nature of the Omni Parker House, the hotel features more than 50 different guest room configurations. As the longest continually operating hotel in America since 1856, each time you stay with us you become a part of our unique history.



EUROPEAN



DELUXE DOUBLE



KING/QUEEN

GUEST ROOMS

History and tradition describe our 551 recently restored guest rooms. Each room features the beautiful décor of custom cherrywood furnishings with richly colored fabrics. All rooms include a private bath, hair dryer, iron and ironing board, in-room movie selections, voice mail and two-line phones with dataports. All rooms (excluding economy) also include a work desk and fully stocked refreshment center.

SUITES

Each one bedroom suite is individually decorated in the theme of an historic Boston figure. All suites feature a king- or queen-size bed and include a separate, traditionally-appointed living room with pull-out sofa, armchair, large work space and fully stocked refreshment center. Additional amenities include; private bath, hair dryer, iron and ironing board, in-room movie selections, voice mail and two-line phones with dataports.

GUEST ROOM INVENTORY

Room Category	Number	Special Features
European	166	One full-size double bed, executive work desk and fully stocked refreshment center
Deluxe	156	Larger room with king- or queen-size bed, separate work desk area
Traditional	147	Two double beds
Superior	40	Oversize room with a living room, alcove area with work desk and a pull-out queen-size sofa
Economy Single	21	One full-size double bed
One Bedroom Suite	20	Individually decorated honoring an historic Boston figure, formal living room with a pull-out sofa
Harvey Parker	1	Jacuzzi tub, formal dining room and wet bar

All guest rooms are equipped with an iron, full-size ironing board, terry cloth bathrobe, easy chair, hair dryer, voice mail, two-line phone, high-speed Internet access at a flat rate and most with a fully stocked refreshment center. All rooms feature historic Boston decor with custom cherry furnishings, richly colored fabric, and 19th century reproduction artwork.

GUEST SERVICES

GUEST SERVICES

- Professional concierge staff
- Daily housekeeping service
- Gift shop
- Same day dry cleaning service available through concierge seven days a week.
- 24-hour guest room dining
- Valet parking
- Foreign currency exchange
- Safety deposit boxes
- Express check-in and check-out via video or telephone
- Special requests gladly accommodated

In-Room Amenities:

- LodgeNet system featuring on-demand hit movies and Nintendo® 64 video games.
- Complimentary *USA Today* delivered to your room each morning
- Dual phone lines with dataports
- Voice mail service
- High-speed Internet access at a flat rate
- Fully stocked refreshment center in most rooms
- Evening turndown service for all VIPs and Select Guest Members; others upon request
- Hair dryer
- Iron and full-size ironing board
- One plush terry bathrobe available in each guest room; two in the suites
- Triple sheeting on bed
- Extra pillow and blanket provided with an additional feather pillow on the bed.

VIP GIFTS

Our staff is well versed in the selection of special amenities for VIP guests and would be happy to make customized arrangements prior to your guest's arrival. You may also purchase an Omni Hotels gift certificate, a luxurious gift for those who appreciate first-class service. For more information contact the front desk.

OMNI KIDS PROGRAM

Amenities for the Omni Kids Program include:

- Interactive, colorful Web pages designed just for Omni Kids at www.omnihotels.com
- A list of the top family attractions located near the hotel
- Omni Hotels can provide outlet covers and a kids' first aid kit for their security and safety
- Rolling backpack available for kids to take to their room, filled with fun puzzles, games and books to read at bedtime
- Jumbo activity book and bright crayons
- Colorful kid's cup with unlimited refills to use throughout their stay
- Kid-themed menu in the restaurants
- Nighttime children's snack

BUSINESS CENTER

Most services are available during regular business hours through the concierge desk and executive offices, Monday through Friday:

- Secretarial services
- Mail and postage services
- Photocopying
- Fax machines
- Notary Public
- Audio/visual equipment and services
- Internet access

RECREATION

- Jogging and biking trails are located around the hotel. Jogging maps are available upon request.
- Fully equipped fitness center with exercise bicycles, StairMasters, treadmills, Nautilus weight equipment and free weights

OFF-SITE RECREATION

- The Metropolitan District Commission (MDC) operates more than 16 miles of beaches, all accessible by public transportation. Beaches are open from the end of June until Labor Day, with lifeguards on duty from 10 a.m. to 6 p.m.
- 7 additional MDC saltwater beaches are within 10 miles of Boston
- Charles River Bike Path, a 17.7 mile circuit between Science Park and Watertown Square, passes through Boston, Cambridge, Newton and Watertown on both sides of the Charles River.
- Boating is available through the MDC and the City of Boston sailing programs. MDC offers instruction for both children and adults. Boston Sailing Center (open year round) on Boston Harbor and Community Boating (open April - October) on the Charles River are both within a few blocks of the hotel. Contact the concierge for further information.
- The Boston Marathon, the oldest marathon in the world, is run each year on the third Monday in April. The Marathon has more than 15,000 participants, 4,000 volunteers and 1.5 million spectators. Pack a picnic lunch, bring a portable radio and enjoy a spot along the route.
- Championship golf courses
- Ice skating on Boston Common (seasonal)

FOOD & BEVERAGE

RESTAURANTS: HOURS OF OPERATION

Restaurant	Breakfast	Lunch	Dinner
Parker's	6:30 a.m. to 11:30 a.m. (M-F) 7:00 a.m. to 12:00 p.m. (Sa-Su)	11:30 a.m. to 2:30 p.m. (M-F)	5:30 p.m. to 10:00 p.m. (M-Sa)
Parker's Bar		11:30 a.m. to 2:30 p.m. (M-F) 12:00 p.m. to 2:30 p.m. (Sa-Su)	2:30 p.m. to 10:30 p.m. (M-Su)
Cocktails			11:30 a.m. to 12:00 a.m. (M-F) 12:00 p.m. to 12:00 a.m. (Sa-Su)
The Last Hurrah Cigars, Cocktails and Light Menu		11:30 a.m. to 1:00 a.m. (M-Sa)	

Parker's

Nostalgic cuisine with a contemporary flair. The rich culinary heritage lives on at the birthplace of the Boston Cream Pie, the Parker House Roll and Boston Scrod. Parker's serves breakfast, offering an elaborate buffet in addition to à la carte selections, lunch and dinner.

Parker's Bar

Relax by the fireplace as you enjoy selections from an extensive offering of fine wines, specialty scotches and light fare menu options.

The Last Hurrah

A popular meeting place for the city's political, business and social communities, The Last Hurrah offers a variety of salads, sandwiches, and of course, New England Clam "Chowda." However, the biggest draw may be our "personal" martini presentation, shaken or stirred tableside, or the specialty drinks such as the liquid Boston Cream Pie.

Guest Room Dining

Enjoy gourmet cuisine 24 hours a day in the privacy of your guest room.

CONFERENCE SPECIFICATIONS

CONFERENCE AND BANQUET FACILITIES

- More than 23,000 square feet of meeting and banquet space, including 18 function rooms.
- The Rooftop Ballroom offers more than 3,500 square feet of space with an additional 585 square feet of prefunction area featuring a gracefully arched ceiling, crystal chandeliers, and spectacular panoramic views of Boston. The room accommodates up to 500 guests for receptions, 33 for banquets, and 240 classroom style.
- The historic Press Room has 1,980 square feet of function space. Decorated in rich mahogany wood with a fireplace at one end of the room. This room can accommodate up to 211 guests for receptions and 168 for banquets.
- Sixteen additional conference rooms are available (some with connecting walls) for groups of 10-210.

Music and Entertainment

- Our conference planning managers are available to assist in booking music and/or entertainment for your event.

TECHNICAL ASSISTANCE

- State-of-the-art audio/visual equipment is available through the Catering and Conference planning department at a nominal fee. Convenient daily packages available.
- On-site audio/visual experts are available to assist you.
- The hotel offers a full range of staging equipment and specializes in sound reinforcement, large screen video, and data projection as well as stage lighting.

Electrical Outlets

- Electrical outlets (120 volts) are located in all guest rooms and function rooms.
- All rooms are equipped with a modem/fax hookup.
- DSL and T1 lines are available for Internet presentations (fee).
- The Alcott Ballroom features (1) 60-amp, 3-phase, 4-wire receptacle, and (1) 30-amp, 3-phase, 4-wire receptacle.

Shipping and Receiving

- Shipping and receiving arrangements are available through our sales department or at the front desk.
- Your personal conference planning manager can assist in providing special arrangements for the delivery of your meeting materials. Limited storage available for a nominal fee.
- Your conference planning manager can ensure your meeting materials are shipped according to your instructions once your event has been concluded.

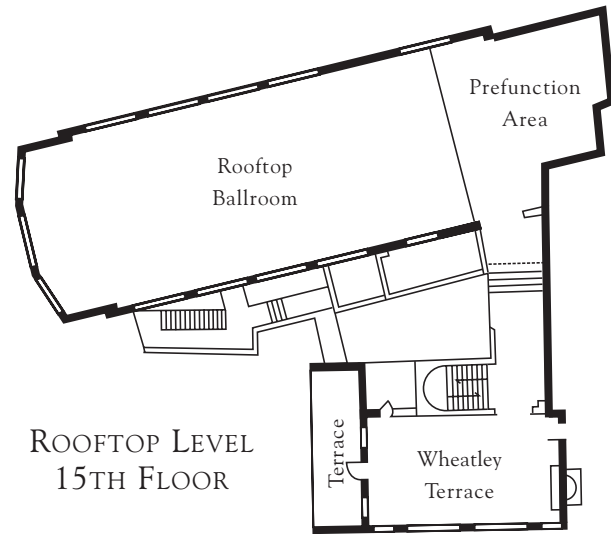
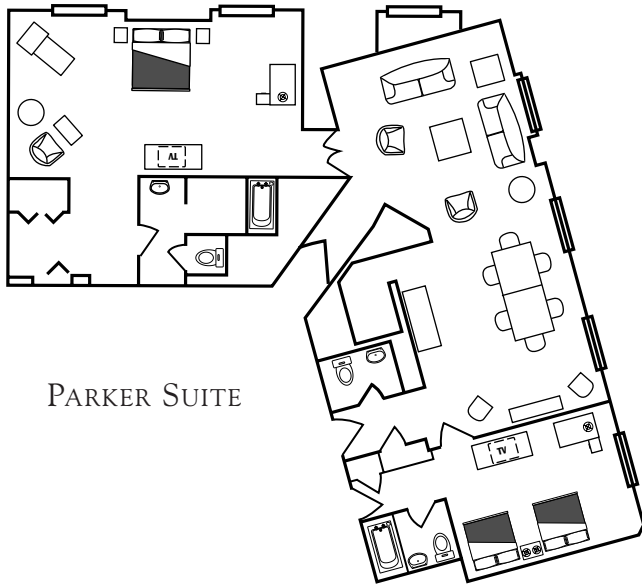
Maintenance

- Our engineering department is available 24-hours to provide general equipment repair assistance.

Parking

- Valet parking is available (fee).
- Self parking is available at a variety of parking garages within one block of the hotel.

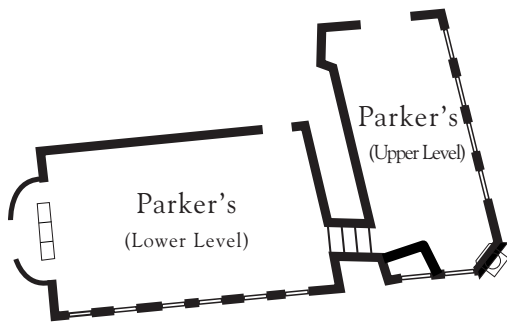
CONFERENCE SPECIFICATIONS



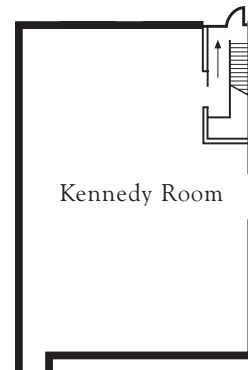
Room	Floor	Square Footage	Dimensions	Ceiling Height	Floor Covering	Portable Walls	Theater	Schoolroom		Banquet		Reception	Hollow Square	Exhibits	
								18"	30"	60"	72"			8 x 10	10 x 10
Rooftop Ballroom	15	3,513	91' x 38'6"	11'3"	Carpet	No	400	240	144	296	300	379	100	22	18
Wheatley Terrace	15	972	43' x 22'6"	10'	Carpet	No	100	51	30	80	84	100	24	8	6
Prefunction Area	15	585	28' x 20'9"	10'	Carpet	No	N/A	N/A	N/A	N/A	N/A	N/A	N/A	N/A	N/A
Parker Suite	14	624	39' x 16'	8'10"	Carpet	No	N/A	N/A	N/A	N/A	N/A	30	N/A	N/A	N/A
Louisa May Alcott	Mez	2,160	60' x 36'	13'2"	Carpet	Yes	240	144	90	180	180	240	77	16	13
Alcott A	Mez	792	22' x 36'	13'2"	Carpet	Yes	85	52	33	70	70	85	28	6	5
Alcott B	Mez	1,368	38' x 36'	13'2"	Carpet	Yes	155	92	57	110	110	155	49	10	8
Prefunction Area	Mez	1,612	52' x 31'	9'4"	Carpet	No	N/A	N/A	N/A	N/A	N/A	174	N/A	10	8
Press Room	Mez	1,980	60' x 33'	10'10"	Carpet	No	220	132	81	160	168	211	52	12	10
King Room	Mez	1,344	56' x 24'	10'10"	Carpet	No	150	51	30	112	110	142	36	10	8
Harriet Beecher Stowe	Mez	703	37' x 19'	9'6"	Carpet	No	72	36	21	66	60	72	18	N/A	N/A
Isabella Stewart Gardner	Mez	608	38' x 16'	9'6"	Carpet	No	62	30	18	48	48	62	16	N/A	N/A
Longfellow Room	Mez	538	21.5' x 25'	9'	Carpet	No	40	21	12	40	36	50	14	N/A	N/A
Brandeis Room	Mez	480	20' x 24'	10'10"	Carpet	Yes	40	21	18	40	36	50	14	N/A	N/A
Holmes Room	Mez	480	20' x 24'	10'10"	Carpet	Yes	40	21	18	40	36	50	14	N/A	N/A
Lowell Room	Mez	480	20' x 24'	10'10"	Carpet	Yes	40	21	18	40	36	50	14	N/A	N/A
Hutchinson Room	Mez	480	20' x 24'	10'10"	Carpet	Yes	40	21	18	40	36	50	14	N/A	N/A
Dickens Boardroom	Mez	425	17' x 25'	10'10"	Carpet	No	33	21	12	30	24	35	12	N/A	N/A
Hawthorne Room	Mez	352	16' x 22'	9'9"	Carpet	No	28	24	15	20	24	40	12	N/A	N/A
Whittier Room	Mez	336	14' x 24'	10'10"	Carpet	No	28	21	12	20	24	35	10	N/A	N/A
Kennedy Room	Lobby	2,040	60' x 34'	14'	Carpet	No	225	136	85	170	170	225	72	15	12
Parker's (lower)	Lobby	2,145	55' x 39'	14'	Carpet	No	N/A	N/A	N/A	160	180	232	N/A	N/A	N/A
Parker's (upper)	Lobby	1,161	43' x 27'	9'	Carpet	No	N/A	N/A	N/A	96	100	126	N/A	N/A	N/A

Meeting room capacities were determined by use of the "Arranger & Comfort Calculator," a standardized meeting room capacity measurement system used by Meeting Professionals International. Banquet capacities are based on 60" rounds, 10 per table; 72" rounds, 12 per table.

CONFERENCE SPECIFICATIONS



LOBBY LEVEL



Kennedy Room