

D I S T I N C T I V E
D E T A I L S



DIRECTIONS

From San Diego International Airport: Follow airport exit signs toward downtown; Turn south onto North Harbor Drive; Turn left onto 5th Avenue; Bear right onto L Street; Hotel is located on the right.

DESTINATIONS

With miles of sandy beaches, a long list of world-famous attractions and an average 70-degree year-round temperature, it's no wonder San Diego has become a premier travel destination. Opening in spring 2004, the new Omni San Diego Hotel will become one more reason to visit this unforgettable seaside city.

Nestled in the heart of the historic Gaslamp Quarter across from the Convention Center, the city's top sites and attractions are just moments away. Explore Balboa Park, take a harbor cruise or catch a baseball game at the new San Diego ballpark, connected to the hotel via pedestrian skywalk. And while the best of the city is right at our doorstep, this elegant new retreat offers you contemporary guest rooms featuring spectacular ocean, bay or city views, a state-of-the-art fitness center and impeccable service that only Omni Hotels can provide. Whether for business or pleasure, the Omni San Diego Hotel will surely bring you back time and time again.

LOCATION

- Located across the street from the San Diego Convention Center
- A premier location in the heart of downtown, adjacent via pedestrian skywalk to the new San Diego Padres Ballpark
- 8 minutes/4 miles from San Diego International Airport
- 40 minutes/35 miles from Palomar Airport
- 2 hours to Los Angeles

TEMPERATURE

San Diego enjoys a mild year-round climate, with highs in the upper 70s during the summer months and temperatures ranging from the high 60s to the high 40s in the wintertime.

SAN DIEGO WEATHER

Month	High	Low	Average
January	65	48	57
February	66	50	58
March	66	52	59
April	68	55	62
May	69	58	64
June	71	61	66
July	76	65	71
August	78	67	73
September	77	65	71
October	75	60	68
November	70	54	62
December	66	49	58

TRANSPORTATION

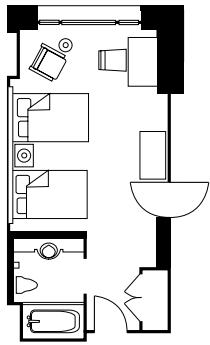
- The San Diego Trolley, known as San Diego's "moving landmark," services downtown, historic Old Town, Mission Valley, Fashion Valley, Qualcomm Stadium and Tijuana.
- MTS bus service provides transportation throughout San Diego County.
- The North County Coaster rail service runs 43 miles up and down the coast, from downtown to Oceanside.
- Private limousine and town car service provides comfortable airport transportation and tours of San Diego and Mexico.
- Cinderella Carriage, an elegant horse-drawn carriage, provides romantic tours through downtown, Seaport Village and the Gaslamp Quarter.

ATTRACTIONS

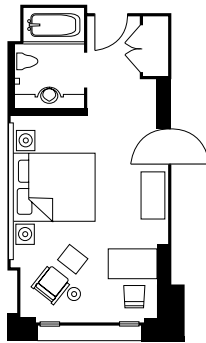
ATTRACTIONS

- Adjacent to the San Diego ballpark, home of the San Diego Padres. The ballpark features a unique architectural design with the most modern facilities for fans.
- 1 block to the historic Gaslamp Quarter, one of San Diego's most historic areas with century-old Victorian buildings, eclectic restaurants, shops, art galleries and night clubs
- 5 blocks to the Children's Museum, providing interactive educational experiences for kids through the arts
- 1/2 mile to the San Diego Civic Theatre, a premier venue for performances of the San Diego Opera, California Ballet, La Jolla Chamber Music Society and Broadway of San Diego
- 1/2 mile to Horton Plaza, a seven-block mall with a wide variety of shops, restaurants and theaters
- 1/2 mile to Seaport Village, a seaside village featuring 75 one-of-a-kind shops, restaurants and sidewalk eateries
- 1 mile to the Museum of Contemporary Art, an internationally acclaimed collection of thought-provoking exhibits within two locations, La Jolla and downtown
- 2 miles to Balboa Park, the cultural center of the city featuring 12 distinctive museums, beautiful cactus, bonsai and rose gardens, an IMAX® theater and a variety of educational and cultural events throughout the year including:
 - The Old Globe Theatre, located in Balboa Park, produces 13 or more plays annually at a three-theatre complex.
 - The Reuben H. Fleet Science Center, featuring a giant dome IMAX® theater, planetarium shows and more than 100 interactive science exhibits
 - The San Diego Museum of Art, exhibiting some of the best American art, 19th century European paintings, Asian art treasures and 20th century paintings and sculptures
 - The San Diego Natural History Museum, a flagship museum in Balboa Park exhibiting San Diego's and Baja California's natural heritage
 - The San Diego Hall of Champions Sports Museum, celebrating San Diego sports history through interactive exhibits and memorabilia
 - The World-Famous San Diego Zoo, featuring more than 4,000 rare and endangered birds, mammals and reptiles and over 6,500 varieties of exotic plants
- 3 miles to Coronado Island, a popular tourist destination known for its pristine beaches, beachside cafés and unique boutique shops. Also home of the North Island Naval Air Force base
- 4 miles to Old Town, reflecting the rich and colorful history of San Diego dating back hundreds of years, featuring five original adobes, San Diego's first newspaper office, a schoolhouse, blacksmith workshop and a plethora of authentic restaurants and shops
- 6 miles to Fashion Valley Shopping Center, the nation's longest outdoor mall featuring more than 200 exclusive stores and restaurants, including Neiman Marcus, Nordstrom, Macy's and Saks Fifth Avenue
- 7 miles to SeaWorld, a 150-acre marine life park featuring Shamu®, shows and exhibits, marine habitats, aquariums and simulated adventure rides
- 8 miles to Knott's Soak City U.S.A., a 1950s California beach-themed water adventure park with 17 tube and body slides, raft rides and a lagoon area for kids
- 8 miles to Coors Amphitheatre, an outdoor performing arts theater specifically designed for concerts
- 13 miles to La Jolla, an upscale seaside town attracting tourists from all over the world with its striking cliffs and beaches, cosmopolitan boutiques and restaurants, unique art galleries, Mediterranean-style architecture and multimillion dollar homes
- 15 miles to the Stephen Birch Aquarium at Scripps, a comprehensive aquarium overlooking the ocean featuring more than 3,000 fish
- 22 miles to Del Mar, an upscale beach community with unique cafés and boutique shops
- 27 miles to Bernardo Winery, Inc., Southern California's oldest operating winery, offering daily complimentary wine tastings
- 32 miles to the San Diego Wild Animal Park, a 2,200-acre exotic animal and botanical reserve featuring endangered species in their natural habitats
- 34 miles to Viejas Casino, a premier shopping and entertainment district featuring a \$30 million factory outlet shopping center
- 36 miles to the Legoland Theme Park, an interactive theme park dedicated to kids ages 3-11 featuring rides, shows and attractions
- 36 miles to the Carlsbad Company Stores and the Carlsbad Flower Fields, home to the largest outlet center in San Diego with more than 75 diverse stores as well as the famous flower fields, showcasing over 50 acres of vibrantly colored ranunculus flowers
- 95 miles to Disneyland and California Adventure Park, two of California's most popular destinations for the whole family with rides, attractions, shops and multiple dining venues

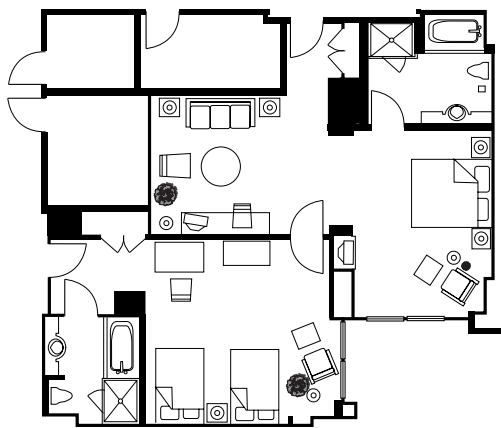
ACCOMMODATIONS



DOUBLE/DOUBLE



KING



JUNIOR SUITE

GUEST ROOMS

Relax in the privacy of one of our 511 elegant guest rooms and suites, decorated in a luxurious, contemporary style and complete with the most modern amenities. Take in the extraordinary views of the San Diego Bay, the sparkling Pacific Ocean or the downtown skyline as you experience modern conveniences such as high-speed wireless Internet access, two dual-line telephones and a large work desk.

SUITES

For the ultimate in luxury, our 33 deluxe suites pamper even the most discriminating traveler. Whether you choose one of our Parlor Suites or the grand Presidential Suite, each and every room is a carefully orchestrated masterpiece of luxury and modern sophistication.

GUEST ROOM INVENTORY

Room Category	Number	Square Feet	Special Features
King	257	364	Modern rooms featuring plush king-size beds, oversized work desks, dual phone lines and views of the downtown skyline, bay or new ballpark
Double/Double	221	364	Beautifully appointed rooms equipped with high-speed Internet access, oversized work desks and incredible city, bay or ballpark views
Junior Suites	14	520	Spacious suite with parlor featuring lavish appointments including a separate shower, lighted makeup mirror and stylish décor
Parlor Suites	13	640	Oversized suite with adjoining parlor offering a relaxing haven with a television, table, comfortable sofa and chair
Hospitality Suites	4	650	One-bedroom deluxe suite with large living room and poolside patio, sleeper sofa, king-size bed and entertainment center
Presidential Suite	1	1,600	Elegant suite features a full kitchenette, wet bar, separate dining area, sitting room and stunning views from balcony
Omni Suite	1	2,200	Luxurious suite featuring full kitchenette, wet bar, separate dining area, sitting room, balcony, elegant marble foyer entry and other lavish appointments

All guest rooms are equipped with a fully stocked refreshment center, iron and full-size ironing board, hair dryer, coffee maker, terry bathrobes, in-room safe, large work desk, dual-line speaker phone with modem, high-speed wireless Internet access, voice mail and on-demand hit movies.

GUEST SERVICES

GUEST SERVICES

- Full-service concierge
- Full-service business center
- 24-hour guest room dining
- Child care services available
- Complimentary shoeshine
- Currency exchange service
- Same day/overnight laundry/dry cleaning services
- ATM machine
- Express check-in and check-out
- Complimentary *USA Today* newspaper delivered to your room each morning

In-Room Technology

- High-speed wireless Internet access
- Two dual-line telephones
- Personalized voice mail
- CD clock radio
- Executive work desk with modem outlet
- On-demand hit movies

In-Room Amenities

- Evening turndown service upon request
- Plush terry robes
- Full-size iron and ironing board
- Hair dryer
- Lighted makeup mirror
- Fully stocked refreshment center
- Coffee maker
- Foam, feather or down pillows available in all rooms upon request
- 330-count Egyptian cotton sheets
- In-room electronic safe (accommodates most laptops)

VIP GIFTS

Our staff is well-versed in the selection of special amenities for VIP guests and would be happy to assist with customized arrangements prior to your guest's arrival. You may also purchase an Omni Hotels gift certificate, a luxurious gift for those who appreciate first-class service. For more information, contact the front desk or visit www.omnihotels.com.

KIDS PROGRAM

Amenities for the Omni Kids Program include:

- Interactive, colorful Web pages designed just for Omni Kids at www.omnikids.com
- A list of the top family attractions located near the hotel
- Omni Hotels can provide outlet covers and a kids' first aid kit for their security and safety
- Rolling backpacks available for kids to take to their room, filled with fun puzzles, games and books to read at bedtime
- Jumbo activity book and bright crayons
- Colorful kid's cup with unlimited refills to use throughout their stay
- Kid-themed menu in the restaurant
- Nighttime children's snack

BUSINESS CENTER

Services are available Monday through Friday, 7:00 a.m. to 5:00 p.m., through the concierge desk and executive offices, including:

- Photocopying
- Fax machine
- Mail and packaging services
- Office equipment rentals
- Secretarial services
- Internet, computer and email access

- Audio/visual equipment and services available
- VCR and video recorder rental
- Microphones, mixers/amplifiers, speakers
- Notary public
- Printing

ON-SITE FITNESS & RECREATION

- Complimentary full-service fitness center, featuring the latest in cardiovascular and weight-training equipment
- The Get Fit Kit allows guests to work out in the privacy of their own room. This kit includes a floor mat, two dumbbells, mini portable radio with earphones, elastic stretch bands and an informative exercise booklet. The Get Fit Kit is available at the front desk to use during your stay.
- For a more intense workout, reserve a Get Fit Guest Room featuring a portable treadmill, sports drinks and energy bars in the refreshment center and a Get Fit Kit to use during your stay. Reserve your Get Fit Guest Room when you make your reservation, or contact the front desk and they will gladly deliver a treadmill and Get Fit Kit to your room. (Subject to availability.)
- Outdoor heated swimming pool and spa
- Jogging maps are available through the concierge.

GUEST SERVICES

OFF-SITE RECREATION

- Walking and jogging trails are located near the hotel. Maps are available through the concierge and the front desk.
- More than 70 miles of beaches, ideal for sunbathing, swimming, surfing, snorkeling, scuba diving, fishing, sailing, kayaking and people-watching
- 13 minutes to Qualcomm Stadium, home of the San Diego Chargers and the San Diego State University Aztecs
- 16 minutes to the Mission Bay Aquatic Center, a full-service watersports facility providing sailing, windsurfing, waterskiing, kayaking, surfing and waverunner rental and instruction
- 19 minutes to Mission Trails Regional Park, one of the largest urban parks in the United States featuring 40 miles of hiking trails, boating on Lake Murray, a state-of-the-art Visitor's Center and historical and cultural sights, all on more than 5,700 acres
- 18 miles to the Auld Course, an incredible John Cook and Cary Bickler 18-hole course featuring five tees, sweeping ocean and mountain views and acres of natural wetlands, all surrounded by a protected Habitat Preserve
- 21 miles to Carmel Mountain Ranch Country Club, rated as one of California's top 30 courses with championship caliber golf
- 22 miles to the Del Mar racetrack, a seaside track featuring 43 days of live Thoroughbred racing, special events, musical concerts and a summer fair
- 28 miles to Maderas Golf Club, an 18-hole championship course designed by Johnny Miller offering spectacular scenic views
- 39 miles to Cuyamaca Rancho State Park, featuring more than 26,000 acres of alpine meadows, forested mountain peaks and 110 miles of hiking trails
- 105 miles to Anza Borrego Desert State Park, the largest desert state park in the United States with 110 miles of hiking and riding trails where visitors can camp, take in the desert landscape and catch a glimpse of golden eagles, roadrunners, bighorn sheep and four species of rattlesnake

FOOD & BEVERAGE

Restaurant hours of operation to be determined.

Full-Service Restaurant

Delight in an exquisite meal at our fine dining restaurant for breakfast, lunch or dinner served in a casually elegant atmosphere or outside on our open patio. Seats 86. Additional outdoor seating for 62.

Lobby Lounge

Visit the intimate Lobby Lounge, the perfect gathering place for a cocktail after work or microbrew before a baseball game. Seats 14.

Espresso Bar/Gift Shop

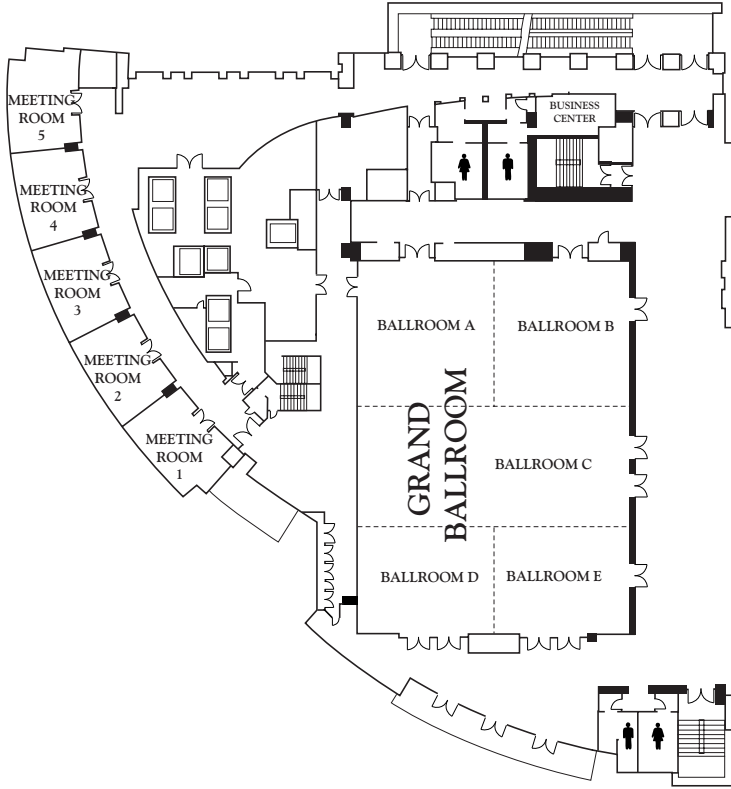
Our espresso bar/gift shop offers an assortment of delicious pastries and desserts, gourmet Peet's coffee and a variety of gifts and sundries. Seats 12.

Guest Room Dining

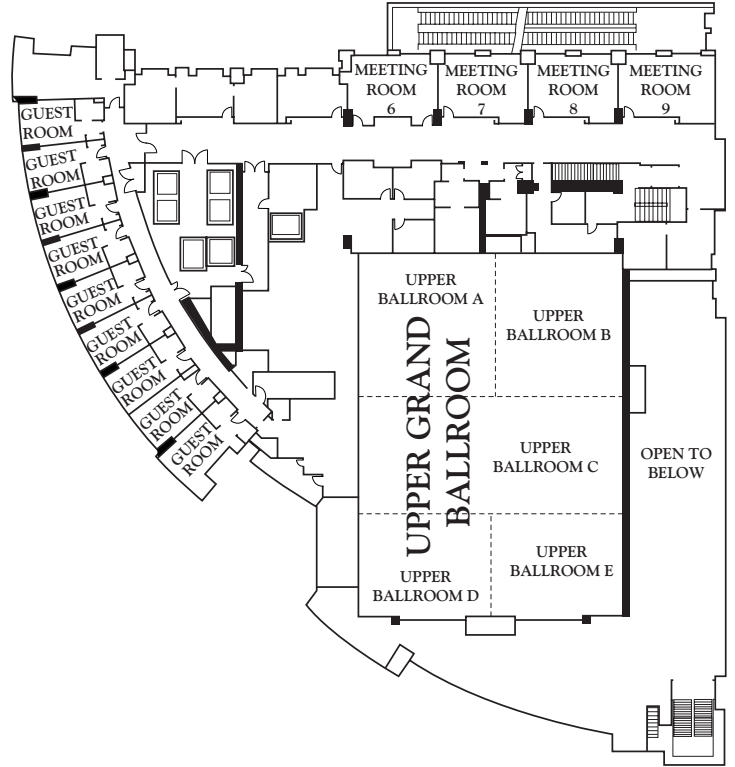
Guest room dining is available if you choose to experience delicious cuisine in the privacy of your guest room.

CONFERENCE SPECIFICATIONS

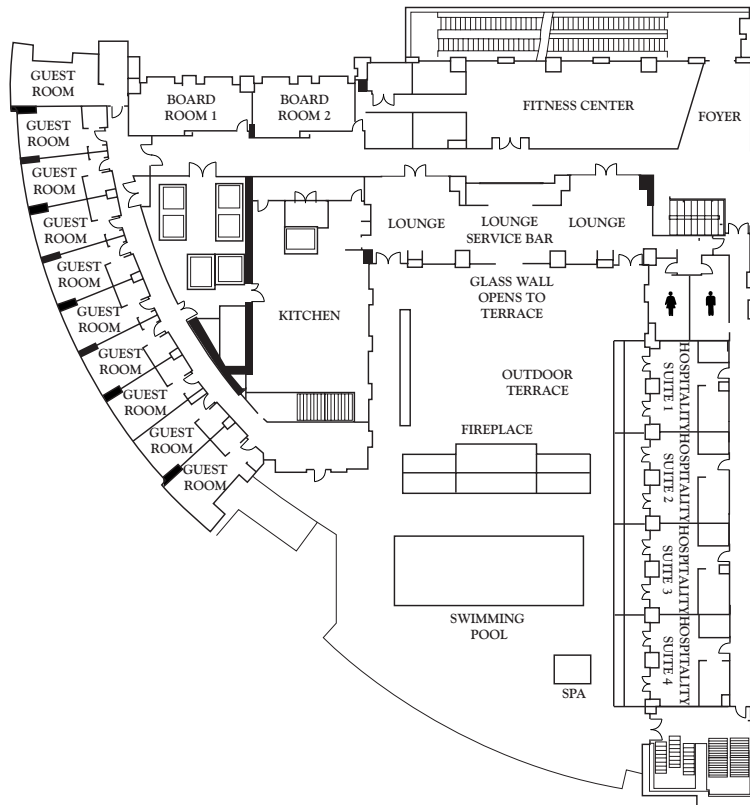
Level Four



Level Five



Level Six



CONFERENCE SPECIFICATIONS

Levels Four, Five and Six Specifications

Room	Level	Square Footage	Dimensions	Ceiling Height	Floor Covering	Portable Walls	Theater	Schoolroom		Banquet		Reception	Hollow Square	Exhibits	
								18"	30"	60"	72"			8x10	10x10
Grand Ballroom	Four	9,266	82' x 113'	19'0"	Carpet	Yes	1,055	654	540	784	790	1,000	–	59	47
Ballroom A	Four	1,804	41' x 44'	19'0"	Carpet	Yes	205	126	105	152	150	195	48	11	9
Ballroom B	Four	1,804	41' x 44'	19'0"	Carpet	Yes	205	126	105	152	150	195	48	11	9
Ballroom C	Four	2,870	82' x 35'	19'0"	Carpet	Yes	322	198	165	240	240	305	–	18	14
Ballroom D	Four	1,394	41' x 34'	19'0"	Carpet	Yes	155	96	78	112	110	147	38	–	–
Ballroom E	Four	1,394	41' x 34'	19'0"	Carpet	Yes	155	96	78	112	110	147	38	–	–
Meeting Room 1	Four	594	22' x 27'	10'0"	Carpet	No	66	39	33	48	50	63	14	–	–
Meeting Room 2	Four	594	22' x 27'	10'0"	Carpet	No	66	39	33	48	50	63	14	–	–
Meeting Room 3	Four	594	22' x 27'	10'0"	Carpet	No	66	39	33	48	50	63	14	–	–
Meeting Room 4	Four	594	22' x 27'	10'0"	Carpet	No	66	39	33	48	50	63	14	–	–
Meeting Room 5	Four	594	22' x 27'	10'0"	Carpet	No	66	39	33	48	50	63	14	–	–
Meeting Room 6	Five	532	28' x 19'	10'6"	Carpet	No	61	36	30	40	40	58	14	–	–
Meeting Room 7	Five	532	28' x 19'	10'6"	Carpet	No	61	36	30	40	40	58	14	–	–
Meeting Room 8	Five	532	28' x 19'	10'6"	Carpet	No	61	36	30	40	40	58	14	–	–
Meeting Room 9	Five	532	28' x 19'	10'6"	Carpet	No	61	36	30	40	40	58	14	–	–
Boardroom 1	Six	544	34' x 16'	9'0"	Carpet	No	–	–	–	–	–	–	–	–	–
Boardroom 2	Six	544	34' x 16'	9'0"	Carpet	No	–	–	–	–	–	–	–	–	–
Outdoor Terrace	Six	4,000	N/A	N/A	Carpet	No	–	–	–	–	–	–	–	–	–

Meeting room capacities are determined by use of the "Arranger & Comfort Calculator," a standardized meeting room capacity measurement system used by Meeting Professionals International. 60" banquet capacities are based on 8 persons per table. 72" banquet capacities are based on 10 persons per table.

CONFERENCE AND BANQUET FACILITIES

- More than 20,000 square feet of flexible meeting space, ideal for any size occasion from intimate gatherings to grand gala events
- The spacious 9,266 square-foot Grand Ballroom, featuring large pre-function area and an outdoor terrace
- Nine state-of-the-art meeting rooms and two stately boardrooms, equipped with high-speed wireless Internet access, built-in audio/visual equipment and ergonomically correct seating

- Audio equipment (speakers, mixers, amplifiers, etc.)
- Camcorder
- LCD projector

Electrical Outlets

Electrical outlets are conveniently located throughout function space. Voltage capacity meets standards.

Shipping and Receiving

Arrangements are available through our full-service shipping and receiving department. To ensure proper delivery and handling of your packages, please label packages clearly. Due to limited storage space, we request packages not arrive more than one week prior to your event.

Receiving Docks

Your Conference Planning Manager can assist in providing special arrangements for delivery of your meeting materials.

Post-Conference Shipping

Your Conference Planning Manager can arrange for your shipping needs after your conference concludes.

Maintenance

Our engineering department is available 24 hours to provide general technical, mechanical and equipment repair assistance.

Parking

- On-site valet parking (fee)
- Convenient self-parking garage across the street.

TECHNICAL ASSISTANCE

Our on-site technicians are available to provide the most current equipment and technical support for your function including:

- Overhead projectors
- Video players