



MEETING & EVENT  
GUIDE

OMNI  RESORTS  
amelia island | florida

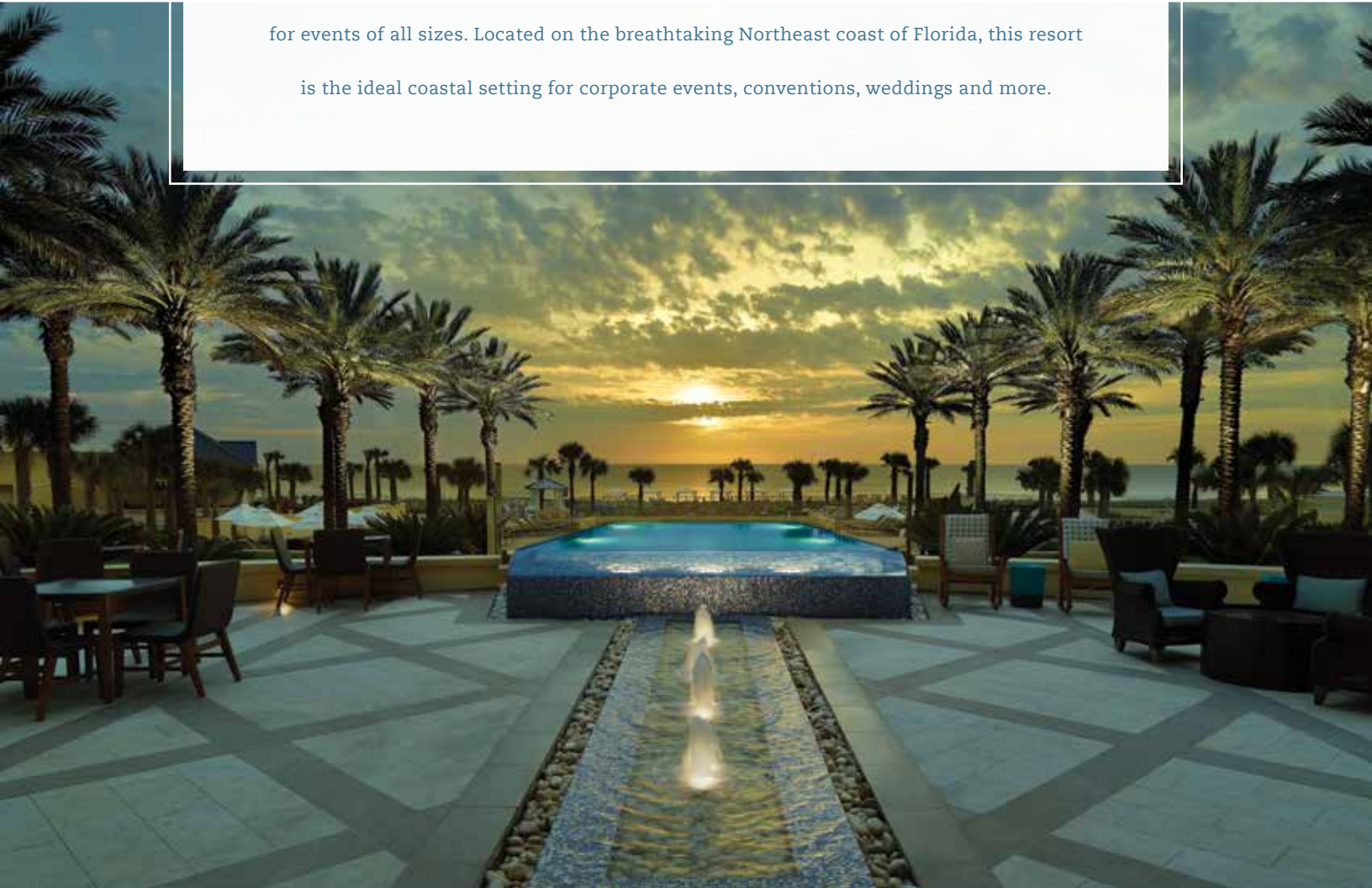
[OMNIHOTELS.COM/AMELIAISLAND](http://OMNIHOTELS.COM/AMELIAISLAND)





## EXCELLENCE AT EVERY TURN

Versatile meeting space makes Omni Amelia Island Resort the perfect destination for events of all sizes. Located on the breathtaking Northeast coast of Florida, this resort is the ideal coastal setting for corporate events, conventions, weddings and more.





## ABOUT OMNI AMELIA ISLAND RESORT



### AN EVENT TO REMEMBER

Omni Amelia Island Resort offers more event space, more oceanfront rooms, more resort amenities and just what you need to attract and entertain attendees.

### A PERFECT FIT

The resort offers luxurious oceanfront rooms and suites. Multi-bedroom options are available through The Villas of Amelia Island.

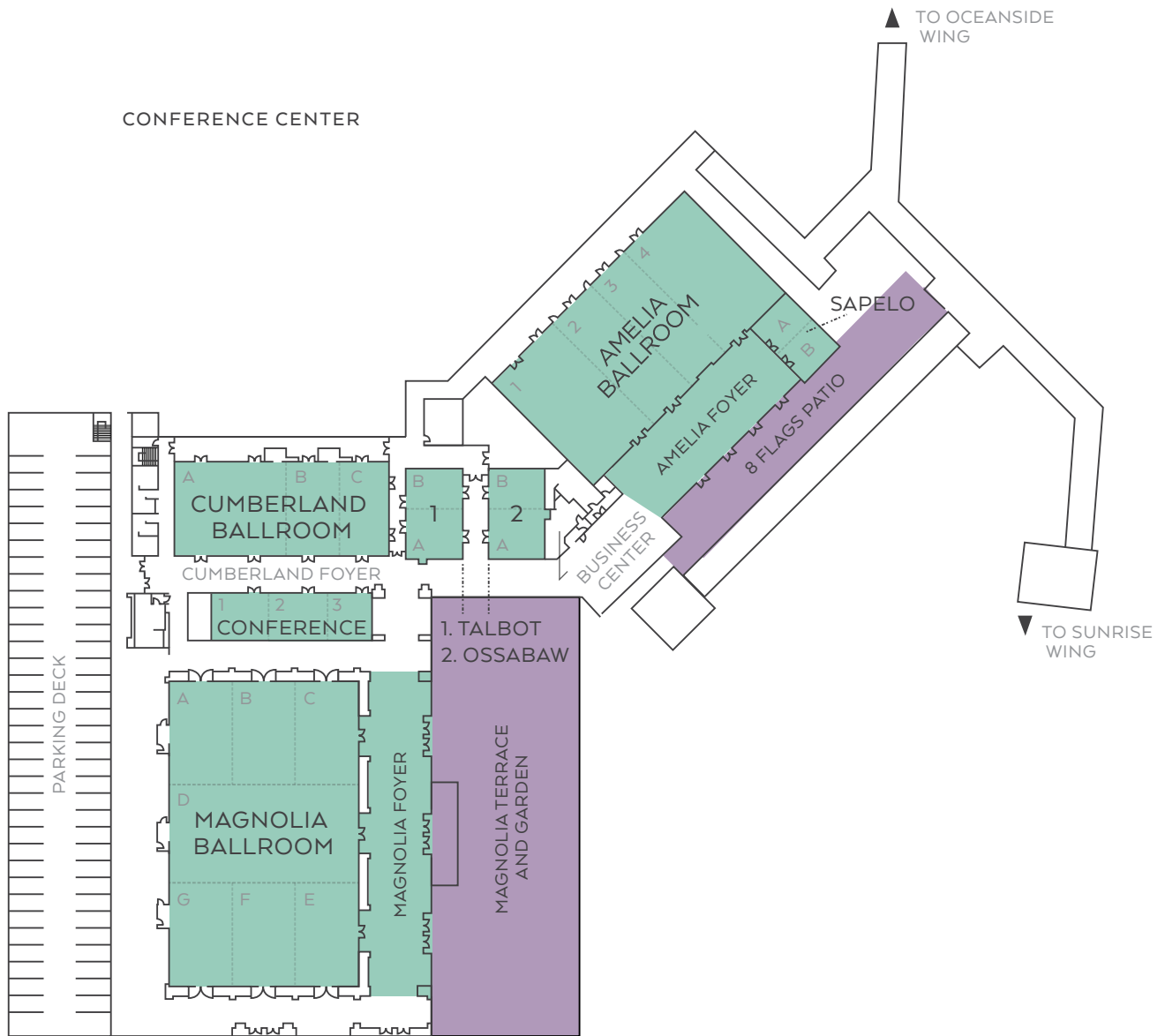
402 oceanfront rooms:

- All with private balconies or patios
- Including 27 suites
- A total of 600 beds

300+ spacious villas:

- Located throughout the 1,350-acre resort
- Choice of one-, two- and three-bedroom villas
- Private homes available

# OMNI AMELIA ISLAND RESORT MEETING & EVENT SPACE



# OMNI AMELIA ISLAND RESORT MEETING & EVENT ROOM CAPACITY

	SQUARE FOOTAGE	DIMENSIONS	CEILING HEIGHT	THEATER	CLASSROOM	BANQUET	RECEPTION	8' X 10' EXHIBITS	BOARDROOM
<b>CONFERENCE CENTER</b>									
AMELIA BALLROOM	11,165	77' x 145'	16'	1,000	600	696	1,000	68	32
AMELIA 1 & 2 OR 3 & 4	5,544	77' x 72'	16'	500	300	352	600	34	—
AMELIA 1, 2 & 3 OR 2, 3 & 4	7,392	77' x 96'	16'	700	400	472	700	45	—
AMELIA 1 OR 2 & 3 OR 4	3,696	77' x 48'	16'	350	200	216	350	23	—
AMELIA FOYER	2,821	31' x 91'	—	—	—	120	360	17	—
OSSABAW	1,440	30' x 48'	10'	144	56	80	147	—	—
OSSABAW A OR B	720	30' x 24'	10'	60	32	40	66	—	—
TALBOT	1,440	30' x 48'	10'	144	56	80	147	—	—
TALBOT A OR B	720	30' x 24'	10'	60	32	40	66	—	—
SAPELO	880	22' x 40'	10'	90	44	48	—	—	—
SAPELO A OR B	440	22' x 20'	10'	36	24	24	—	—	—
CUMBERLAND BALLROOM	5,439	49' x 111'	15'/17'	572	323	320	600	34	—
CUMBERLAND A	2,695	49' x 55'	15'/17'	253	140	160	300	16	—
CUMBERLAND B	1,372	49' x 28'	15'/17'	120	64	64	150	—	—
CUMBERLAND A & B	4,116	49' x 84'	15'/17'	450	228	256	425	25	—
CUMBERLAND B & C	2,695	49' x 55'	15'/17'	253	133	160	300	16	—
CUMBERLAND C	1,323	49' x 27'	15'/17'	120	64	64	150	—	—
CONFERENCE 1	645	25' x 26'	10'	48	24	—	—	—	—
CONFERENCE 2	750	25' x 30'	10'	52	30	—	—	—	—
CONFERENCE 3	570	25' x 23'	10'	40	18	—	—	—	—
CONFERENCE 2 & 3	1,325	25' x 24'	10'	96	57	64	130	—	—
MAGNOLIA BALLROOM	16,825	168' x 100'	22'	1,865	1,200	1,100	1,600	104	—
MAGNOLIA A OR G	1,982	57' x 34'	22'	216	99	120	190	12	—
MAGNOLIA B, C, E OR F	1,867	57' x 33'	22'	205	99	120	180	11	—
MAGNOLIA D	5,425	54' x 100'	22'	600	300	350	550	33	—
MAGNOLIA A, B & C OR G, F & E	5,700	57' x 100'	22'	630	342	360	575	35	—
MAGNOLIA A & B OR G & F	3,824	55' x 67'	22'	422	216	240	380	23	—
MAGNOLIA A-D OR D-G	11,100	111' x 100'	22'	1,222	630	480	1,000	—	—
MAGNOLIA FOYER	13,200	—	—	—	—	300	400	—	—
MAGNOLIA GARDEN	11,000	—	—	—	—	550	750	—	—





# OMNI AMELIA ISLAND RESORT MEETING & EVENT ROOM CAPACITY

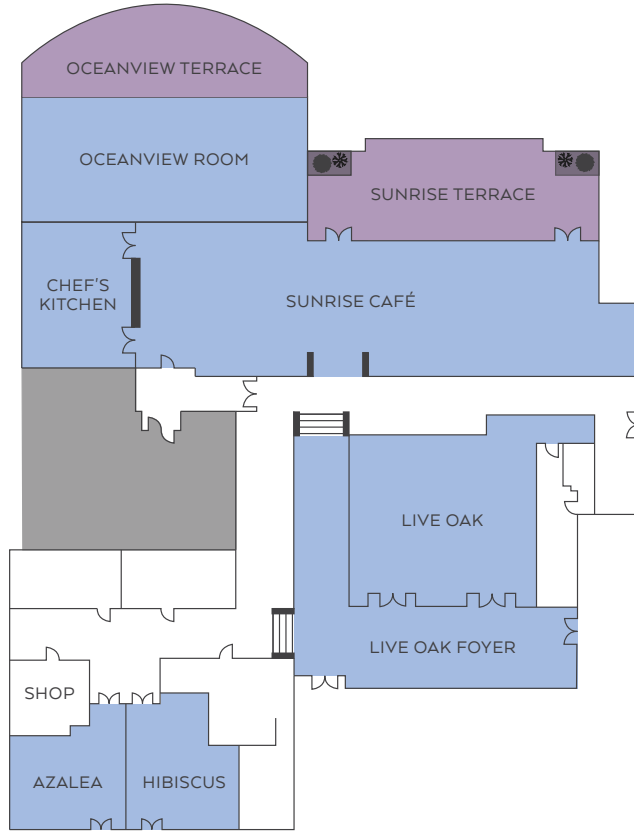
	SQUARE FOOTAGE	DIMENSIONS	CEILING HEIGHT	THEATER	CLASSROOM	BANQUET	RECEPTION	HOLLOW SQUARE	BOARDROOM	U-SHAPE
<b>LOCATED WITHIN THE HOTEL</b>										
AZALEA BOARDROOM	525	21' x 25'	10'	—	—	—	—	—	16	—
HIBISCUS BOARDROOM	589	19' x 31'	10'	50	24	24	50	20	20	21
LIVE OAK	1,845	41' x 45'	10'	205	84	104	180	48	—	36
OCEANVIEW ROOM	2,210	65' x 34'	10'	—	—	80	150	—	—	—
CHEF'S KITCHEN	852	33' x 25'	—	—	—	—	—	—	—	—
SUNRISE CAFÉ	—	—	—	—	—	135	135	—	—	—
LIVE OAK FOYER	1,000	—	—	—	—	40	100	—	—	—
<b>RACQUET PARK CONFERENCE CENTER</b>										
EGRET/HERON	2,070	46' x 45'	10'	198	112	112	200	64	—	48
IBIS/OSPREY	1,088	34' x 32'	10'	102	40	64	100	40	—	32
VERANDAH RESTAURANT	—	—	—	—	—	134	—	—	—	—
<b>SANDCASTLES LOCATED IN CONDOMINIUM</b>										
SANDCASTLES I	597	224" x 269"	8'	48	32	—	—	24	—	20
SANDCASTLES II	518	19'10" x 26'	8'	39	24	—	—	—	—	—
<b>OUTDOOR VENUES</b>										
OCEANVIEW TERRACE	3,600	120' x 30'	—	—	—	96	150	—	—	—
WALKER'S LANDING	3,825	45' x 85'	—	—	—	180	250	—	—	—
MAGNOLIA TERRACE AND GARDEN	11,000	—	—	—	—	500	750	—	—	—
8 FLAGS LAWN & PATIO	3,600	—	—	—	—	300	400	—	—	—
OAK POINT LAWN	7,000	90' x 75'	—	—	—	300	500	—	—	—
SUNRISE TERRACE	—	—	—	—	—	60	100	—	—	—
CANOPY PARK	—	—	—	—	—	120	225	—	—	—
THE SPROUTING PROJECT	—	—	—	—	—	120	200	—	—	—
BEACH	—	—	—	—	—	350	500	—	—	—

Floor plans not shown for Sandcastles, Walker's Landing, Oak Point Lawn, The Sprouting Project and beach.

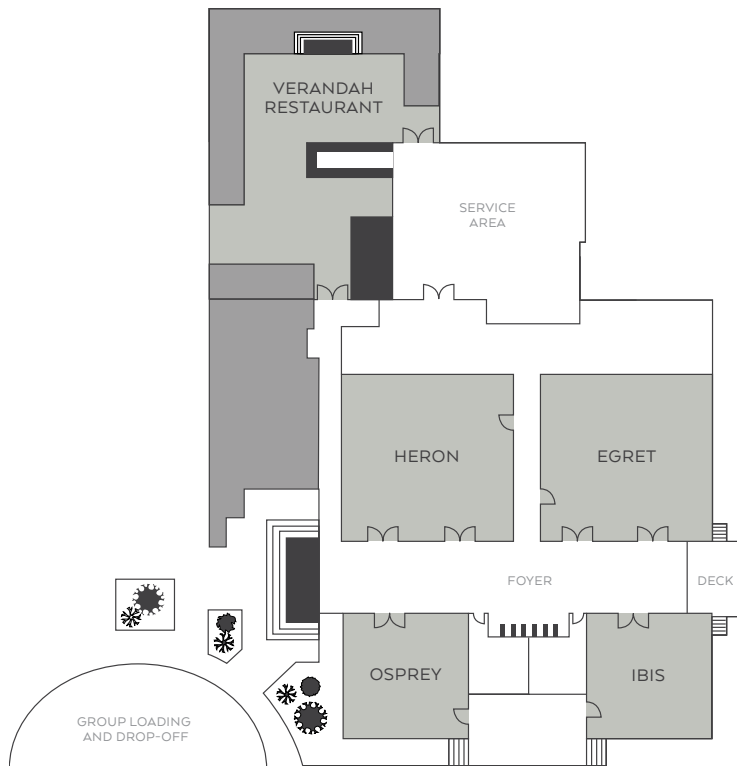


# OMNI AMELIA ISLAND RESORT MEETING & EVENT SPACE

LOCATED WITHIN THE HOTEL



RACQUET PARK CONFERENCE CENTER



## AMELIA ISLAND HIGHLIGHTS

Located along the Northeast coast of Florida and home to some of the island's most exciting attractions.

- 29 miles from Jacksonville International Airport
- 4 miles from Fernandina Beach Municipal Airport for private aircraft
- 3.5 miles of uncrowded dune-swept beaches
- 36 holes of championship golf
- 23 Har-Tru® tennis courts
- Poolscape with infinity edge pool
- Nature-inspired signature spa
- Shopping village with restaurants and quaint boutiques
- Bicycling, kayaking, island hoppers, paddleboarding, Segway™ and nature tours
- Deep sea, backwater, freshwater fishing/sailing charters
- Horseback riding on the beach
- Miles of walking, jogging and biking trails
- Health & Fitness Center with heated indoor pool

### DINING

Bob's Steak & Chop House  
Falcon's Nest  
Marché Burette  
Marsh View Bar & Grill  
Natural Slice  
Oceanside  
Seaglass Lounge  
Sunrise Café  
Verandah

OMNI AMELIA ISLAND RESORT  
39 BEACH LAGOON ROAD  
AMELIA ISLAND, FLORIDA 32034  
[OMNIHOTELS.COM/AMELIAISLAND](http://OMNIHOTELS.COM/AMELIAISLAND)

