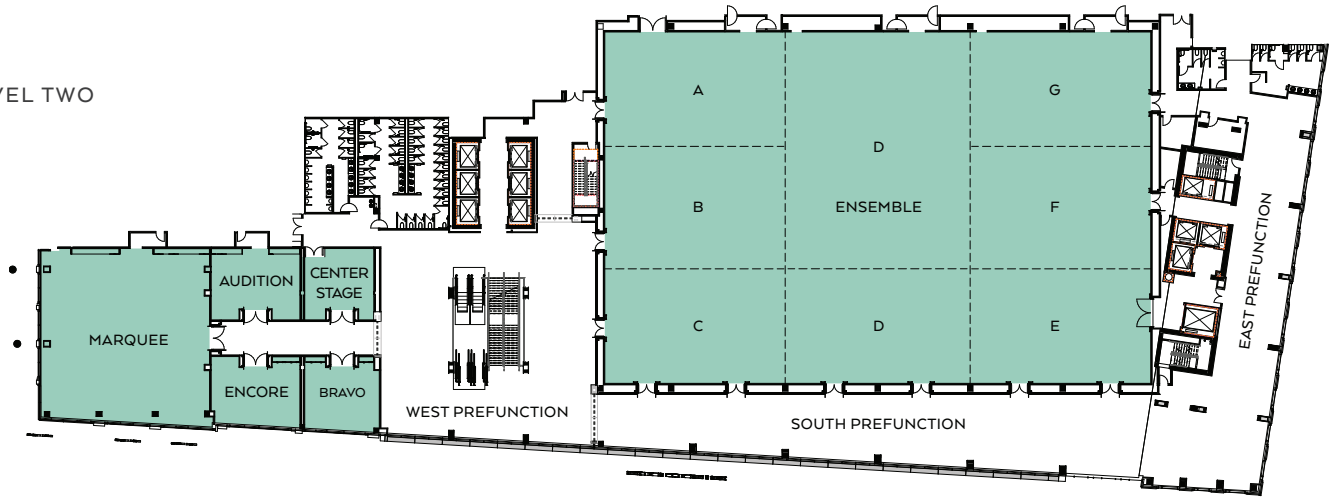
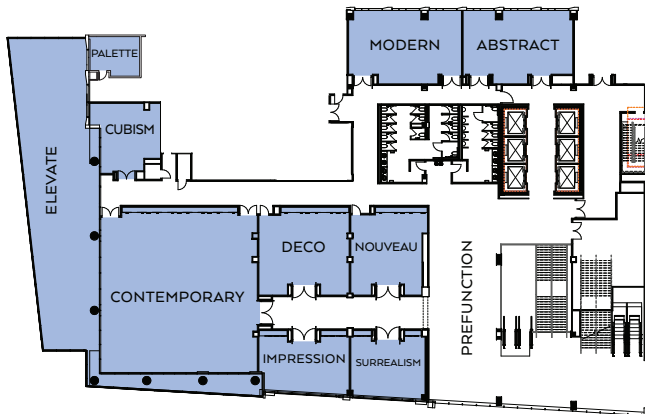


OMNI BOSTON HOTEL AT THE SEAPORT MEETING SPACE

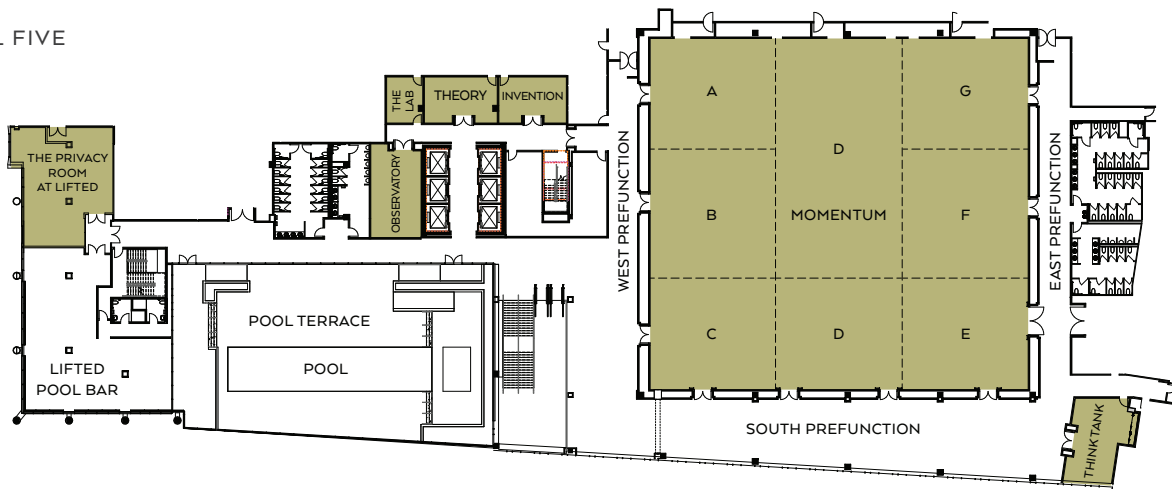
LEVEL TWO



LEVEL THREE



LEVEL FIVE



# OMNI BOSTON HOTEL AT THE SEAPORT MEETING ROOM CAPACITY

	SQUARE FOOTAGE	DIMENSIONS L X W	CEILING HEIGHT	BANQUET	CLASSROOM	U-SHAPE	THEATER	RECEPTION	EXHIBIT 8' X 10' 10' X 10'		CONFERENCE	HOLLOW SQUARE
<b>LEVEL TWO</b>												
<b>ENSEMBLE BALLROOM</b>	<b>25,585</b>	<b>127'x198'</b>	<b>21'-26'</b>	<b>2,129</b>	<b>1,683</b>	—	<b>2,840</b>	<b>2,586</b>	<b>160</b>	<b>128</b>	—	—
ENSEMBLE A, B, C, D	17,139	125'x132'	21'-26'	1,426	1,176	—	1,902	1,714	107	86	—	—
ENSEMBLE D, E, F, G	17,144	125'x132"	21'-26'	1,426	1,176	—	1,902	1,714	107	86	—	—
ENSEMBLE A, B, C	8,437	125'x65'	21'-26'	702	540	—	937	844	53	42	—	—
ENSEMBLE E, F, G	8,442	125'x65'	21'-26'	702	540	—	937	844	53	42	—	—
A	2,824	41'x65'	21'-26'	235	165	69	313	282	18	14	54	84
B	2,901	43'x65'	21'-26'	241	165	72	322	290	18	15	54	84
C	2,712	41'x65'	21'-26'	226	165	69	301	271	18	14	54	84
D	8,702	125'x65'	21'-26'	702	540	—	937	844	53	42	—	—
E	2,712	41'x65'	21'-26'	226	165	69	301	271	18	14	54	84
F	2,901	43'x65'	21'-26'	241	165	72	322	290	18	15	54	84
G	2,829	41'x65'	21'-26'	235	165	69	314	283	18	14	54	84
<b>SOUTH PREFUNCTION</b>	<b>4,940</b>	—	<b>10'4"-12'</b>	—	—	—	—	<b>494</b>	—	—	—	—
<b>EAST PREFUNCTION</b>	<b>4,211</b>	—	<b>10'4"-12'</b>	—	—	—	—	<b>421</b>	—	—	—	—
<b>WEST PREFUNCTION</b>	<b>7,965</b>	—	<b>10'4"-12'</b>	—	—	—	—	<b>797</b>	—	—	—	—
BRAVO	678	23'x27'	11'6"	60	54	21	96	68	—	—	18	24
ENCORE	740	21'x32'	11'6"	70	54	21	96	74	—	—	24	24
AUDITION	835	22'x32'	11'6"	70	60	24	96	84	—	—	24	24
CENTER STAGE	580	22'x27'	11'6"	50	42	18	84	58	—	—	18	18
MARQUEE	3,861	63'x61'	11'-12'	300	252	66	432	386	—	—	42	84
<b>LEVEL THREE</b>												
SURREALISM	571	20'x27'	9'	48	24	12	60	57	—	—	12	18
IMPRESSION	646	18'x32'	9'	50	27	12	60	65	—	—	18	18
DECO	936	27'x32'	11'6"	60	45	21	84	94	—	—	18	24
NOUVEAU	723	27'x27'	11'6"	50	45	18	77	72	—	—	18	18
CUBISM	453	25'x22'	11'8"	30	24	12	50	45	—	—	12	12
MODERN	1,006	24'x30'	11'6"	72	48	30	112	101	—	—	30	30
ABSTRACT	948	23'x39'	11'6"	72	48	30	112	95	—	—	24	30
CONTEMPORARY	3,000	60'x56'	10'-11'4"	210	180	45	360	300	—	—	42	54
PALETTE	269	15'x19'	10'	20	12	9	32	27	—	—	12	—
<b>PREFUNCTION</b>	<b>7,104</b>	—	<b>9'-13"</b>	—	—	—	—	<b>710</b>	—	—	—	—
ELEVATE	2,968	—	—	—	—	—	—	297	—	—	—	—
<b>LEVEL FIVE</b>												
<b>MOMENTUM BALLROOM</b>	<b>17,039</b>	<b>127'x137'</b>	<b>19'-22'6"</b>	<b>1,418</b>	<b>1,173</b>	—	<b>1,891</b>	<b>1,704</b>	<b>106</b>	<b>85</b>	—	—
MOMENTUM A, B, C, D	11,457	126'x89'	19'-22'6"	953	765	—	1,272	1,146	72	57	—	—
MOMENTUM D, E, F, G	11,299	126'x88'	19'-22'6"	940	765	—	1,254	1,130	72	56	—	—
MOMENTUM A, B, C	5,686	126'x44'	19'-22'6"	473	357	—	631	569	36	28	—	—
MOMENTUM E, F, G	5,528	126'x43'	19'-22'6"	460	357	—	614	569	35	28	—	—
A	1,951	42'x44'	19'-22'6"	162	126	54	217	195	12	10	36	66
B	1,868	42'x44'	19'-22'6"	155	108	54	207	187	12	9	36	66
C	1,867	42'x44'	19'-22'6"	155	108	54	207	187	12	9	36	66
D	5,771	126'x45'	19'-22'6"	480	357	—	641	569	36	29	—	—
E	1,814	42'x43'	19'-22'6"	151	108	54	201	181	11	9	36	66
F	1,815	42'x43'	19'-22'6"	151	108	54	201	182	11	9	36	66
G	1,899	42'x43'	19'-22'6"	158	126	54	211	190	12	9	36	66
<b>SOUTH PREFUNCTION</b>	<b>4,101</b>	—	<b>8'11"-9'8"</b>	—	—	—	—	<b>410</b>	—	—	—	—
<b>EAST PREFUNCTION</b>	<b>2,416</b>	—	<b>8'11"-9'8"</b>	—	—	—	—	<b>242</b>	—	—	—	—
<b>WEST PREFUNCTION</b>	<b>4,961</b>	—	<b>8'11"-9'8"</b>	—	—	—	—	<b>496</b>	—	—	—	—
INVENTION	374	16'x24'	9'	40	27	15	56	37	—	—	18	—
THEORY	370	16'x26'	9'	40	27	15	56	37	—	—	18	—
OBSERVATORY	572	31'x18'	9'7"	50	42	21	80	57	—	—	24	24
THE LAB	196	17'x13"	9'	20	15	9	30	20	—	—	12	—
THINK TANK	750	17'x31'	9'-10'	—	—	—	—	—	—	—	16	—
THE PRIVACY ROOM	1,026	33'x36'	9'	—	—	—	—	103	—	—	—	—

Meeting room capacities were determined by the use of the "Hotel Planner Banquet Space Calculator" using 60" and 72" rounds of 10-12, three chairs per 6'x30" table (U-Shape and Conference capacity) and three chairs per 6'x18" table (Classroom capacity) allowing for minimal audiovisual equipment.