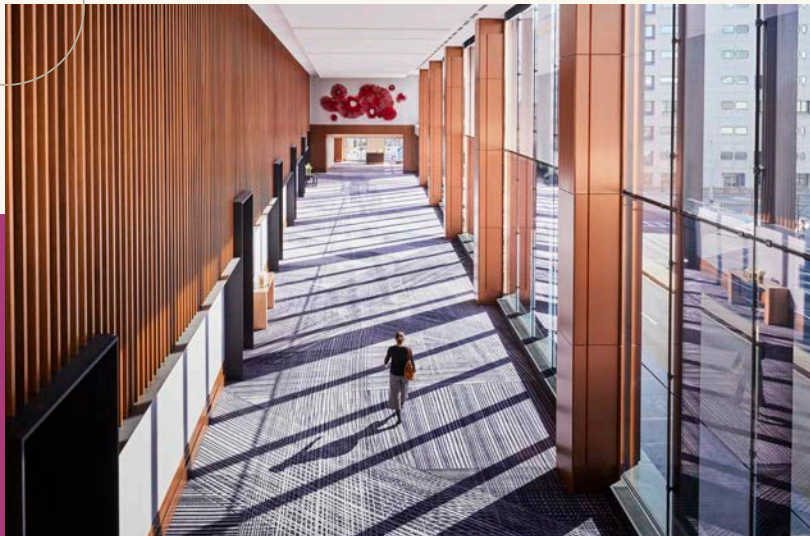


Meetings & Event Guide.

OMNI BOSTON HOTEL AT THE SEAPORT

EXPERIENCES MATTER HERE



OMNI
BOSTON
AT THE SEAPORT

Creativity's NEW HOME.

Omni Boston Hotel at the Seaport interiors are built on a foundation of culture and with a view to the future. Taking inspiration from Boston's timeless cultural institutions, the hotel's essence is accessible to everyone, welcoming guests to experience art history or current innovations. Located in the ever-evolving Seaport neighborhood, the hotel's offerings will be unmatched only by its striking waterfront views of Boston Harbor.

The AAA Four Diamond Rated hotel boasts 1,054 finely appointed guest rooms, including 52 suites and 100,000 square feet of flexible function space. There are plenty of amenities at the hotel, including seven distinct dining experiences, a scenic rooftop pool and chic Breve Spa.



CRESCENDO LOUNGE & BAR

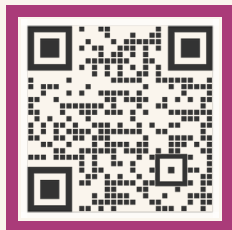


COQUETTE

about Omni Boston Hotel at the Seaport.

A NEW TAKE ON A HISTORIC CITY

Omni Boston Hotel at the Seaport radiates the energy of modern Boston. Take in the sights of the neighborhood from the fifth floor deck, where a heated outdoor pool is available exclusively for hotel guests. Innovative room design includes cozy Artist Tower Rooms designed for solo travelers, as well as larger rooms and suites. A curated art collection featuring paintings, sculptures, and murals shine a light on Boston's brightest talent. Sample the fare of seven distinct restaurants, and visit Breve Spa to refresh your senses for another day of leadership or learning.



SCAN TO VIEW
ART COLLECTION



Accommodations at Omni Boston Hotel at the Seaport.

ACCOMMODATIONS

The Omni Boston Hotel at the Seaport boasts 1,054 finely appointed guestrooms spanning 22 stories, with 52 suites and distinguished local design influences from the nautical Seaport District to Boston's rich musical complexion. Our innovative guestrooms feature contemporary layouts of sophisticated warmth and simplicity, embracing guests as they enjoy sweeping views of Boston Harbor and the greater Seaport District.



PATRON TOWER KING

ARTIST TOWER

A minimalist space with maximum style, this cozy studio layout features an open closet concept, and a coffee and water station on each floor. Our non-traditional room comfortably sleeps one and offers luxurious bedding, room service, 24-hour fitness center, rooftop pool, seven dining outlets, and a full-service spa on site.

PATRON TOWER

Inspired by Boston's rich performing arts heritage, the Patron Tower rooms are designed with rich colors and offer furnishings with clean lines and a spacious elegance inspired by the arts and the fluidity of the nearby harbor. Starting at 380 square-feet, with a selection of suites up to 2,000 square-feet.



PATENT NO. 22004 PRESIDENTIAL SUITE



DIRECTOR & CHOREOGRAPHER SUITES



ONE-BEDROOM SUITE

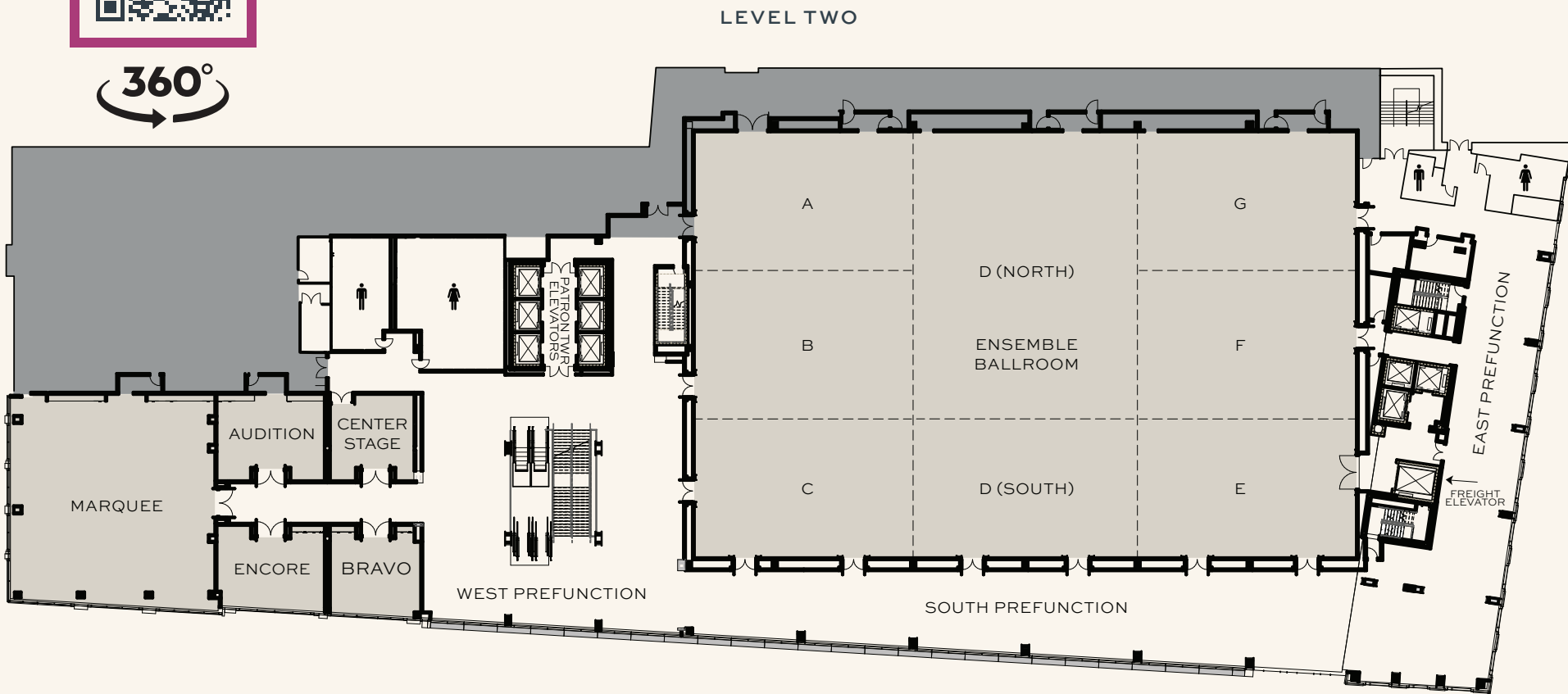
An event to remember.

- 1,054 elegant guest rooms, including 52 luxurious suites; Artist Tower rooms offer a cozy studio layout, while Patron Tower rooms offer spacious elegance and clean lines
- Approximately 100,000 square feet of flexible indoor and outdoor meeting, event and pre-function space that includes the largest hotel ballroom in Boston and a 3,000 square foot balcony with views across the city skyline
- On-site audiovisual equipment services offering the latest technology and Wi-Fi
- Climate-controlled direct access to 2.1 million square feet of meeting and exhibit space at the Thomas M. Menino Convention & Exhibition Center, just steps away
- Year round rooftop pool deck with views of the Boston skyline
- Seven unique dining experiences including Mediterranean eatery Kestra, upscale sports bar The Sporting Club, Coquette, a chic restaurant offering coastal Mediterranean cuisine, Lifted Rooftop Restaurant and Bar located on the 5th floor
- Full-service Breve Spa, offering a curated menu of body treatments, massages, facials and salon services
- 3,800 square foot, 24-hour fitness center including Peloton®, Cybex, and StairMaster® equipment
- Our Grab & Go 24-hour sundries store, Legato, offers Just Walk Out technology (developed by Amazon), a checkout-free shopping experience where customers can grab items, and then simply walk out without needing to wait in a checkout line
- The FedEx Office Print & Ship Center at hotel offers you everything you need to meet your convention exhibiting needs—from packing and shipping to signs, banners, office supplies, copying and printing services, open daily



CONTEMPORARY

Flexible, Next Generation Event & Meeting Space.



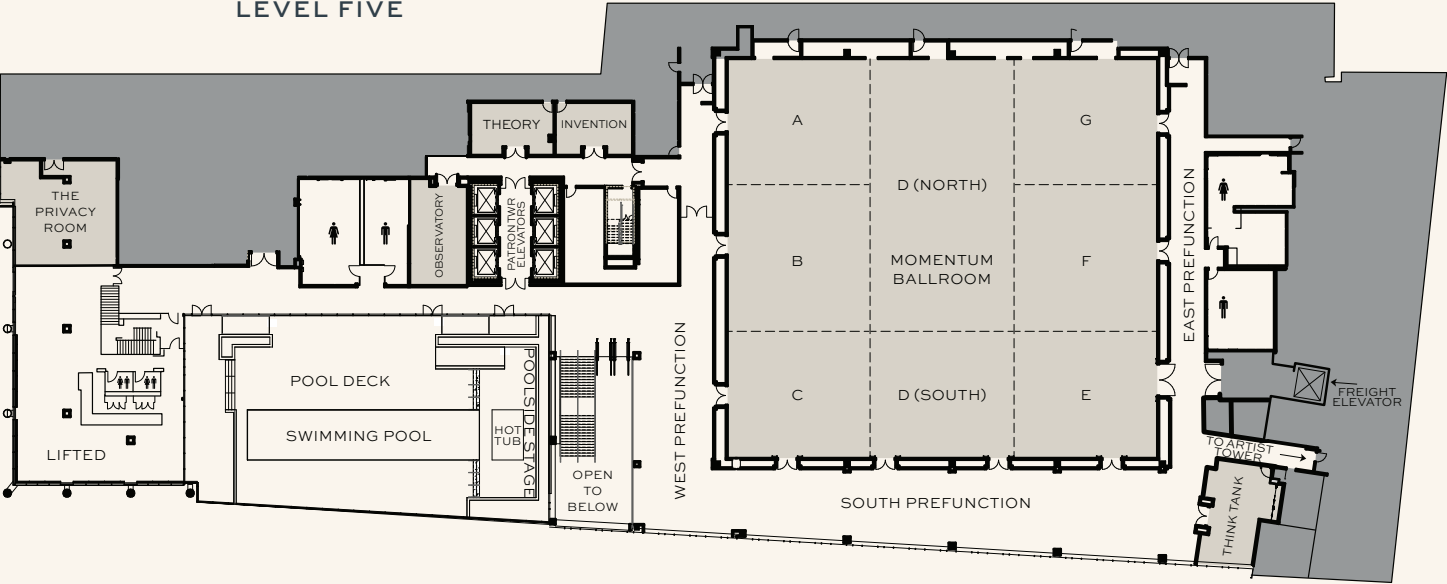
	SQUARE FOOTAGE	DIMENSIONS L X W	CEILING HEIGHT	BANQUET	CLASS ROOM	THEATER	RECEPTION	EXHIBITS 8' X 10'	EXHIBITS 10' X 10'	CONF.	U-SHAPE	HOLLOW SQUARE
LEVEL TWO												
ENSEMBLE BALLROOM	25,585	127'x198'	21'-26'	2,040	1,560	2,800	2,500	160	131	-	-	
ENSEMBLE A, B, C, D	17,139	125'132'	21'-26'	1,320	1,056	1,740	1,700	-	-	-	-	
ENSEMBLE D, E, F, G	17,144	125'132"	21-26	1,320	1,056	1,740	1,700	-	-	-	-	-
ENSEMBLE A, B, C	8,437	125'65'	21-26	600	504	870	800	-	-	-	-	-
ENSEMBLE E, F, G	8,442	125'65'	21-26	600	504	870	800	-	-	-	-	-
ENSEMBLE A, B, D NORTH	11,450	86'x133'	21-26	720	700	960	1,000	-	-	-	-	-
ENSEMBLE A	2,824	41'x65'	21-26	180	168	230	280	-	-	54	63	78
ENSEMBLE B	2,901	43'x65'	21-26	180	168	240	290		-	54	63	78
ENSEMBLE C	2,712	41'x65'	21-26	180	156	230	270	-	-	54	63	78
ENSEMBLE D	8,702	125'x65'	21-26	600	528	870	800	-	-	-	-	-
ENSEMBLE D SOUTH	2,747	41'x67'	21-26	180	169	230	270	-	-	54	63	78
ENSEMBLE E	2,712	41'x65'	21-26	180	184	252	270	-	-	54	63	78
ENSEMBLE F	2,901	43'65'	21-26	180	208	262	290	-	-	54	63	78
ENSEMBLE G	2,829	41'x65'	21-26	180	195	252	280	-	-	54	63	78
LEVEL TWO PREFUNCTION	17,116	-	10'4"-12'	-	-	-	1,500	27	22	-	-	-
SOUTH PREFUNCTION	4,940	-	26'	-	-	-	800	-	-	-	-	-
EAST PREFUNCTION	4,211	-	10'4"-12'	-	-	-	350	-	-	-	-	-
WEST PREFUNCTION	7,965	-	10'4"-12'	-	-	-	350	-	-	-	-	-
BRAVO	678	23'x27'	11'6"	48	24	60	67	-	-	18	22	26
ENCORE	740	21'x32'	11'6"	60	40	72	74	-	-	24	28	32
AUDITION	835	22'x32'	11'6"	60	51	74	83	-	-	26	28	32
CENTER STAGE	594	22'x27'	11'6"	36	24	50	59	-	-	18	20	24
MARQUEE	3,861	63'x61'	11'-12'	300	252	330	380	-	-	48	57	78

Meeting room capacities were determined using 72" rounds of 12 (rounds capacity), three chairs per 6'X30" table (u-shape capacity) and three chairs per 6'X18" table (classroom capacity) allowing for minimal audiovisual equipment.

LEVEL THREE



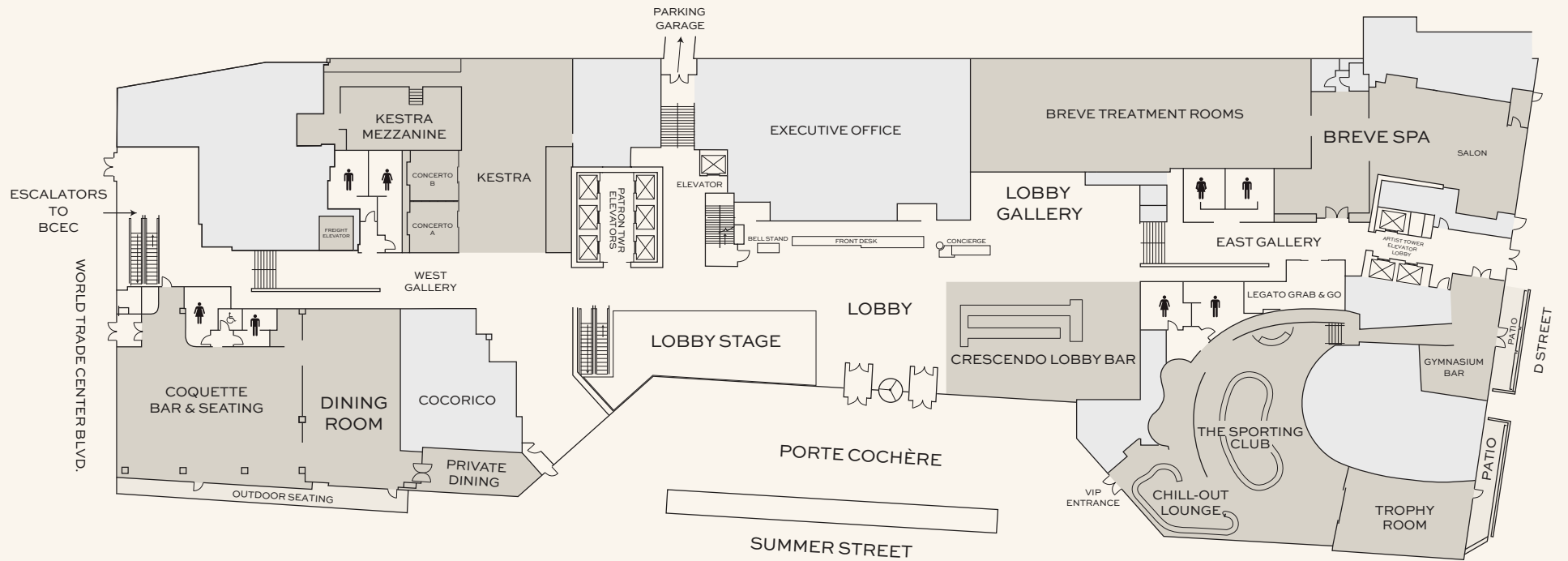
LEVEL FIVE



	SQUARE FOOTAGE	DIMENSIONS L X W	CEILING HEIGHT	BANQUET	CLASS ROOM	THEATER	RECEPTION	EXHIBIT 8' X 10'	EXHIBIT 10' X 10'	CONF.	U-SHAPE	HOLLOW SQUARE
LEVEL THREE												
SURREALISM	571	22'x25'	9'	24	24	54	57	-	-	18	20	24
IMPRESSIONISM	646	19'x32'	9'	24	27	52	64	-	-	20	22	26
DECO	936	28'x31'	11'6"	60	65	84	93	-	-	26	33	40
NOUVEAU	723	28'x25'	11'6"	48	40	70	72	-	-	18	20	26
CUBISM	453	21'x21'	11'8"	24	18	24	45	-	-	14	15	18
MODERN	1,006	24'x40'	11'6"	60	51	90	100	-	-	32	36	42
ABSTRACT	948	23'x39'	11'6"	60	48	90	94	-	-	32	36	42
CONTEMPORARY	3,000	51'x56'	10'-11'4"	192	200	260	300	-	-	42	54	72
LEVEL THREE PREFUNCTION	7,104	-	9'-13"	-	-	-	-	-	-	-	-	-
ELEVATE	2,968	-	-	-	-	-	250	-	-	-	-	-
LEVEL FIVE												
MOMENTUM BALLROOM	17,039	127'x137'	19'-22'6"	1,320	948	1,632	1,700	106	88	-	-	-
MOMENTUM A, B, C, D	11,457	126'x89'	19'-22'6"	840	660	1,088	1,100	-	-	-	-	-
MOMENTUM D, E, F, G	11,299	126'x88'	19'-22'6"	840	660	1,088	1,100	-	-	-	-	-
MOMENTUM A, B, C	5,686	126'x44'	19'-22'6"	360	315	544	560	-	-	-	-	-
MOMENTUM A, B, D NORTH	7,650	90'x85'	19'-22'6"	432	480	660	760	-	-	-	-	-
MOMENTUM E, F, G	5,528	126'x43'	19'-22'6"	360	315	544	550	-	-	-	-	-
MOMENTUM A	1,951	42'x44'	19'-22'6"	108	105	176	190	-	-	32	45	60
MOMENTUM B	1,868	42'x44'	19'-22'6"	108	105	176	180	-	-	32	45	60
MOMENTUM C	1,867	42x44	19'-22'6"	108	105	176	180	-	-	32	45	60
MOMENTUM D	5,771	126'x45'	19'-22'6"	480	378	544	570	-	-	-	-	-
MOMENTUM D SOUTH	1,890	42'x45'	19'-22'6"	108	105	176	180	-	-	32	45	60
MOMENTUM E	1,814	42'x43'	19'-22'6"	108	105	176	180	-	-	32	45	60
MOMENTUM F	1,815	42'x43'	19'-22'6"	108	105	176	180	-	-	32	45	60
MOMENTUM G	1,899	42'x43'	19'-22'6"	108	105	176	180	-	-	32	45	60
LEVEL FIVE PREFUNCTION	11,478	-	8'11"-9'8"	-	-	-	650	16	14	-	-	-
SOUTH PREFUNCTION	4,101	-	8'11"-9'8"	-	-	-	350	-	-	-	-	-
EAST PREFUNCTION	2,416	-	8'11"-9'8"	-	-	-	125	-	-	-	-	-
WEST PREFUNCTION	4,961	-	8'11"-9'8"	-	-	-	175	-	-	-	-	-
INVENTION	374	16'x24'	9'	24	16	20	37	-	-	16	17	20
THEORY	370	16'x26'	9'	24	16	20	37	-	-	18	21	24
OBSERVATORY	572	31'x18'	9'7"	48	35	50	57	-	-	24	26	32
THINK TANK	750	17'x31'	9'-10'	-	-	-	-	-	-	16	-	-

Meeting room capacities were determined using 72" rounds of 12 (rounds capacity), three chairs per 6'X30" table (u-shape capacity) and three chairs per 6'X18" table (classroom capacity) allowing for minimal audiovisual equipment.

LEVEL ONE/LOBBY



**Thomas M. Menino
Convention & Exhibits Center**

Restaurants & Private Dining Rooms.

	RECEPTION	SEATED
THE SPORTING CLUB	350	200
TROPHY ROOM	75	50
CHILL-OUT LOUNGE	40	30
GYMNASIUM BAR	30	-
BREVE SPA	70	-
SALON	45	-
COQUETTE	200	180
PRIVATE DINING ROOM	30	26
LIFTED	200	115
PRIVACY ROOM	50	30
WITH POOL DECK	300	-
KESTRA	200	130
MEZZANINE	60	40
CONCERTO A & B (EACH)	20	8
CRESCENDO LOBBY BAR	100	-
PARTIAL BUY-OUT	50	-



THE SPORTING CLUB

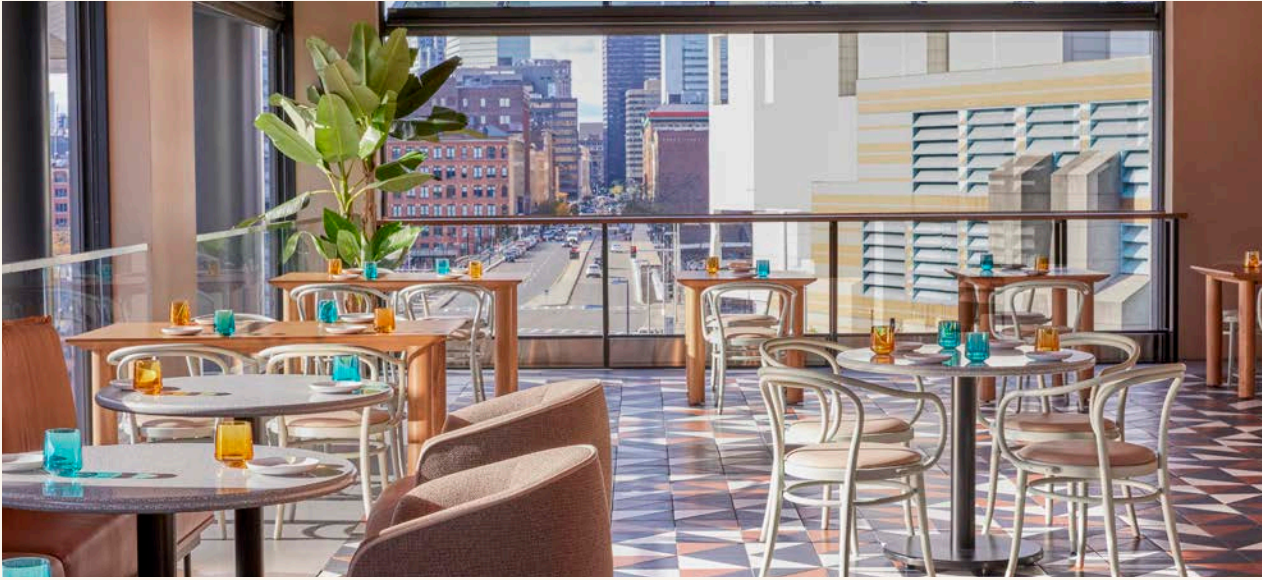
The Sporting Club is an illustrious sanctuary for taste-makers, urbanites and sports enthusiasts. Enjoy a locally and globally inspired menu in a modern sporting atmosphere.

Choose from three different private room areas all with their unique touches- including the Celtic's old practice facility parquet floor.



COQUETTE

Immerse yourself in flavors inspired by the Mediterranean coastline at Coquette, the hottest avant-garde dining concept in the Seaport District. Brunch served every weekend.



LIFTED ROOFTOP RESTAURANT & BAR

Lifted is a refreshing fifth-floor tropical oasis of contemporary food and cocktails, boasting skyline views paired with a refreshing menu of whimsical plates and drinks.



KESTRA

Styled after Boston's rich orchestral history, guests at Kestra can expect upscale dining with a Mediterranean-American flair in the Seaport District.



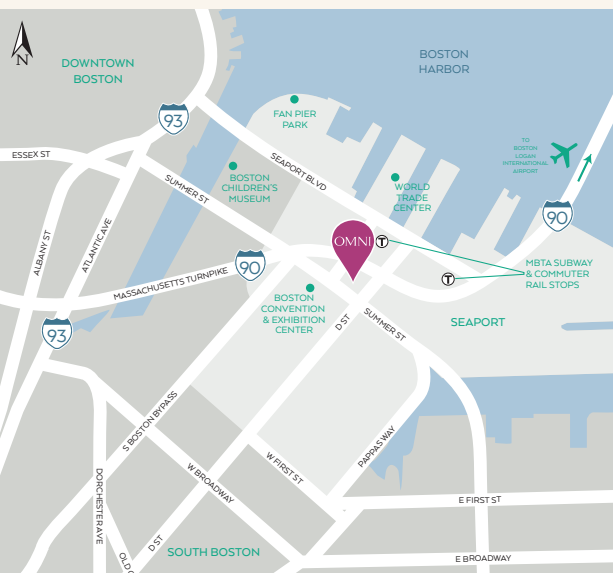
CRESCENDO LOUNGE & BAR

Crescendo Lobby Bar is focused on composed cocktails, a stellar wine and beer selection, and simple, well-orchestrated savory and sweet lounge bites.



BREVE SPA

Revitalize in the unrivalled serenity found only at Breve, the only luxury spa and beauty bar in the Seaport, featuring a salon, eight treatment rooms, a relaxation room, sauna and a couple's parlor.



OMNI BOSTON HOTEL AT THE SEAPORT
450 SUMMER STREET
BOSTON, MASSACHUSETTS 02210
OMNIHOTELS.COM/BOSTONSEAPORT



Boston *highlights.*

The most intriguing cities are constantly reinventing themselves. Boston leans into its centuries-old heritage, while also making space for innovation and creativity. Recently revitalized, the Seaport District is a hotbed of modern art, cutting-edge dining and walkable public spaces. Step into the city's storied past with cultural sights along the iconic Freedom Trail nearby.

AIRPORT

Boston Logan International Airport | 7 min

CULTURAL ATTRACTIONS & EXPERIENTIAL ENTERTAINMENT:

Leader Bank Pavilion
 Institute of Contemporary Art
 Boston Tea Party Ships & Museum
 Boston Fire Museum
 Boston Children's Museum
 Flight Club Darts USA
 SPIN Boston
 Kings Bar & Bowling
 Alamo Drafthouse Cinema
 Puttshack Boston Seaport
 F1 Racing Boston
 Boston Seaport Commons
 (Shopping & Entertainment)

Boston Harborwalk & Fan Pier Park
 Trillium, Lord Hobo & Harpoon
 Brewerie
 Fan Pier Park
 Boston Public Gardens
 Faneuil Hall Marketplace
 Newbury Street
 "North End"
 Chinatown
 Back Bay
 Beacon Hill
 Financial District

ARTS & CULTURE

Leader Bank Pavilion | 4 blocks
 Institute of Contemporary Arts | 8 blocks
 Boston Tea Party Ships & Museum | 8 blocks

SPORTS

TD Garden (home of the NBA Boston Celtics and NHL Boston Bruins) | 14 min
 Fenway Park (home of the MLB Boston Red Sox) | 19 min



OMNI BOSTON
AT THE SEAPORT

[OMNIHOTELS.COM/BOSTONSEAPORT](https://omnihotels.com/bostonseaport)
BOSSEA.LEADS@OMNIHOTELS.COM