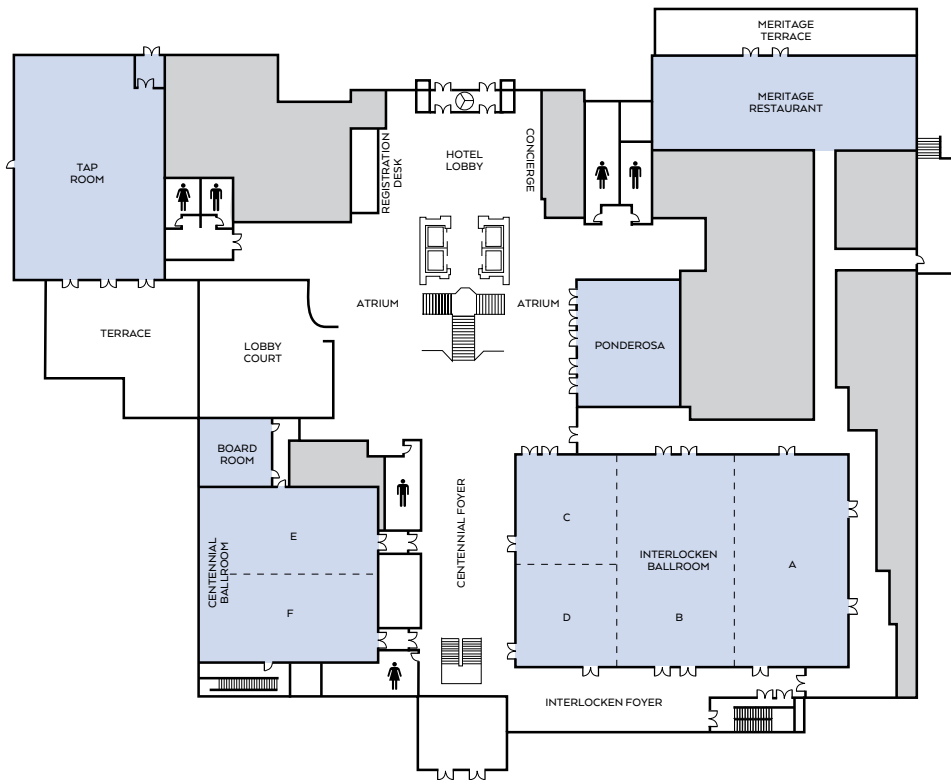


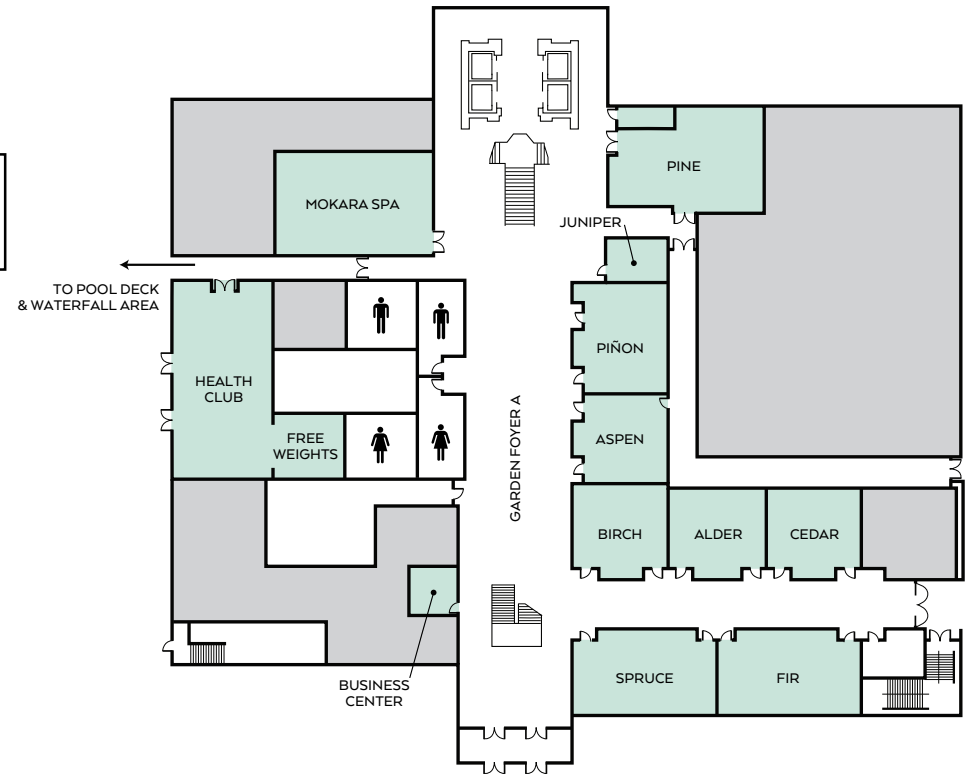
OMNI® HOTELS & RESORTS

interlocken | denver

LOBBY LEVEL



GARDEN LEVEL



OMNI® HOTELS & RESORTS

interlocken | denver

OMNI INTERLOCKEN HOTEL MEETING ROOM CAPACITY

ROOM NAME	FLOOR	SQUARE FOOTAGE	DIMENSIONS	CEILING HEIGHT	THEATER	CONFERENCE	U-SHAPE	HOLLOW SQUARE	CLASSROOM 3 PER 6	CLASSROOM 2 PER 6	BANQUET 60" (10)	BANQUET 72" (12)	RECEPTION	6' TABLE TOP EXHIBITS	EXHIBITS 8X10	EXHIBITS 10X10
Interlocken Ballroom	1st	9,120	120' x 76'	16'	1,100	-	-	-	541	362	644	700	947	100	56	52
Interlocken Ballroom A	1st	3,040	76' x 40'	16'	280	60	66	78	162	110	220	204	316	30	18	15
Interlocken Ballroom B	1st	3,496	76' x 46'	16'	360	60	69	84	195	130	240	240	368	34	21	17
Interlocken Ballroom C	1st	1,428	32' x 42'	16'	140	32	41	42	81	54	30	72	153	13	9	7
Interlocken Ballroom D	1st	1,156	34' x 34'	16'	128	26	36	42	66	44	80	72	121	10	-	-
Centennial Ballroom	1st	4,096	64' x 64'	12'	420	-	72	90	231	154	250	300	421	37	26	20
Centennial Ballroom E	1st	2,048	32' x 64'	12'	210	48	57	60	126	86	140	144	211	24	12	10
Centennial Ballroom F	1st	2,048	32' x 64'	12'	210	48	57	60	126	86	140	144	211	24	12	10
Atrium	1st	4,611	-	32'	-	-	-	-	-	-	-	-	-	21	9	7
Centennial Foyer	1st	2,120	28' x 68'	32'	-	-	-	-	-	-	-	-	211	15	10	5
Interlocken Foyer	1st	2,064	20' x 70'	12'	-	-	-	-	-	-	-	-	211	15	6	5
Ponderosa	1st	1,628	37' x 44'	11'	128	32	36	42	75	24	80	96	100	17	-	-
Boardroom	1st	567	21' x 27'	12'	60	16	19	20	36	24	40	48	40	-	-	-
Garden Foyer A	Garden	3,000	75' x 25'	10'	-	-	-	-	-	-	-	-	-	-	7	7
Garden Foyer B	Garden	1,148	14' x 91'	10'	-	-	-	-	-	-	-	-	-	-	-	-
Pine	Garden	1,185	44' x 29'	10'6"	114	32	36	42	63	42	70	72	75	-	-	-
Spruce	Garden	850	40.5' x 21'	10'6"	90	32	35	40	36	30	60	48	60	-	-	-
Fir	Garden	850	40.5' x 21'	10'6"	90	32	35	40	36	30	60	48	60	-	-	-
Birch	Garden	648	27' x 24'	10'6"	60	20	23	26	30	16	40	48	40	-	-	-
Alder	Garden	648	27' x 24'	10'6"	60	20	23	26	30	16	40	48	40	-	-	-
Cedar	Garden	648	27' x 24'	10'6"	60	20	23	26	30	16	40	48	40	-	-	-
Aspen	Garden	624	26' x 24'	10'6"	60	18	24	30	20	20	40	48	35	-	-	-
Pinion	Garden	638	29' x 22'	10'6"	70	20	24	28	28	20	40	48	-	-	-	-
Juniper	Garden	224	14' x 16'	10'6"	-	8	-	-	-	-	10	-	-	-	-	-
Pool Deck	Outdoors	-	-	-	-	-	-	-	-	-	150	-	200	-	-	-
Tap Room Terrace	Outdoors	1,280	-	-	-	-	-	-	-	-	-	-	50	-	-	-
Fairways Tent	Outdoors	3,000	50' x 60'	-	-	-	-	-	-	-	240	-	-	-	-	-
Fairways Terrace	Outdoors	-	-	-	-	-	-	-	-	-	-	-	100	-	-	-
Pavilion	Outdoors	4,750	95' x 50'	12'	-	-	-	-	-	-	320	-	475	-	-	-