



OMNI  HOTELS & RESORTS
the grove park inn

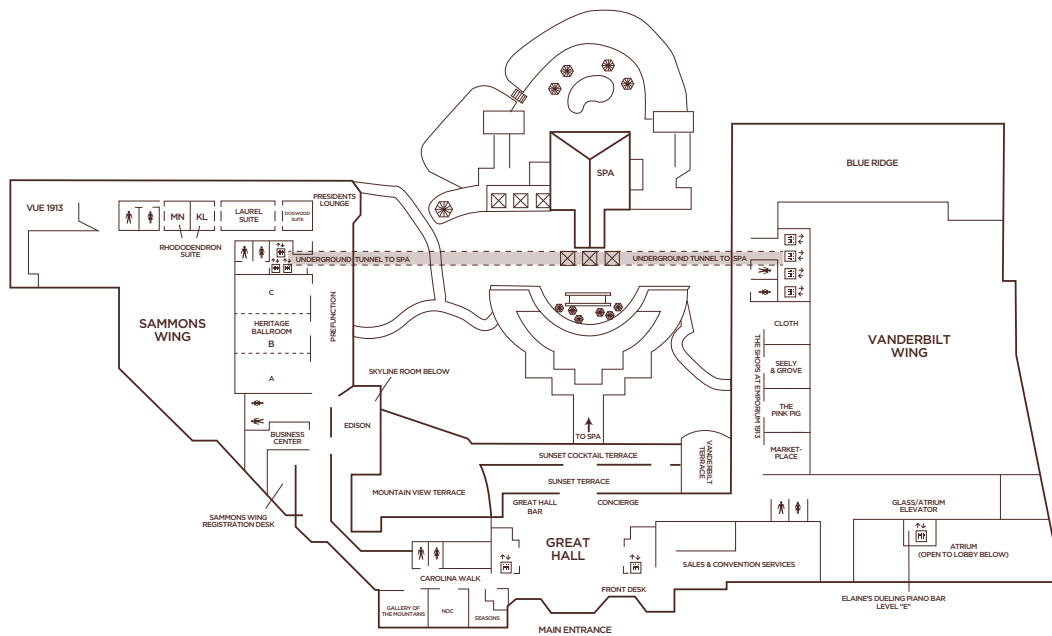


Luxury in the mountains

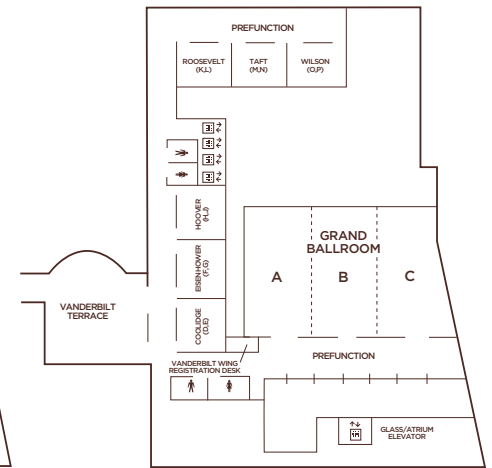
The Omni Grove Park Inn offers a timeless retreat in an idyllic setting. A rich and storied history, spectacular views of the surrounding Blue Ridge Mountains, a recent total renovation and an unrivaled location all make this resort the ideal site for your next event.



- 513 luxurious guest rooms, including 28 rooms on a private Club Floor with a designated Concierge
- 55,000 square feet of flexible event, banquet, convention and meeting space, which includes an 18,000 square-foot Grand Ballroom and the 8,800 square-foot Heritage Ballroom
- State-of-the-art audiovisual services
- Multiple on-site restaurants provide guests with selections such as fresh seafood and regional cuisine, and include indoor and outdoor dining options
- 18-hole championship golf course, originally designed by esteemed golf course architect Donald Ross
- 43,000 square-foot subterranean spa with 20 water features, including two therapeutic waterfall pools
- 50,000 square-foot Sports Complex with three indoor and three outdoor tennis courts, a racquetball court, indoor pool, Fitness Club, Cardio Room and more
- An abundance of outdoor activities in the Blue Ridge mountain range, including hiking, kayaking, canopy tours, flyfishing and more



LOBBY LEVEL (10) FLOOR PLAN



LEVEL 8 FLOOR PLAN

Room	Floor	Square Footage	Dimensions	60" Rounds	72" Rounds	Theater	Classroom	Reception	Conference	U-SHAPE
VANDERBILT WING	—	33,994	—	—	—	—	—	—	—	—
Grand Ballroom Prefunction	8	4,092	—	—	—	—	—	—	—	—
Grand Ballroom	8	17,760	160'x111'	1,000	1,050	2,200	1,100	1,865	—	116
Ballroom A	8	5,772	52'x111'	384	480	648	400	600	—	50
Ballroom B	8	5,772	52'x111'	384	480	648	400	600	—	50
Ballroom C	8	6,216	56'x111'	384	480	648	400	600	—	50
Coolidge	8	1,260	28'x45'	72	90	120	84	100	36	40
Coolidge D or E	8	630	28'x22'	32	40	50	36	50	20	20
Eisenhower	8	1,260	28'x45'	72	90	120	84	100	36	40
Eisenhower F or G	8	630	28'x22'	32	40	50	36	50	20	20
Hoover	8	1,260	28'x45'	72	90	120	84	100	36	40
Hoover H or J	8	630	28'x22'	32	40	50	36	50	20	20
Roosevelt	8	1,176	28'x42'	72	90	120	84	100	36	40
Roosevelt K or L	8	588	28'x21'	32	40	50	36	50	20	20
Taft	8	1,176	28'x42'	72	90	120	84	100	36	40
Taft M or N	8	588	28'x21'	32	40	50	36	50	20	20
Wilson	8	1,176	28'x42'	72	90	120	84	100	36	40
Wilson O or P	8	588	28'x21'	32	40	50	36	50	20	20
Vanderbilt Terrace*	8	4,290	66'x65'	120	160	—	—	200	—	—
SAMMONS WING	—	17,007	—	—	—	—	—	—	—	—
Heritage Ballroom	10	8,778	114'x76'	624	780	1,100	600	1,100	—	—
Heritage Ballroom A, B, or C	10	2,926	38'x77'	208	260	350	220	300	—	20
Dogwood Suite	10	429	27'x15'	16	20	36	24	40	12	—
Laurel Suite	10	1,536	31'x48'	112	140	140	120	150	36	40
Laurel Suite F & G or H & J	10	768	32'x24'	48	60	60	48	75	20	20
Laurel Suite F, G, H, or J	10	384	16'x24'	16	20	25	16	30	10	10
Rhododendron KL	10	459	27'x17'	—	—	—	—	—	12	—
Rhododendron MN	10	459	27'x17'	—	—	—	—	—	8	—
Mt. View Terrace*	—	6,925	—	280	350	300	—	600	—	—
Skyline Room	—	4,686	66'x71'	224	280	280	180	400	—	28
COUNTRY CLUB	—	6,596	—	—	—	—	—	—	—	—
Fox & Hounds	—	1,316	28'x47'	64	80	100	84	100	30	35
Fox & Hounds Side Area	—	630	14'x45'	32	40	—	—	40	—	—
Drawing Room	—	1,914	33'x58'	112	140	160	140	180	48	44
Country Club Patio*	—	4,536	81'x56'	200	250	200	—	350	—	—
Regent Room	—	720	20'x36'	48	60	60	36	80	24	26
Card Room	—	540	30'x18'	24	30	44	30	40	20	20

*Outdoor Venues

Heritage Ballroom Cargo Door, 9'3"h x 8'1"w. Grand Ballroom Cargo Door, 7'3"h x 8'7"w. Support services: Floral, Southern Audio Visual (SAV) and PR.

Meeting room capacities were determined by the use of the "Arranger & Comfort Calculator," a standardized meeting room capacity measurement system used by Meeting Professionals International. Banquet capacities are based on 60" rounds, 8 per table; 72" rounds, 10 per table.

Notes

A prestigious escape

The Omni Grove Park Inn is located in the Blue Ridge Mountains of western North Carolina, just to the north of Asheville. The resort rests upon 160 beautiful acres of park land that offer championship-caliber golf and an abundance of other outdoor attractions.

- 2.5 miles from downtown Asheville, where guests will discover museums, theaters and a broad array of restaurants and shops
- 3 miles from the scenic Blue Ridge Parkway
- 3 miles from the Biltmore Estate
- 17 miles and 20 minutes away from Asheville, NC Regional Airport (AVL)
- 65 miles and 75 scenic minutes away from Greenville-Spartanburg, SC International Airport (GSP)
- 120 miles and 2 hours away from Charlotte, NC International Airport (CLT)



OMNI  HOTELS & RESORTS
the grove park inn

866-474-6110 • groveparkinn.com

Omni Grove Park Inn • 290 Macon Avenue • Asheville, NC 28804