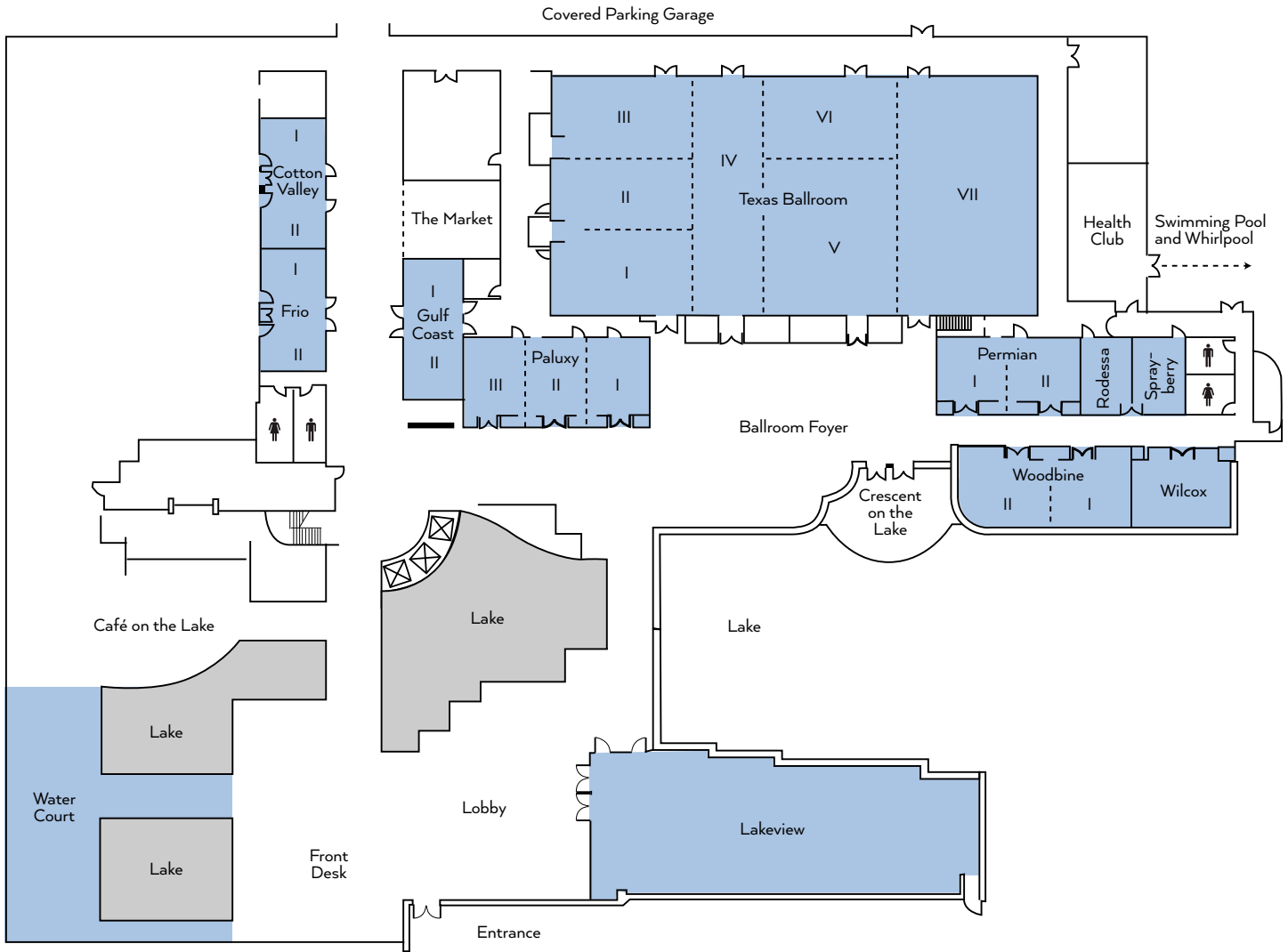


LOBBY LEVEL



OMNI HOUSTON HOTEL AT WESTSIDE | MEETING ROOMS

	SQUARE FOOTAGE	DIMENSIONS	CEILING HEIGHT	PORTABLE WALLS	THEATER	CLASSROOM 18"	BANQUET ROUNDS	RECEPTION	CONFERENCE
LOBBY LEVEL									
TEXAS BALLROOM	9,800	140' X 70'	16'	YES	928	698	710	1,200	—
TEXAS BALLROOM I	936	40' X 23'4"	16'	YES	80	50	50	100	30
TEXAS BALLROOM II	936	40' X 23'4"	16'	YES	80	50	50	100	30
TEXAS BALLROOM III	936	40' X 23'4"	16'	YES	80	50	50	100	30
TEXAS BALLROOM IV (HALLWAY)	1,400	—	—	—	—	—	—	—	—
TEXAS BALLROOM V	1,872	40' X 46'8"	16'	YES	153	100	90	200	36
TEXAS BALLROOM VI	936	40' X 23'4"	16'	YES	102	50	50	100	30
TEXAS BALLROOM I-III OR V-VI OR VII	2,800	40' X 70'	16'	YES	234	150	150	350	60
TEXAS BALLROOM FOYER	4,600	—	—	NO	—	—	—	484	—
TEXAS BALLROOM I-IV OR IV-VI	4,200	60' X 70'	16'	YES	312	210	240	400	—
TEXAS BALLROOM V-VII	5,600	80' X 70'	16'	YES	480	351	300	425	—
TEXAS BALLROOM I-VI OR IV-VII	7,000	100' X 70'	16'	YES	640	432	390	350	—
COTTON VALLEY	598	17'6" X 34	10'	YES	46	30	32	50	24
COTTON VALLEY I	299	17'6" X 17"	10'	YES	22	12	16	30	12
COTTON VALLEY II	299	17'6" X 17'	10'	YES	22	12	16	20	12
FRIO	722	17'6" X 41"	10'	YES	57	36	40	50	30
FRIO I	405	17'6" X 23'	10'	YES	32	15	24	30	18
FRIO II	317	17'6" X 18'	10'	YES	24	12	16	20	12
GULF COAST	782	17' X 46'	10'	YES	70	42	50	80	30
GULF COAST I	340	17' X 20'	10'	YES	25	12	16	40	12
GULF COAST II	442	17' X 26'	10'	YES	32	18	24	30	18
PALUXY	1,296	24' X 54'	10'	YES	117	76	90	135	48
PALUXY I	432	24' X 18'	10'	YES	45	18	24	40	14
PALUXY II	432	24' X 18'	10'	YES	46	18	24	40	14
PALUXY III	432	24' X 18'	10'	YES	46	18	24	40	14
PERMIAN	800	20' X 40'	10'	YES	68	36	40	70	30
PERMIAN I	400	20' X 20'	10'	YES	27	18	20	30	12
PERMIAN II	400	20' X 20'	10'	YES	26	15	20	30	12
RODESSA	300	15' X 20'	10'	NO	—	—	—	—	10
SPRAYBERRY	300	15' X 20'	10'	NO	—	—	—	—	8
WOODBINE	1,084	20'6" X 53'	10'	YES	94	48	60	116	36
WOODBINE I	486	20'6" X 23'6"	10'	YES	38	21	24	30	18
WOODBINE II	610	20'6" X 29'6"	10'	YES	46	27	32	60	12
WILCOX	597	20'6" X 29'	10'	NO	48	24	32	35	18
LAKEVIEW	2,450	—	12'	NO	147	90	140	250	36
WATER COURT	3,358	—	12'	NO	—	—	120	180	—

Meeting room capacities were determined by use of the Arranger & Comfort Calculator, a standardized meeting room capacity measurement system used by Meeting Professionals International. Banquet capacities are based on 60" rounds, 8 per table and 72" rounds, 10 per table.