

Meetings & Event Guide.

OMNI SEVERIN HOTEL



OMNI

SEVERIN



Beaux Arts Gem in downtown INDIANAPOLIS.

Omni Severin Hotel stands as a cherished landmark in the Wholesale District of downtown Indianapolis. Discover our newly renovated 424 guest rooms and suites, where contemporary comforts blend seamlessly with Art Deco-inspired design details. Take a refreshing dip in the indoor pool, or unwind at Bar Cardinale, savoring expertly crafted cocktails and delicious bites.

Situated just 15 minutes from Indianapolis International Airport, Omni Severin Hotel is conveniently located for corporate events, group meetings and celebrations. Our hotel benefits from 17,000 square feet of meeting and event space and is just one block away from the main entrance of the Indianapolis Convention Center. With sports stadiums, entertainment, historic and cultural attractions nearby, you'll find plenty to enjoy at our downtown Indianapolis hotel.



Indianapolis

highlights

Dynamic Indianapolis captivates visitors with big city attractions. It is home to the famous Indianapolis 500, Brickyard 400 races and the Indianapolis Colts football team. Soak up local culture with musical and theater performances, visit world-class museums or take a stroll by the river in picturesque White River State Park. Indianapolis is also great for shopping and dining, with over 2,000 restaurants to discover across the city.

AIRPORTS

Indianapolis International Airport | 14 miles

ATTRACTIONS

Soldiers and Sailors Monument | 2 blocks

Indiana State Capitol | 3 blocks

White River State Park | 0.8 miles

NCAA Hall of Champions | 1.5 miles

ARTS & CULTURE

Indiana Repertory Theater | 3 blocks

Hilbert Circle Theater (Indianapolis Symphony) | 3 blocks

Indiana State Museum | 5 blocks

Eiteljorg Museum of American Indian and Western Art | 6 blocks

Old National Center | 1 mile

Indianapolis Cultural Trail | 1.1 miles

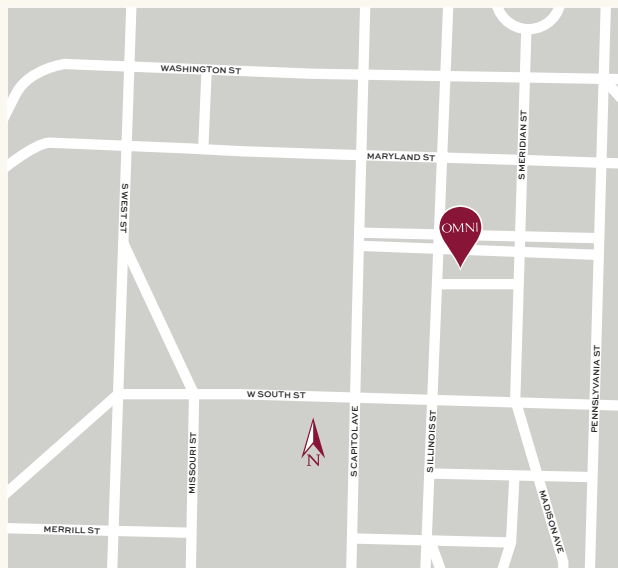
Mass Avenue | 4.6 miles

SPORTS

Lucas Oil Stadium | 0.5 miles

Gainbridge Fieldhouse | 0.5 miles

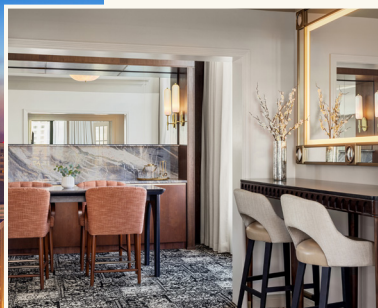
Indianapolis Motor Speedway and Hall of Fame Museum | 8 miles



OMNI SEVERIN HOTEL
40 WEST JACKSON PLACE
INDIANAPOLIS, INDIANA 46225

317.634.6664

OMNIHOTELS.COM/INDIANAPOLIS



about Omni Severin Hotel.

STORIED GRANDEUR IN A DYNAMIC CITY

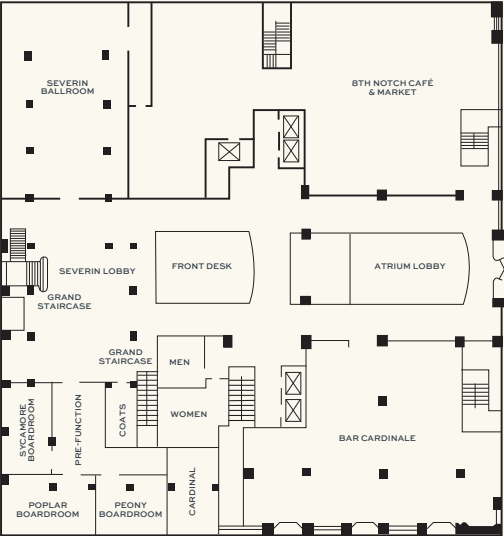
At Omni Severin Hotel, you'll find a beautifully renovated home base for your city adventures. Savor artisanal coffee, full chef curated breakfast, and grab-and-go meals at 8th Notch Cafe & Market, or unwind at Bar Cardinale with expertly crafted cocktails and delightful dishes. The hotel is conveniently located just two blocks from Gainbridge Fieldhouse and Lucas Oil Stadium, making it the perfect location for sports enthusiasts. You'll also find yourself on a street filled with the city's best restaurants, all within a short walk of numerous historic and cultural landmarks.



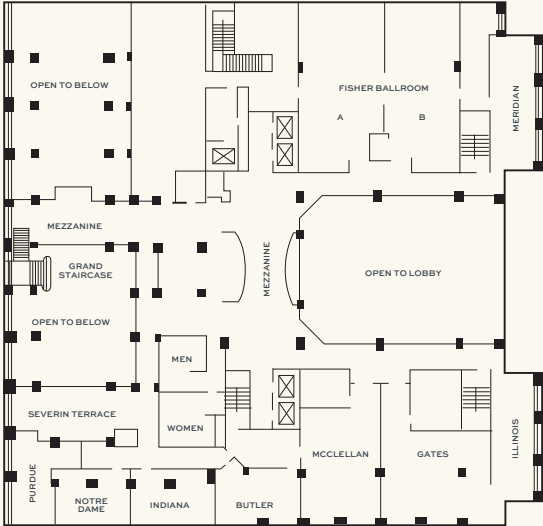
- 424 reimagined guestrooms and suites that beautifully combine the allure of the past with modern amenities, featuring city views
- 17,000 square feet of flexible meeting, event, celebration and pre-function space, including the 3,036 square-foot Jennings Ballroom and 2,440 square-foot Severin Ballroom and Lobby
- Fast Wi-Fi, the latest AV technology and helpful professional services
- Premium catering and menu preparation for corporate events and meetings
- The ideal destination for enjoying crafted cocktails and a diverse selection of delicious dishes, Bar Cardinale beautifully blends artistic design with modern sophistication, incorporating elements inspired by the historic Cardinal train line
- Indulge in chef-curated breakfast alongside artisanal coffees, teas, and specialty drinks. For those on the go, enjoy grab-and-go selections, ensuring you can savor our flavors anytime, anywhere
- Expansive state-of-the-art fitness center and heated indoor pool

Flexible, Next Generation Event & Meeting Space.

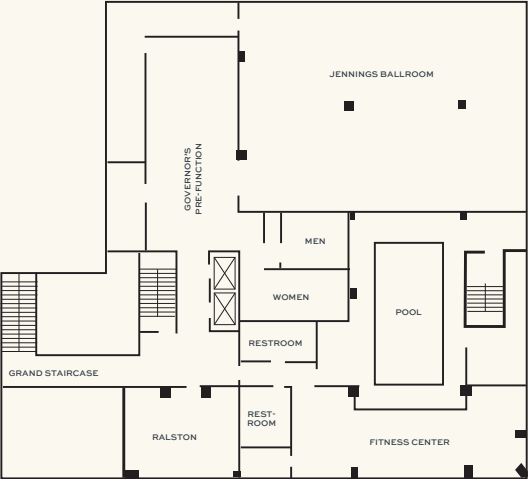
LOBBY LEVEL



MEZZANINE LEVEL



LOWER LEVEL



	SQUARE FOOTAGE	DIMENSIONS LxW	CEILING HEIGHT	PORTABLE WALLS	THEATER	CLASSROOM 18"	BANQUET 60" 72"	RECEPTION	HOLLOW SQUARE	EXHIBITS 8x10 10x10		
LOWER LEVEL												
JENNINGS BALLROOM	3,036	46' x 66'	12'	—	250	150	248 200	316	50	18 15		
GOVERNOR'S PRE-FUNCTION	—	—	—	—	—	—	—	100	—	8 4		
RALSTON	620	20' x 31'	9'	—	30	25	40 30	50	14	6 4		
LOBBY LEVEL												
SEVERIN BALLROOM	2,440	40' x 61'	15'	—	130	100	200 150	253	55	15 12		
SYCAMORE BOARDROOM	405	15' x 27'	9'	—	30	15	30 30	40	12	7 5		
POPLAR BOARDROOM	522	18' x 29'	9'	—	—	—	—	—	—	—		
PEONY BOARDROOM	414	18' x 23'	9'	—	—	—	—	—	—	—		
CARDINAL BOARDROOM	432	16' x 27'	9'	—	—	30	30 30	—	12	7 5		
MAZZANINE LEVEL												
FISHER BALLROOM	2,438	46' x 53'	11'	Yes	250	150	180 140	263	60	15 12		
FISHER A	1,219	23' x 53'	11'	Yes	120	50	90 70	132	30	15 10		
FISHER B	1,219	23' x 53'	11'	Yes	120	50	90 70	132	30	15 10		
GATES	1,116	31' x 36'	9'	—	100	75	80 60	75	30	10 6		
MCCLELLAN	1,014	26' x 39'	9'	—	100	72	80 70	75	26	10 6		
ILLINOIS	640	16' x 40'	9'	—	50	25	35 35	50	10	10 8		
MERIDIAN	640	16' x 40'	9'	—	50	25	35 35	50	12	10 8		
BUTLER	513	19' x 27'	9'	—	35	15	20 20	40	14	6 5		
INDIANA	513	19' x 27'	9'	—	35	15	20 20	40	14	6 3		
NOTRE DAME	450	18' x 25'	9'	—	35	15	20 20	40	12	6 5		
PURDUE	435	15' x 29'	9'	—	35	15	20 20	40	12	6 5		

MEETING ROOM CAPACITIES WERE DETERMINED USING 72" ROUNDS OF 10 (ROUNDS CAPACITY), THREE CHAIRS PER 6'x30" TABLE (U-SHAPE CAPACITY) AND THREE CHAIRS PER 6'x18" TABLE (CLASSROOM CAPACITY) ALLOWING FOR MINIMAL AUDIOVISUAL EQUIPMENT.