

# MEETING & EVENT GUIDE



OMNI  RESORTS  
championsgate | orlando

[OMNIHOTELS.COM/ORLANDO](https://OmniHotels.com/Orlando)



## YOUR BUSINESS IS OUR PLEASURE.

Omni Orlando Resort at ChampionsGate is a rare treat for event attendees. With 248,000 square feet of flexible indoor and outdoor meeting and event space, and an amazing catering and conference services team — every event is nothing short of spectacular.





## MULTIPLE DINING OPTIONS

### ZEN

Enjoy pan-Asian dishes in an authentic setting highlighted by an intimate sushi and sake bar.

### TREVI'S

Trevi's serves delicious meals throughout the day starting with a bountiful breakfast buffet. Family style dining is available.

### TREVI'S TERRAZZA

An outdoor garden terrace with fire pit seating and ambient lighting, serves light bites to full dinner with a full bar including a selection of sangria.

### DAVID'S CLUB

Enjoy the spirited environment and spectacular resort views while you dine on mouthwatering steaks and innovative cuisine at our upscale sports bar and grill.

### PIPER'S GRILLE AND CHAMPIONSGATE LOUNGE

Sample our selection of healthy and hearty breakfast options, sandwiches, salads and entrées at lunch or throughout the afternoon for golfers who want to enjoy a refreshing break.

### CROC'S POOL BAR & GRILLE

Enjoy a delicious meal crafted from regional ingredients or sip on one of our signature cocktails while overlooking our stunning pools.

### LOBBY BAR

Relax with a glass of wine or refreshing cocktail while you catch up with friends and colleagues.

### BROADWAY DELI | MORSEL'S

Choose from a variety of salads, classic deli sandwiches or your favorite beverage on-the-go at Broadway Deli or Morsel's.

### MARKET PLACE

The Market Place is a gourmet café dedicated to unique local products, healthy options and grab-and-go sandwiches and salads.

## CHAMPIONSHIP GOLF

### WALK-OUT GOLF

Play two championship 18-hole golf courses designed by accomplished architect and golfer, Greg Norman, and a lighted nine-hole, par 3 golf course.

## SPLASH

### LAZY RIVER | KID'S POOL | WAVE POOL | FAMILY POOL

From large pools and a lazy river to water slides and Orlando's only resort wave pool, there's a place for everyone to enjoy.

### ADULT POOL AND PRIVATE CABANAS

Enjoy an atmosphere of comfort and tranquillity at our Adult Pool. Spend the day relaxing in one of 23 luxurious poolside cabanas.

## RELAX

### MOKARA SPA

Our signature spa offers a full range of treatments, from massages and body wraps to manicures, pedicures, facials and full salon services.

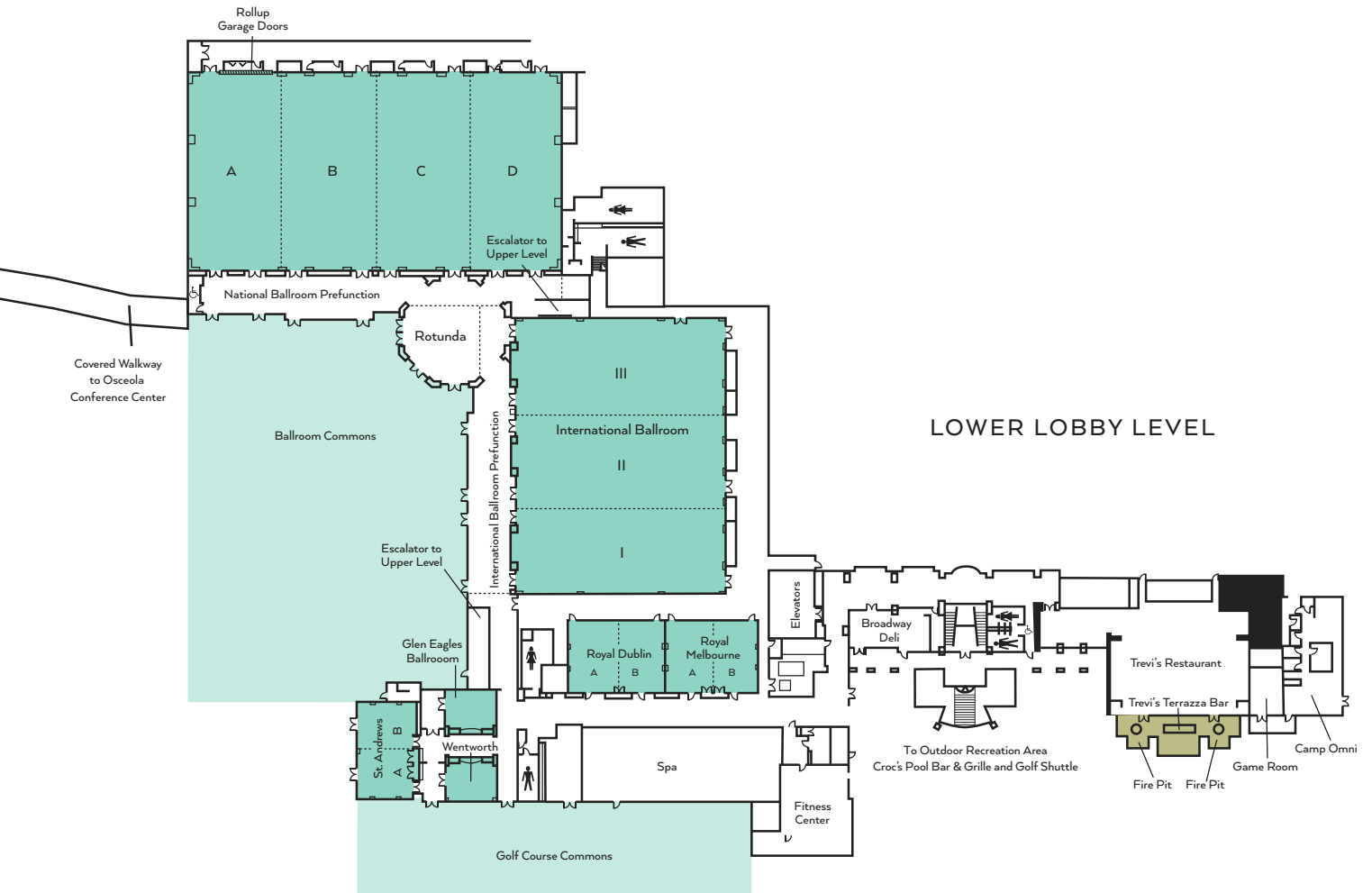
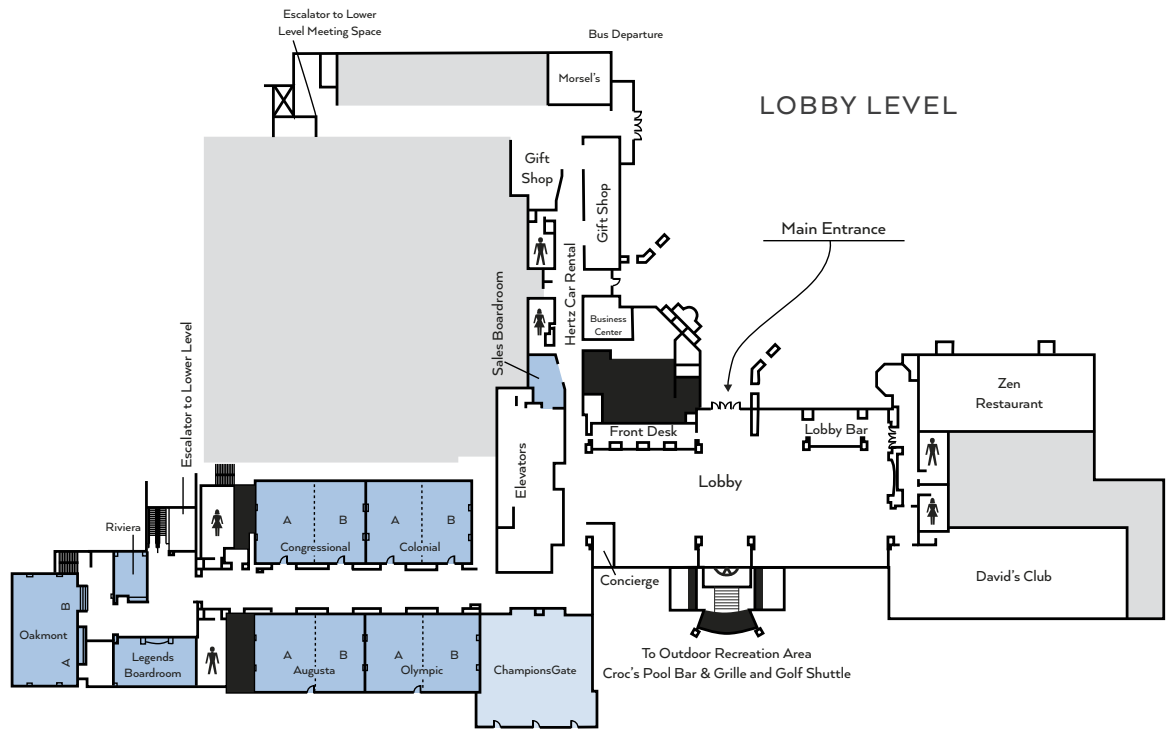
## OMNI ORLANDO RESORT MEETING ROOM FLOOR PLANS

### OSCEOLA COUNTY CONFERENCE CENTER



#### GRAND SALON

Designed for galas and special events, the Grand Salon features a porte-cochère for private arrivals, an expansive new ballroom and a charming terrace. Ideal for a cocktail hour or reception, the terrace has a fireplace, patio space, event gardens, grand event lawn and Celebration Falls, a picturesque waterwall. Ballroom accents include an elaborate, decorative tray ceiling, a dramatic and modern crystal chandelier and floor-to-ceiling windows overlooking the outdoor terrace.



OMNI ORLANDO RESORT MEETING ROOM CAPACITY

	SQUARE FOOTAGE	DIMENSIONS L x W	CEILING HEIGHT	WIN- DOWS	THEATRE STYLE	CLASSROOM 18" TABLE	CRESCENT 72" ROUND	BANQUET 72" ROUND	RECEP- TION	EXHIBITS 8' X 10'	EXHIBITS 10' X 10'	CONFER- ENCE	U-SHAPE	HOLLOW SQUARE
LOBBY LEVEL														
CHAMPIONSGATE OUTDOOR PATIO	2,704	52' x 52'	14'	YES	280	152	126	180	200	—	—	52	60	72
OLYMPIC	1,672	44'5" x 37'4"	14'	YES	140	90	70	100	120	—	—	36	40	48
A, B (INDIVIDUALLY)	836	22'2" x 37'4"	14'	YES	70	45	35	50	60	—	—	18	20	24
AUGUSTA	2,008	54'3" x 37'4"	14'	YES	200	120	91	130	160	—	—	44	48	56
A, B (INDIVIDUALLY)	1,004	26'3.5" x 37'4"	14'	YES	100	60	42	60	80	—	—	22	24	28
LEGENDS BOARDROOM	974	40'1" x 24'3"	14'	YES	—	—	—	—	—	—	—	18	—	—
OAKMONT	1,685	31'2" x 54'	14'	YES	140	100	70	100	140	—	—	36	40	48
A, B (INDIVIDUALLY)	842	31'2" x 27'	14'	YES	70	50	35	50	70	—	—	18	20	24
RIVIERA	330	15' x 23'	14'	YES	20	—	—	—	—	—	—	10	—	—
CONGRESSIONAL	2,035	51' x 39'9"	14'	NO	200	120	91	130	—	—	—	—	—	—
A, B (INDIVIDUALLY)	1,017	25'6" x 39'9"	14'	NO	100	60	42	60	80	—	—	22	24	48
COLONIAL	2,035	51' x 39'9"	14'	NO	200	120	91	130	160	—	—	44	48	56
A, B (INDIVIDUALLY)	1,017	25'6" x 39'9"	14'	NO	100	60	42	60	80	—	—	22	24	28
PRE-FUNCTION	4,322	—	—	—	—	—	—	—	150	—	—	—	—	—
SALES BOARDROOM	300	—	—	—	—	—	—	—	—	—	—	6	—	—
LOWER LOBBY LEVEL														
NATIONAL BALLROOM	24,631	215'5" x 114'3"	20'	NO	2,600	1,500	1,120	1,600	2,600	156	125	—	—	—
A, B, C, D (INDIVIDUALLY)	6,157	53' x 114'3"	20'	NO	650	400	280	400	650	40	32	—	—	—
A, B, C, D (ANY TWO SECTIONS)	12,314	106' x 114'3"	20'	NO	1,350	800	560	800	1,350	80	64	—	—	—
A, B, C, D (ANY THREE SECTIONS)	18,471	159' x 114'3"	20'	NO	2,000	950	840	1,200	2,000	120	96	—	—	—
NATIONAL PRE-FUNCTION	4,600	200' x 23'	14'	YES	—	—	—	—	480	—	—	—	—	—
INTERNATIONAL BALLROOM	19,315	121'4" x 159'11"	20'	NO	2,000	1,150	945	1,350	2,000	121	97	—	—	—
I, II, III (INDIVIDUALLY)	6,438	121'4" x 53'	20'	NO	725	425	315	450	725	41	33	—	—	—
I, II, III (ANY TWO SECTIONS)	12,876	121'4" x 106'	20'	NO	1,375	850	630	900	1,375	82	66	—	—	—
INTERNATIONAL PRE-FUNCTION	3,749	163' x 23'	14'	YES	—	—	—	—	380	—	—	—	—	—
ROTUNDA	1,617	44' x 42'	18'	YES	—	—	—	—	250	—	—	—	—	—
BALLROOM COMMONS OUTDOOR AREA	16,200	—	—	—	—	—	—	680	1,200	—	—	—	—	—
WENTWORTH	588	28' x 21'	12'	YES	50	32	21	30	40	—	—	20	20	24
ST. ANDREWS	1,685	31'2" x 54'	12'	YES	140	100	70	100	140	—	—	36	40	48
A, B (INDIVIDUALLY)	842	31'2" x 27'	12'	YES	70	50	35	50	70	—	—	18	20	24
GLEN EAGLES BOARDROOM	569	26'7" x 21'3"	12'	YES	—	—	—	—	—	—	—	12	—	—
ROYAL DUBLIN	2,111	52'9" x 39'9"	12'	NO	200	120	84	120	160	—	—	44	48	56
A, B (INDIVIDUALLY)	1,055	26'4" x 39'9"	12'	NO	100	60	42	60	80	—	—	22	24	28
ROYAL MELBOURNE	2,035	51' x 39'9"	12'	NO	200	120	84	120	160	—	—	44	48	56
A, B (INDIVIDUALLY)	1,017	25'6" x 39'9"	12'	NO	100	60	42	60	80	—	—	22	24	28
GOLF COURSE COMMONS OUTDOOR PATIO	30,000	—	—	—	—	—	—	1,400	2,000	—	—	—	—	—
OTHER INDOOR AND OUTDOOR FUNCTION SPACE														
CHAMPIONS HALL CHAMPIONSGATE GOLF CLUB	2,516	68'4" x 37'2"	—	YES	220	171	—	150	200	15	12	—	—	—
CELEBRATIONS FALLS	7,800	150' X 52'	—	—	—	—	—	240	350	—	—	—	—	—
MEETING SUITES 1-5 (EACH)	884	17' x 52'	9'	YES	40	30	28	40	35	—	—	20	20	18
ADULT POOL	3,500	—	—	—	—	—	—	—	200	—	—	—	—	—
FAMILY POOL	7,500	—	—	—	—	—	—	—	500	—	—	—	—	—
WAVE POOL	3,500	—	—	—	—	—	—	—	200	—	—	—	—	—
KID'S POOL AREA	4,500	—	—	—	—	—	—	—	400	—	—	—	—	—
FIRE PIT	750	—	—	—	—	—	—	—	75	—	—	—	—	—
TREVI'S TERRAZZA	1,500	—	—	—	—	—	—	50	75	—	—	—	—	—
MARKET PLACE	2,200	—	—	—	—	—	—	—	150	—	—	—	—	—

OMNI ORLANDO RESORT MEETING ROOM CAPACITY

	SQUARE FOOTAGE	DIMENSIONS L x W	CEILING HEIGHT	WIN- DOWS	THEATRE STYLE	CLASSROOM 18" TABLE	CRESCENT 72" ROUND	BANQUET 72" ROUND	RECEP- TION	EXHIBITS 8' X 10'	EXHIBITS 10' X 10'	CONFER- ENCE	U-SHAPE	HOLLOW SQUARE
OSCEOLA COUNTY CONFERENCE CENTER														
OSCEOLA BALLROOM	28,800	240' x 120'	18'	NO	3,200	2,000	1,400	2,000	3,000	180	150	—	—	—
A, B (INDIVIDUALLY)	3,600	60' x 60'	18'	NO	400	250	175	250	360	25	20	120	100	85
A, B (COMBINED)	7,200	60' x 120'	18'	NO	800	500	350	500	720	45	35	240	200	175
A, B, C, D	21,600	120' x 180'	18'	NO	2,400	1,500	1,050	1,500	2,200	135	110	—	—	—
C, D, E (INDIVIDUALLY)	7,200	60' x 120'	18'	NO	800	500	350	500	720	45	35	240	200	175
C, D, E (ANY TWO SECTIONS)	14,400	120' x 120'	18'	NO	1,600	1,000	700	1,000	1,500	90	70	—	—	—
C, D, E (ANY THREE SECTIONS)	21,600	120' x 180'	18'	NO	2,400	1,500	1,050	1,500	2,200	135	110	—	—	—
PREFUNCTION	9,427	228'x32'	16'	YES	—	—	—	—	850	—	—	—	—	—
KISSIMMEE	1,944	60' x 38'5"	13'	YES	220	80	84	170	195	12	10	65	60	50
A, B (INDIVIDUALLY)	972	30' x 38'5"	13'	YES	110	40	42	80	100	6	5	30	30	25
ST. CLOUD	1,944	60' x 38'5"	13'	YES	220	80	84	170	195	12	10	65	60	50
A, B (INDIVIDUALLY)	972	30' x 38'5"	13'	YES	110	40	42	80	100	6	5	30	30	25
CELEBRATION	2,921	61' x 43'	16'	YES	330	120	140	250	300	18	15	100	90	75
A, B (INDIVIDUALLY)	1,460	30'5" x 43'	16'	YES	165	60	70	120	150	9	10	50	40	35
HARMONY	1,944	60' x 38'5"	13'	YES	220	80	84	160	195	12	10	65	60	50
A, B (INDIVIDUALLY)	972	30' x 38'5"	13'	YES	110	40	42	60	100	6	5	30	30	25
ALLENDALE	3,850	55'x70'	12'	YES	455	216	168	240	300	21	21	54	63	78
A, B (INDIVIDUALLY)	1,925	55'x35'	12'	YES	168	120	84	120	150	10	10	42	45	54
HERITAGE PARK	2,460	41'x60'	12'	YES	243	144	126	150	200	—	—	48	54	60
A, B, C (INDIVIDUALLY)	820	41'x20'	12'	YES	71	49	42	30	40	—	—	24	24	36
A, B, C (ANY TWO SECTIONS)	1,640	41'x40'	12'	YES	163	108	84	80	100	—	—	32	27	44
LANIER	1,904	34'x56'	12'	NO	191	129	84	130	100	—	—	48	48	54
A, B (INDIVIDUALLY)	952	34'x28'	12'	YES	108	75	42	60	75	—	—	24	30	30
SEMINOLE	1,806	42'x43'	12'	NO	216	126	84	120	175	—	—	40	42	48
A, B (INDIVIDUALLY)	903	21'x43'	12'	YES	108	63	42	60	75	—	—	32	32	42
POINCIANA	2,460	41'x60'	12'	YES	243	126	126	150	200	—	—	48	54	60
A, B, C (INDIVIDUALLY)	820	41'x20'	12'	YES	45	42	42	30	40	—	—	24	24	36
A, B, C (ANY TWO SECTIONS)	1640	41'x40'	12'	YES	144	84	84	80	100	—	—	32	27	44
PARTIN	1,904	34'x56'	12'	NO	154	102	84	100	100	—	—	40	45	48
A, B (INDIVIDUALLY)	952	34'x28'	12'	NO	84	50	42	50	75	—	—	24	27	36
GRAND SALON	6,480	80'x81'	16'7"	YES	800	400	294	430	500	—	—	66	81	102
TERRACE	—	—	—	—	—	—	—	—	—	—	—	—	—	—
PATIO	8,246	108'x90'					480		550					
OSCEOLA EVENT LAWN AND FLEX LAWN	33,300	185'x180'	—	—	—	—	1,540	—	1,800	—	—	—	—	—

Meeting room capacities are determined by the use of the "Arranger & Comfort Calculator," a standardized meeting room capacity measurement system used by Meeting Professionals International. 66" banquet capacities are based on 10 persons per table.



**ACCOMMODATIONS**  
The resort features 720 deluxe and premier guest rooms and suites, 49 luxury two- and three-bedroom villas and our all-new Sunset Lodge and Suites with 93 upscale accommodations comprised of studio suites and connecting guest rooms.

## ORLANDO HIGHLIGHTS

Enjoy the luxury of staying close to the city's attractions without the distractions. Located in the master-planned community of ChampionsGate, Omni Orlando Resort is just minutes from all Orlando has to offer.

## ATTRACTIONS

Walt Disney World® Resort | 6 mi.  
Old Town | 9 mi.  
Fun Spot America | 10 mi.  
SeaWorld Orlando | 14 mi.  
Universal Studios | 19 mi.  
The Coca-Cola Orlando Eye | 18 mi.

## ENTERTAINMENT

Cinépolis IMAX Theaters | 7 mi.  
AMC Disney Springs | 13 mi.  
Camping World Stadium | 26 mi.  
Amway Center | 27 mi.  
Dr. Phillips Center for the Performing Arts | 28 mi.  
Universal CityWalk | 19 mi.

## RECREATION

Orlando Tree Trek | 5 mi.  
Gatorland | 18 mi.  
Wild Florida Airboats &  
Gator Park | 42 mi.

## SHOPPING

Celebration Town Center | 8 mi.  
Disney Springs® Area | 10 mi.  
Orlando Premium Outlets | 12 mi.  
Pointe Orlando | 18 mi.

## TRAVEL

Orlando International Airport | 26 mi.  
Tampa International Airport | 58 mi.

**OMNI ORLANDO RESORT  
AT CHAMPIONSGATE**  
1500 MASTERS BOULEVARD  
CHAMPIONSGATE, FLORIDA 33896  
407-238-6526  
[OMNIHOTELS.COM/ORLANDO](http://OMNIHOTELS.COM/ORLANDO)



DOWNTOWN ORLANDO SKYLINE



DISNEY SPRINGS®

