

Meetings & Event Guide.

OMNI SCOTTSDALE RESORT & SPA
AT MONTELUCCIA



OMNI

SCOTTSDALE
MONTELUCCIA

Table *of* Contents

MEETINGS & EVENTS OVERVIEW	01
ABOUT.....	02
EVENT VENUES	04
HIGHLIGHTS.....	07



At the base of the mountain. AT THE SUMMIT OF SERENITY.

Events at Omni Scottsdale Resort & Spa at Montelucia embody Scottsdale's elevated lifestyle. Surrounded by Spanish architecture, inspired by the rich heritage of Andalusia in Southern Spain, guests are immediately transported to a Spanish oasis in the heart of the desert with Camelback Mountain as the backdrop. Located in the heart of Scottsdale, your guests will enjoy access to over 200 lush golf courses, the charm of Old Town Scottsdale, and the natural beauty of the Sonoran Desert.

Omni Scottsdale Resort & Spa offers 102,000 square feet of flexible indoor/outdoor conference and event space. 10 distinct outdoor spaces create ample opportunities to take advantage of Scottsdale's beautiful weather. Alternatively, your guest can enjoy recently renovated indoor space including 2 stately ballrooms. Our 16 meeting rooms feature sleek and tech-forward backdrops for your next event or gathering.

Our 16 dynamic meeting rooms feature sleek and tech-forward event spaces perfect for any size group. The Omni Scottsdale Resort & Spa at Montelucia specializes in pairing ideal meeting venues with impeccable service. From exclusive board meetings to corporate-wide celebrations, we ensure all your events are memorable. On-site group activities, group spa services, and dedicated event staff are among the many services provided to your group by our team.



about
Omni Scottsdale Resort
& Spa at Montelucia.

FIND INSPIRATION IN RELAXATION

A unique blend of local desert serenity and Southern Spanish influence, Omni Scottsdale Resort & Spa at Montelucia provides a stay far from ordinary. From 5 craveable dining destinations to the unmatched enchantment of Joya Spa, your guests will feel pampered and comforted at every turn. Workout classes and meditation sessions will keep attendees centered, and 330 days of sun will turn a work trip into a relaxing getaway.



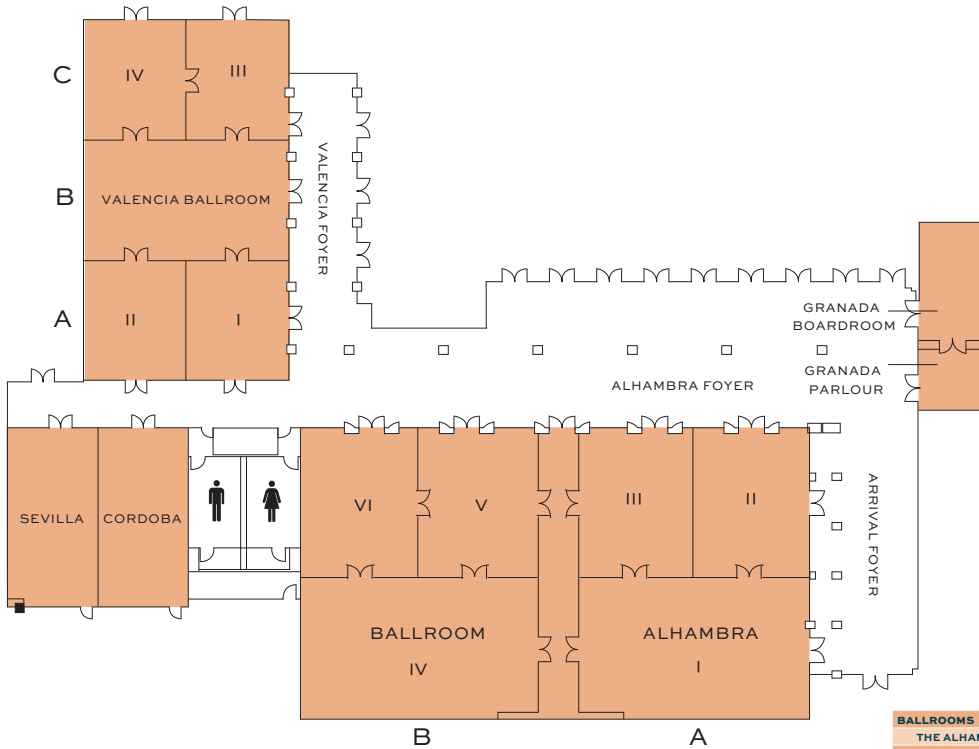


An event to remember.

- 293 airy guest rooms and suites, recently refreshed with Southern Spanish touches like sophisticated textiles
- Approximately 25,000 square feet of flexible indoor meeting, event and pre-function space; 77,000 square feet of patios, lawns and terraces
- 4 sparkling pools with stunning views of Camelback Mountain
- 5 unique dining experiences
- Joya Spa, featuring rejuvenating spa treatments along with hair and nail services. Visit the private Joya Terrace pool only accessible to spa guests
- Joya Motion Studio, including a 24-hour fitness center and group classes such as yoga, PILATES, barre and HIIT
- Guided hikes of Camelback Mountain, complimentary bike rentals and 3 onsite boutiques

Flexible, Next Generation Event & Meeting Space.

BALLROOMS



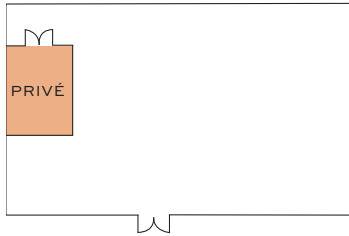
	SQUARE FOOTAGE	DIMENSIONS L x W	CEILING HEIGHT	BANQUET	THEATRE	CLASSROOM	CONFERENCE	HOLLOW SQUARE	U-SHAPE
BALLROOMS									
THE ALHAMBRA BALLROOM	9,216	72' X 128'	16'	600	1,000	567	120	178	142
ARRIVAL FOYER (ALHAMBRA FOYER WEST)	2,548	26' X 98'	16'	140	—	—	—	—	—
ALHAMBRA FOYER	4,488	34' X 132'	16'	80	—	—	—	—	—
ALHAMBRA A	4,104	57' X 72'	16'	300	450	270	66	104	82
ALHAMBRA SALON I	2,052	57' X 36'	16'	120	200	120	40	48	38
ALHAMBRA SALON II	1,008	28' X 36'	16'	60	100	60	30	24	26
ALHAMBRA SALON III	1,008	28' X 36'	16'	60	100	60	30	24	26
ALHAMBRA B	4,104	57' X 72'	16'	300	450	270	66	104	82
ALHAMBRA SALON IV	2,052	57' X 36'	16'	120	200	120	40	48	38
ALHAMBRA SALON V	1,008	28' X 36'	16'	60	100	60	30	24	26
ALHAMBRA SALON VI	1,008	28' X 36'	16'	60	100	60	30	24	26
THE VALENCIA BALLROOM	4,590	51' X 90'	12'	320	498	315	84	108	86
VALENCIA FOYER	854	16' X 54'	—	—	—	—	—	—	—
VALENCIA A	1,530	51' X 30'	12'	80	166	100	30	30	30
VALENCIA SALON I	750	25' X 30'	12'	60	83	46	16	20	20
VALENCIA SALON II	750	25' X 30'	12'	60	83	46	16	20	20
VALENCIA B	1,530	51' X 30'	12'	80	166	100	30	30	30
VALENCIA C	1,530	51' X 30'	12'	80	166	100	30	30	30
VALENCIA SALON III	750	25' X 30'	12'	60	83	46	16	20	20
VALENCIA SALON IV	750	25' X 30'	12'	60	83	46	16	20	20

Meeting room capacities were determined using 72" rounds of 10 (Rounds Capacity), three chairs per 6'x30" table (U-Shape Capacity) and three chairs per 6'x18" table (Classroom Capacity) allowing for minimal audiovisual equipment.

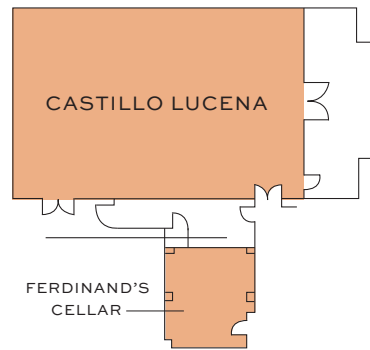
Flexible, Next Generation Event & Meeting Space.

INDOOR VENUES

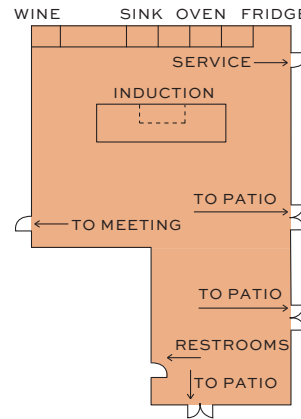
PRADO



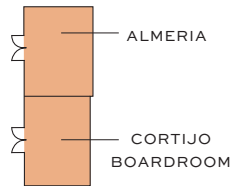
CASTILLO LUCENA



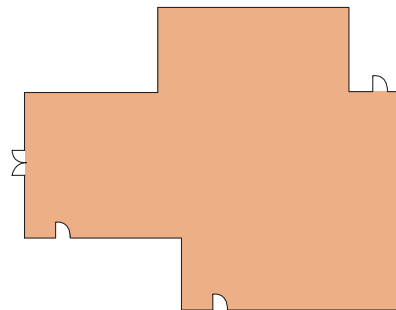
CHEF'S KITCHEN



BOARDROOMS



CHEF'S KITCHEN STUDIO



	SQUARE FOOTAGE	DIMENSIONS L x W	CEILING HEIGHT	BANQUET	THEATRE	CLASSROOM	CONFERENCE	HOLLOW SQUARE	U-SHAPE
INDOOR VENUES									
CASTILLO LUCENA	2,480	40' X 62'	17'	150	266	165	58	50	42
CORDOBA	756	21' X 36'	12'	50	83	40	20	18	16
SEVILLA	756	21' X 36'	12'	50	83	40	20	18	16
GRANADA BOARDROOM	464	16' X 29'	12'	—	—	—	12	—	—
GRANADA PARLOUR	244	16' X 24'	10'	—	—	—	5	—	—
PRIVE - PRIVATE DINING #1	253	11' X 23'	12'	—	—	—	12	—	—
FERDINAND'S CELLAR - PRIVATE DINING #2	255	15' X 17'	12'	—	—	—	12	—	—
CORTIJO	460	23' X 20'	8'	40	40	24	10	14	10
ALMERIA	572	26' X 22'	8'	40	40	24	16	18	16
CHEFS KITCHEN	520	—	8	24	30	—	20	—	—
CHEF'S STUDIO	680	—	8	60	60	36	24	24	24

Meeting room capacities were determined using 72" rounds of 10 (Rounds Capacity), three chairs per 6'x30" table (U-Shape Capacity) and three chairs per 6'x18" table (Classroom Capacity) allowing for minimal audiovisual equipment.

Flexible, Next Generation Event & Meeting Space.

OUTDOOR VENUES

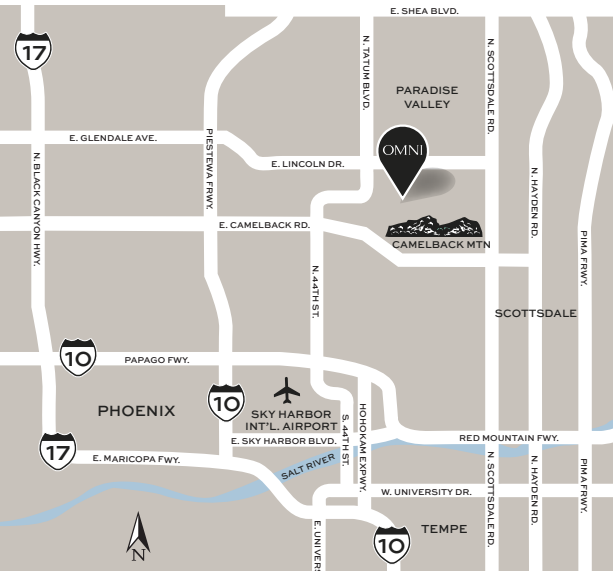
CHEF'S KITCHEN PATIO



	SQUARE FOOTAGE	DIMENSIONS L x W	CEILING HEIGHT	BANQUET	THEATRE	CLASSROOM	CONFERENCE	HOLLOW SQUARE	U-SHAPE
OUTDOOR VENUES									
ALHAMBRA BALLROOM TERRACE	3,400	147' X 45'	—	150	—	—	—	—	—
VALENCIA LAWN	6,500	98' X 89'	—	400	—	—	—	—	—
CAMELBACK SUITE LAWN	2,700	80' X 50'	—	100	—	—	—	—	—
ANDALUSIAN SUITE PLAZA	1,500	62' X 45'	—	60	—	—	—	—	—
OASIS POOL PLAZA	8,500	109' X 114'	—	200	—	—	—	—	—
BOCCE GARDEN	4,600	60' X 100'	—	60	—	—	—	—	—
THE PAVILLION (PARKING)	32,793	185' X 184'	—	600	—	—	—	—	—
KASBAH PATIO	3,400	—	—	150	—	—	—	—	—
CORTIJO PLAZA	3,416	—	—	150	—	—	—	—	—
CHEF'S KITCHEN PATIO	1,000	—	—	90	98	—	40	46	40



Meeting room capacities were determined using 72" rounds of 10 (Rounds Capacity), three chairs per 6'x30" table (U-Shape Capacity) and three chairs per 6'x18" table (Classroom Capacity) allowing for minimal audiovisual equipment.



OMNI SCOTTSDALE RESORT & SPA AT MONTELUCIA
4949 E. LINCOLN DRIVE,
SCOTTSDALE, ARIZONA 85253
OMNIHOTELS.COM/MONTELUCIA

Scottsdale

highlights.

The Scottsdale community has perfected luxury desert living. In the surrounding Sonoran Desert, you'll discover a stunning desertscape of otherworldly rock formations, mountains and colorful cacti. Within the city itself, you can tour the boutique storefronts and art galleries along the narrow streets of Old Town. Take advantage of 330 days of annual sun with over 200 golf courses to choose from, and visit Frank Lloyd Wright's famed winter home and studio, Taliesin West.

AIRPORTS

Phoenix Sky Harbor International Airport (PHX) | 16 min
 Scottsdale Airport (SCF) | 18 min

ATTRACTIONS

Camelback Mountain | 4 min to trailhead
 Phoenix Mountain Piestewa Peak | 10 min to trailhead
 Old Town Scottsdale | 11 min
 Grayhawk Golf Course | 25 min
 Scottsdale Fashion Square | 12 min
 Desert Botanical Garden | 16 min
 Taliesin West | 23 min
 McDowell Sonoran Preserve | 25 min

ARTS & CULTURE

Western Spirit: Scottsdale's Museum of the West | 12 min
 Scottsdale Center for the Performing Arts | 13 min
 Scottsdale Museum of Contemporary Art | 14 min
 Celebrity Theatre | 16 min
 Phoenix Art Museum | 18 min





OMNI SCOTTSDALE
MONTELCUCIA

OMNIHOTELS.COM/MONTELCUCIA
PHXRST.LEADS@OMNIHOTELS.COM
480.627.3150