

Meetings & Event Guide.

OMNI RANCHO LAS PALMAS
RESORT & SPA

EXPERIENCES MATTER HERE



OMNI
RANCHO
LAS PALMAS

Table *of* Contents

MEETINGS & EVENTS OVERVIEW 01

ABOUT..... 02

EVENT VENUES 04

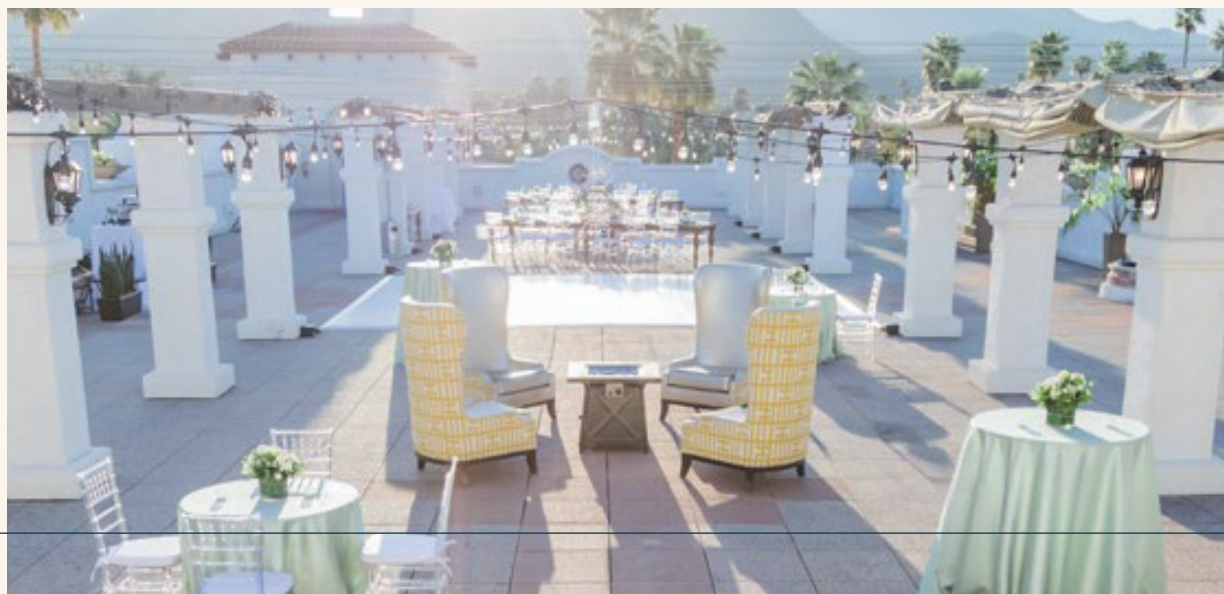
HIGHLIGHTS 07



Meet You IN THE DESERT.

Far from the rush of the every day, Omni Rancho Las Palmas Resort & Spa fosters innovation and relaxation. This recently renovated resort takes design inspiration from the region's Spanish Colonial heritage, set against a backdrop of stunning mountains and swaying palms in the beautiful Coachella Valley.

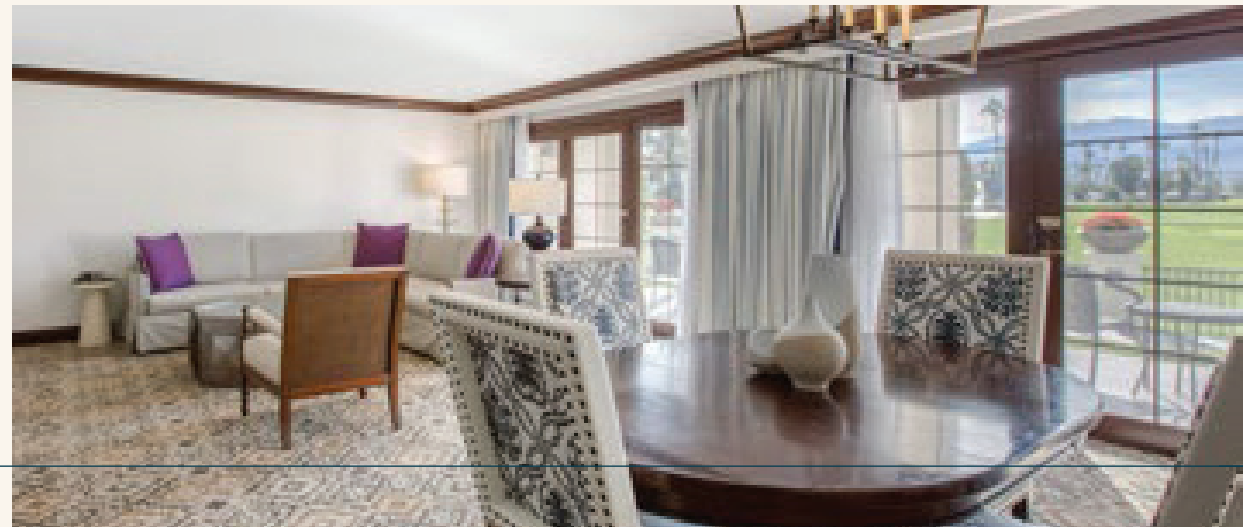
Omni Rancho Las Palmas was designed for indoor/outdoor meetings, conferences, weddings and events of all types. Nearly 75% of our 50,000 square feet of event space is outside, taking advantage of the natural beauty and glorious weather of this unique landscape. Just 15 minutes from Palm Springs Airport and a 2.5 hr drive from Los Angeles, your guests will appreciate getting away from it all while staying within reach.



about
Omni Rancho Las
Palmas Resort & Spa.

A UNIQUE DESERT ESCAPE

The Omni Rancho Las Palmas Resort & Spa offers a tranquil retreat centrally located in the heart of Rancho Mirage, just minutes from Palm Springs. With premium golf courses, a serene spa, pools for adults and families and so much more, this engaging resort is a welcome getaway for all types of travelers. Enjoy a slower pace of life amid the abundant sunshine and swaying palms of this desert oasis.



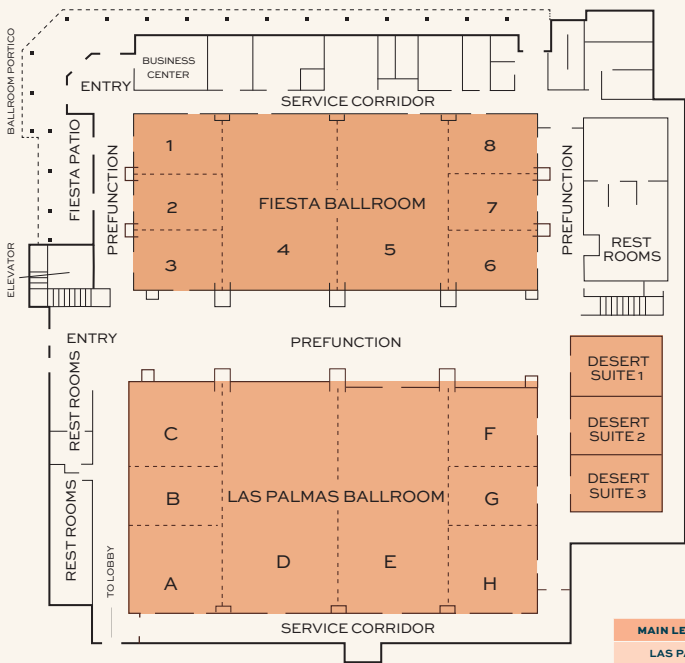


An event to remember

- 444 airy guest rooms, including 22 luxurious suites; each room offers French doors that open on private patios or balconies
- Approximately 50,000 square feet of flexible meeting, event and pre-function space, including nearly 54,000 square feet of outdoor terraces and lawns
- On-site audiovisual equipment services offering the latest technology and Wi-Fi internet access
- Three nine-hole golf courses provide a memorable challenge for players of all skill levels, with six lakes and infamous Ted Robinson bunkering
- Two sparkling pools: Conchilla Valley Pool, an all-ages pool with shaded splash pad, and adults-only Azure Pool for a quiet escape
- Splashtopia, a family-friendly water park with two 100-foot water slides, lazy river, sandy beach, fountains and sprinklers
- Six unique dining experiences including bluEmber's inventive New American cuisine highlighting local ingredients, casual eatery Palms Café, a family-friendly sports bar offering elevated comfort food, a warm golf course clubhouse and two pool-side grills
- Spa Las Palmas, a 20,000 square foot oasis with sauna, steam room, hot tub, pool and over 50 body and facial treatments
- 25 tennis courts, including eight lighted courses
- 24-hour fitness center fully equipped with free weights, Peloton®, Cybex and Startrac equipment

Flexible, Next Generation Event & Meeting Space.

MAIN LEVEL

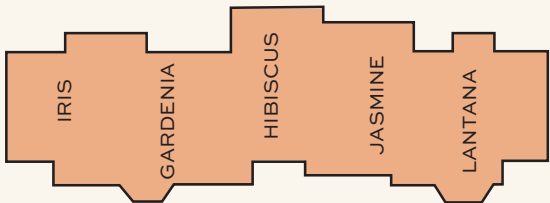


Meeting Room Capacities
Were Determined Using
72" Rounds Of 10 (Rounds
Capacity), Three Chairs Per
6'X30" Table (U-Shape
Capacity) And Three Chairs
Per 6'X18" Table (Classroom
Capacity) Allowing For
Minimal Audiovisual
Equipment.

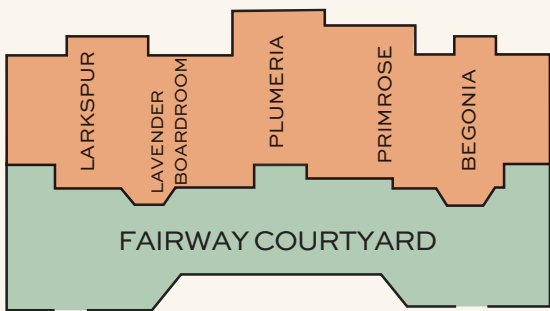
	FLOOR	SQUARE FOOTAGE	DIMENSIONS	CEILING HEIGHT	THEATER	CLASSROOM	CONFERENCE	RECEPTION	BANQUET	U-SHAPE	10 ROUNDS	12 ROUNDS
MAIN LEVEL												
LAS PALMAS BALLROOM A-H	1	12,900	86'X150'	17'	1,200	800	—	1,800	1,100	—	111	91
SALONS A, C, F OR H	1	978	32'X33'	13'	80	60	35	105	60	40	6	5
SALONS B OR G	1	697	22'X33'	13'	50	40	35	70	50	30	5	4
SALONS D OR E	1	3,635	86'X43'	17'	350	225	105	400	280	90	28	25
SALONS A - C OR F - H	1	2,640	86'X33'	13'	210	170	100	300	200	130	20	17
SALONS D & E	1	7,290	86'X86'	17'	800	450	—	800	560	—	56	50
SALONS A - D OR E - H	1	6,450	86'X76'	17'	580	450	—	550	500	—	50	41
FIESTA BALLROOM	1	10,000	66'X152'	17'	800	600	—	1,200	600	—	60	50
SALONS 1, 2, 3, OR 6, 7, 8	1	726	22'X33'	17'	60	40	30	70	50	30	5	4
SALONS 4 OR 5	1	2,838	66'X43'	17'	300	180	—	240	200	—	20	16
SALONS 1 - 3 OR 6 - 8	1	2,178	66'X33'	17'	170	110	—	220	170	80	17	14
SALONS 1 - 4 OR 5 - 8	1	5,000	66'X76'	17'	500	300	—	500	400	—	40	33
DESERT SUITES	1	2,023	66'X33'	—	170	110	80	220	160	60	16	14
DESERT SUITES 1, 2, OR 3	1	704	22'X33'	—	30	25	25	70	50	25	5	4
DESERT SUITES 1 & 2 OR 2 & 3	1	1,408	44'X33'	—	60	50	50	140	100	50	10	—

Flexible, Next Generation Event & Meeting Space.

LOCATED WITHIN THE HOTEL



UPPER LEVEL



LOWER LEVEL

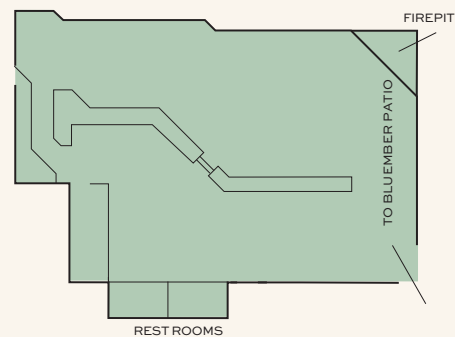
Meeting Room Capacities
Were Determined Using
72" Rounds Of 10 (Rounds
Capacity), Three Chairs Per
6'X30" Table (U-Shape
Capacity) And Three Chairs
Per 6'X18" Table (Classroom
Capacity) Allowing For
Minimal Audiovisual
Equipment.

	FLOOR	SQUARE FOOTAGE	DIMENSIONS	CEILING HEIGHT	THEATER	CLASSROOM	CONFERENCE	RECEPTION	BANQUET	U-SHAPE	10 ROUNDS	12 ROUNDS
FAIRWAY CONFERENCE CENTER												
LARKSPUR	LL	804	17'X27'	—	40	25	30	40	30	25	3	—
LAVENDER BOARDROOM	LL	570	17'X27'	—	40	25	30	40	30	25	3	—
PLUMERIA	LL	560	17'X27'	—	40	25	30	40	30	25	3	—
PRIMROSE	LL	570	17'X27'	—	40	25	30	40	30	25	3	—
BEGONIA	LL	804	17'X27'	—	40	25	30	40	30	25	3	—
IRIS	UL	804	17'X27'	—	40	25	30	40	30	25	3	—
GARDENIA	UL	570	17'X27'	—	40	25	30	40	30	25	3	—
HIBISCUS	UL	560	17'X27'	—	40	25	30	40	30	25	3	—
JASMINE	1	570	17'X27'	—	40	25	30	40	30	25	3	—
LANTANA	UL	804	17'X27'	—	40	25	30	40	30	25	3	—
COURTYARD	1	3,558	—	—	—	—	—	180	150	—	15	12

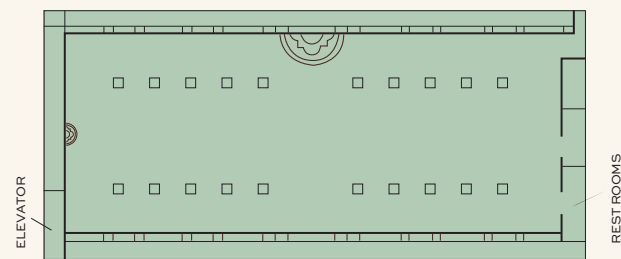
Flexible, Next Generation Event & Meeting Space.

OUTDOOR SPACE

SUNRISE TERRACE



STARLIGHT TERRACE



Meeting Room Capacities Were Determined Using 72" Rounds Of 10 (Rounds Capacity), Three Chairs Per 6'X30" Table (U-Shape Capacity) And Three Chairs Per 6'X18" Table (Classroom Capacity) Allowing For Minimal Audiovisual Equipment.

	FLOOR	SQUARE FOOTAGE	DIMENSIONS	CEILING HEIGHT	THEATER	CLASSROOM	CONFERENCE	RECEPTION	BANQUET	U-SHAPE	10 ROUNDS	12 ROUNDS
OUTDOOR SPACE												
STARLIGHT TERRACE	1	10,000	152'X66'	—	40	25	30	1,000	600	—	60	50
5TH FAIRWAY	1	32,000	—	—	—	—	—	3,000	1,500	—	150	125
LAS PALMAS LAWN	1	8,625	75'X115'	—	—	—	—	1,000	700	—	70	60
SUNRISE TERRACE	1	3,000	—	—	—	—	—	300	200	—	20	17
AZURE POOL	1	—	—	—	—	—	—	100	70	—	7	6
SPA POOL	1	—	—	—	—	—	—	60	50	—	5	4



**OMNI RANCHO LAS PALMAS
RESORT & SPA**
**41000 BOB HOPE DRIVE, RANCHO
MIRAGE, CALIFORNIA 92270**
**OMNIHOTELS.COM/HOTELS/
PALM-SPRINGS-RANCHO-LAS-PALMAS**

Palm Springs

highlights.

From a getaway for Hollywood's elite in the 1930s to a haven of rest and relaxation for today's busy traveler, Palm Springs has been a welcome escape for nearly a century. Surrounded by pristine desert and three stunning mountain ranges, this unique topography makes you feel off-grid but never isolated. Explore the arid natural beauty, visit quirky boutiques and tour eclectic museums in this unmatched landscape.

AIRPORTS

Palm International Springs Airport (PSP) | 15 min
Ontario International Airport (ONT) | 1.5 hrs
Orange County-John Wayne Airport (SNA) | 2 hrs
Los Angeles Airport (LAX) | 2.5 hrs

ATTRACTIONS

Desert Jeep Tours | multiple providers
Children's Discovery Museum of the Desert | 8 min
The Living Desert Zoo & Botanical Gardens | 12 min
Indian Canyons | 28 min
Palm Springs Aerial Tramway | 33 min
Joshua Tree National Park | 43 min

ARTS & CULTURE

The McCallum Theater | 6 min
Palm Springs Art Museum | 24 min





OMNI RANCHO
LAS PALMAS

[OMNIHOTELS.COM/PALMSPRINGS](https://omnihotels.com/palmsprings)
PSPRST.LEADS@OMNIHOTELS.COM