

# Meetings & Event Guide.

OMNI SAN DIEGO HOTEL  
AT THE BALLPARK

EXPERIENCES MATTER HERE



# OMNI

SAN DIEGO  
AT THE BALLPARK



# The new SOCAL SCENE.

Newly renovated Omni San Diego Hotel at the Ballpark is the city's premier destination for memorable meetings and events. Guests can enjoy views of the San Diego Bay, downtown skyline and Petco Park from 511 modern guest rooms, while an expansive pool deck and three restaurants create an urban resort in the heart of the city. In the historic Gaslamp Quarter steps from the San Diego Convention Center, there are countless things to do following an event.

Omni San Diego Hotel at the Ballpark offers 24 indoor and outdoor meeting and event spaces, totaling over 32,000 square feet. The expansive Grand Ballroom can host up to 1,200 event attendees while the 4,000 square foot 6th floor rooftop terrace is ideal for cocktail receptions with stunning city and ocean views. Just 17 minutes from San Diego International Airport, there's no hotel better situated for events, meetings, conferences and weddings in sunny Southern California.





# *about* Omni San Diego Hotel at the Ballpark.

## **SOCIAL STYLE AND URBAN ELEGANCE**

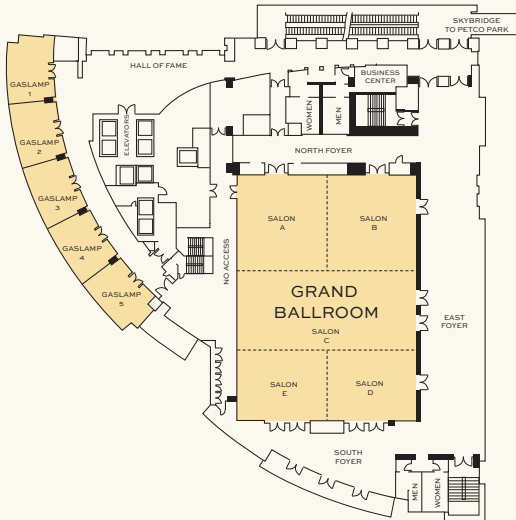
Omni San Diego Hotel at the Ballpark is an urban retreat in the heart of the city. Take in the sights of the neighborhood from the 6th floor terrace, where a heated outdoor pool and hot tub welcome you to lounge as long as you'd like. Sample the fare of three distinct restaurants, and keep your mind and body sharp with a workout at the 24-hour fitness center.



- 511 guest rooms and suites, featuring bay and city views
- 32,000 square feet of flexible indoor and outdoor event space, including the 9,266 square foot Grand Ballroom and the nearly 5,000 square foot Gallery featuring distinct baseball themed artwork for purchase
- Fast Wi-Fi, the latest AV technology and helpful professional services
- 8,000 square foot 6th floor sundeck with heated swimming pool, hot tub and outdoor lounge
- Three unique dining experiences including breakfast and lunch at lobby-side Fres.co, relaxed California fare at Ace Porter and refreshing cocktails and light bites at Tortuga, our poolside Terrace Bar
- Massage services available from third-party providers, including deep tissue, reflexology and custom massage therapies
- 24-hour fitness center including free weights, Peloton® bikes, Cybex and StairMaster® equipment

# Flexible, Next Generation Event & Meeting Space.

4TH FLOOR



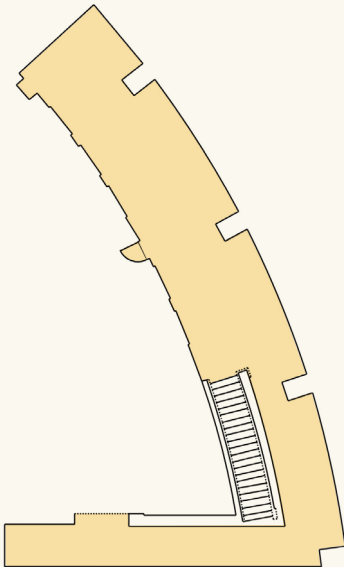
5TH FLOOR



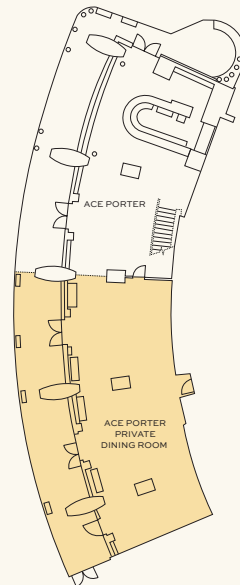
6TH FLOOR



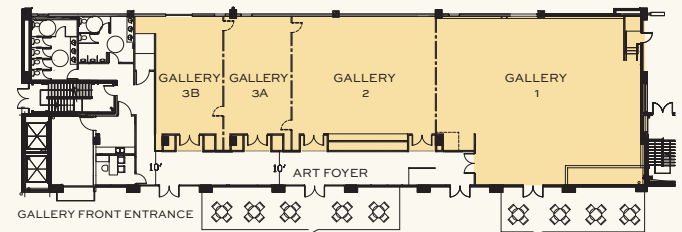
2ND FLOOR MEZZANINE



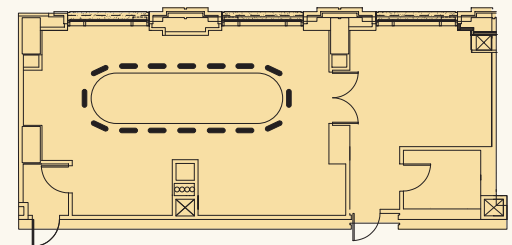
1ST FLOOR



GROUND FLOOR GALLERY



19TH FLOOR SKYBOX



|                         | SQUARE<br>FOOTAGE | DIMENSIONS | CEILING<br>HEIGHT | BANQUET<br>72" | CLASSROOM<br>18" | CONFERENCE | THEATER | RECEPTION | EXHIBIT<br>8 X 10 | EXHIBIT<br>10 X 10 | HOLLOW<br>SQUARE |
|-------------------------|-------------------|------------|-------------------|----------------|------------------|------------|---------|-----------|-------------------|--------------------|------------------|
| <b>FLOOR 4</b>          |                   |            |                   |                |                  |            |         |           |                   |                    |                  |
| GRAND<br>BALLROOM       | 9,266             | 82' x 113' | 19'               | 600            | 495              | –          | 800     | 1,200     | 59                | 47                 | –                |
| BALLROOM A              | 1,804             | 41' x 44'  | 19'               | 100            | 96               | –          | 140     | 175       | 11                | 9                  | 40               |
| BALLROOM B              | 1,804             | 41' x 44'  | 19'               | 100            | 96               | –          | 140     | 175       | 11                | 9                  | 40               |
| BALLROOM C              | 2,870             | 82' x 35'  | 19'               | 160            | 108              | –          | 300     | 300       | 18                | 14                 | 50               |
| BALLROOM D              | 1,394             | 41' x 34'  | 19'               | 80             | 72               | –          | 125     | 150       | –                 | –                  | 40               |
| BALLROOM E              | 1,394             | 41' x 34'  | 19'               | 80             | 72               | –          | 125     | 150       | –                 | –                  | 40               |
| GASLAMP 1               | 594               | 22' x 27'  | 10'               | 48             | 32               | 24         | 55      | 63        | –                 | –                  | 24               |
| GASLAMP 2               | 594               | 22' x 27'  | 10'               | 48             | 32               | 24         | 55      | 63        | –                 | –                  | 24               |
| GASLAMP 3               | 594               | 22' x 27'  | 10'               | 48             | 32               | 24         | 55      | 63        | –                 | –                  | 24               |
| GASLAMP 4               | 594               | 22' x 27'  | 10'               | 48             | 32               | 24         | 55      | 63        | –                 | –                  | 24               |
| GASLAMP 5               | 594               | 22' x 27'  | 10'               | 48             | 32               | 24         | 55      | 63        | –                 | –                  | 24               |
| <b>FLOOR 5</b>          |                   |            |                   |                |                  |            |         |           |                   |                    |                  |
| BALBOA 1                | 532               | 28' x 19'  | 10'6"             | 40             | 25               | 22         | 45      | 53        | –                 | –                  | 20               |
| BALBOA 2                | 532               | 28' x 19'  | 10'6"             | 40             | 25               | 22         | 45      | 53        | –                 | –                  | 20               |
| BALBOA 3                | 532               | 28' x 19'  | 10'6"             | 40             | 25               | 22         | 45      | 53        | –                 | –                  | 20               |
| BALBOA 4                | 532               | 28' x 19'  | 10'6"             | 40             | 25               | 22         | 45      | 53        | –                 | –                  | 20               |
| <b>FLOOR 6</b>          |                   |            |                   |                |                  |            |         |           |                   |                    |                  |
| BOARDROOM 1             | 544               | 34' x 16'  | 9'                | –              | –                | 14         | –       | –         | –                 | –                  | –                |
| BOARDROOM 2             | 544               | 34' x 16'  | 9'                | –              | –                | 14         | –       | –         | –                 | –                  | –                |
| TORTUGA<br>TERRACE      | 4,000             | –          | –                 | 170            | –                | –          | –       | 300       | –                 | –                  | –                |
| SAIL TERRACE            | 1,000             | –          | –                 | 70             | –                | –          | –       | 90        | –                 | –                  | –                |
| <b>FLOOR 19</b>         |                   |            |                   |                |                  |            |         |           |                   |                    |                  |
| SKYBOX                  | 850               | –          | 10'               | –              | –                | 15         | –       | –         | –                 | –                  | –                |
| <b>GROUND FLOOR</b>     |                   |            |                   |                |                  |            |         |           |                   |                    |                  |
| ACE PORTER              | 2,600             | –          | –                 | 120            | –                | –          | –       | 200       | –                 | –                  | –                |
| ACE PORTER<br>MEZZANINE | 1,645             | –          | –                 | 60             | –                | –          | –       | 85        | –                 | –                  | –                |
| GALLERY                 | 4,794             | –          | –                 | 350            | –                | –          | –       | 367       | –                 | –                  | –                |
| GALLERY 1               | 2,061             | 62' x 50'  | 11'2"             | 180            | 164              | 49         | 220     | 250       | –                 | –                  | 60               |
| GALLERY 2               | 1,355             | 41' x 33'  | 12'               | 72             | 75               | 34         | 198     | 150       | –                 | –                  | 35               |
| GALLERY 3A              | 730               | 22' x 33'  | 12'               | 36             | 40               | 22         | 102     | 75        | –                 | –                  | 38               |
| GALLERY 3B              | 647               | 19' x 33'  | 12'               | 48             | 35               | 22         | 80      | 75        | –                 | –                  | 30               |

MEETING ROOM CAPACITIES WERE DETERMINED USING 72" ROUNDS OF 10 (ROUNDS CAPACITY), THREE CHAIRS PER 6'X30" TABLE (U-SHAPE CAPACITY) AND THREE CHAIRS PER 6'X18" TABLE (CLASSROOM CAPACITY) ALLOWING FOR MINIMAL AUDIOVISUAL EQUIPMENT.



**OMNI SAN DIEGO HOTEL AT THE BALLPARK**  
**675 L STREET**  
**SAN DIEGO, CALIFORNIA 92101**

**[OMNIHOTELS.COM/SANDIEGO](https://omnihotels.com/sandiego)**

# San Diego

## *highlights.*

Soak up the San Diego sun at southern California's premier meeting and event destination. Located in the vibrant Gaslamp Quarter, home to over 200 restaurants and bars, you'll find yourself in the center of everything. Cross the pedestrian Omni Skybridge to Petco Park for a thrilling Padres game. Visit science and history museums for inspiration. Enjoy a relaxing harbor cruise, explore Balboa Park and bask in the beauty of SoCal.

### AIRPORT

San Diego International Airport | 17 min

### ATTRACTIONS

Petco Park, home of the MLB's San Diego Padres | connected via skybridge  
 San Diego Convention Center | 1/2 block  
 Old Town Trolley Tours, Stop H | 2 blocks  
 Seaport Village | 8 blocks  
 San Diego Zoo | 10 min  
 SeaWorld San Diego | 15 min  
 Mission Beach Boardwalk | 17 min

### ARTS & CULTURE

San Diego Children's Museum | 5 blocks  
 The Rady Shell at Jacobs Park | 6 blocks  
 Balboa Theatre | 9 blocks  
 San Diego Civic Theatre | 12 blocks  
 Balboa Park | 6 min  
 Fleet Science Center | 9 min  
 San Diego Air & Space Museum | 9 min  
 USS Midway Museum | 10 min  
 Natural History Museum | 10 min  
 The Old Globe | 11 min  
 Old Town State Park | 12 min

