

Meetings & Event Guide.

EXPERIENCES MATTER HERE



OMNI
TUCSON NATIONAL

Table *of* Contents

INTRODUCTION	03
EVENTS OVERVIEW	05
GUEST ROOMS	06
HACIENDA & CASITA SUITES	07
DINING EXPERIENCES.....	08
PAPAGO BALLROOM & TERRACE	09
MOKARA SPA.....	10
GOLF EXPERIENCES	11
TUCSON HIGHLIGHTS	13
MEETING SPACES & FLOORPLANS	14



INTRODUCTION

Meet us in the desert.



Inspired by the surrounding Sonoran Desert, Omni Tucson National Resort is a serene retreat for memorable events. Recently renovated guest rooms, including Hacienda and Casita suites, are modern and light for a restful stay. Two distinct golf courses highlight the region's natural beauty, from the majestic Santa Catalina Mountains to the surrounding native desert plant life. With over 30,000 square feet of meeting and event space, Omni Tucson National Resort is the ideal location for your next event.

OMNI TUCSON NATIONAL RESORT

Exceptional experiences begin the moment you arrive.

Omni Tucson National Resort dissolves the line between indoors and out with natural light from stunning vistas.

Modern design takes cues from Spanish-style haciendas and traditional Southwest Adobe architecture. Floor-to-ceiling windows throughout offer stunning views of the mountain landscape. Expansive outdoor spaces bring you closer to the iconic cacti and wide-open skies of the Sonoran Desert.

Enjoy enriching experiences like championship golf, spa services and sunny days at two spacious pools.





EVENTS OVERVIEW

Our spaces, your moments.

- 130 Southwest-inspired guest rooms, casitas and haciendas with private patios or balconies
- 30,000 square feet of flexible indoor and outdoor meeting and event space, including the 2,870-square-foot Papago Ballroom with expansive terrace and mountain views
- On-site audiovisual equipment services and Wi-Fi internet access
- Six culinary outlets including award-winning Bob's Steak & Chop House, The Peak lobby bar with mountain views, grab-and-go Terra Cotta Cafe, Sweet Water Terrace poolside bar and more
- Two 18-hole championship golf courses including the Catalina Golf Course overlooking the mountains and the desert-style Sonoran Golf Course for a unique challenge. Purchase supplies at the Golf Shop, and work on your swing at the Golf Practice Facility with a dedicated instructor
- 9,000-square-foot salon and spa with 12 treatment rooms and access to Sweet Water Pool
- Two pools, including a peaceful zero-edge pool with lounge seating and private cabanas
- 24-hour fitness center including Peloton®, free weights, resistance machines and more

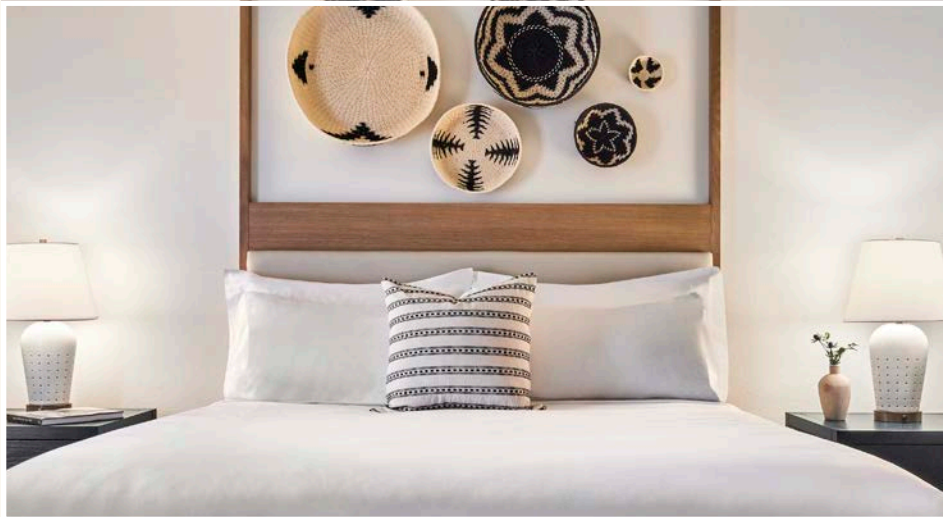


GUEST ROOMS

Defined by design.

THOUGHTFUL SPACES AND A WARM WELCOME

Each of our 130 guest rooms and suites offers an ideal desert retreat. Finished in light, airy style inspired by the tranquility of the Southwest, guests can relax and enjoy panoramic views of the mountains and championship golf courses.



HACIENDA & CASITA SUITES

Home-style comfort, resort-style care.

SPACES TO REMEMBER

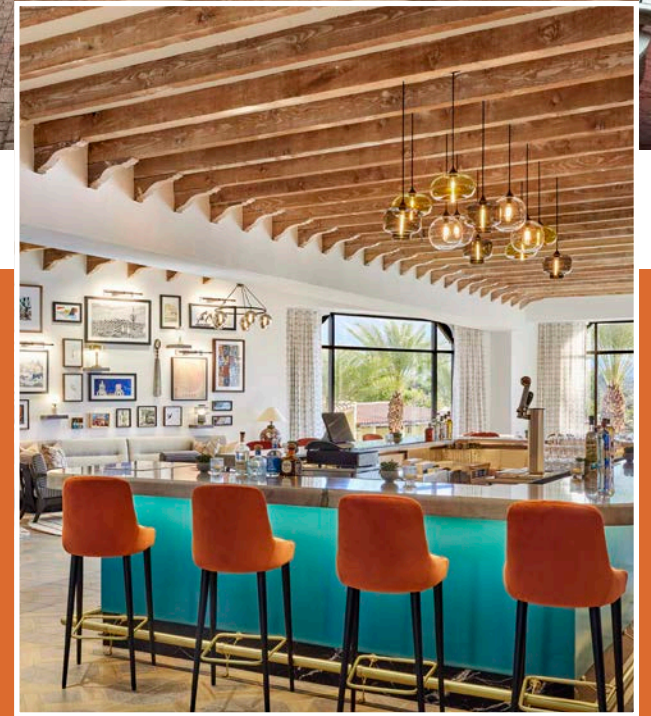
Omni Tucson National Resort offers 51 desert-inspired Hacienda and Casita suites. Secluded patios open to stunning views of championship golf courses or the expansive mountain landscape. These private spaces provide a residential experience combined with the comforts and amenities of a modern resort.



DINING EXPERIENCES

Savor every moment.

From the warm welcome of a traditional steak house to cocktails under the Southwestern sun, each restaurant at Omni Tucson National Resort offers a distinctive approach to indulgent dining.



BOB'S STEAK & CHOP HOUSE // A classic steak house featuring all prime beef and an inviting Texas-style atmosphere.

DESERT FARMER // A bright, modern all-day eatery with sustainable fare and creative cocktails.

TERRA COTTA CAFE // Offering handcrafted coffee and tea, as well as convenient grab-and-go snacks, sundries and signature souvenirs.

LEGENDS BAR & GRILL // Compare notes from the green over a game of billiards, hearty sandwiches and a full bar.

THE PEAK // Enjoy garden-to-glass cocktails at our lobby lounge with views of the mountain landscape.

SWEET WATER TERRACE // Sample seasonal light bites and refreshing cocktails poolside.

PAPAGO BALLROOM & TERRACE

Where modern meets the mountains.



CONNECT AND CREATE IN AN UNFORGETTABLE SPACE

Our 2,870-square-foot Papago Ballroom offers the ideal venue for special events. The space blends modern design with traditional elements like clean, neutral color palate and an open-beam ceiling. Large windows overlook the Santa Catalina Mountains, and guests can mingle indoors or out on the adjoining covered terrace.



MOKARA SPA

Find relaxation & rejuvenation.



Wide open spaces and the quiet of the desert are naturally relaxing. Sink deeper into tranquility at Mokara Spa, with signature facials, massages and body wraps in 12 private treatment rooms. Between services, rest in couple's relaxation lounges or visit the steam rooms or saunas. Complete your spa visit with a service from our luxury salon.



GOLF EXPERIENCES

PGA® golf in a distinctive desert setting.

The golf experience is unmatched at Omni Tucson National Resort. As a PGA TOUR® host course, our fairways are expertly maintained and unique to this beautiful landscape.

CATALINA COURSE // 18 Holes/Par 73 // One of Golf Digest's 75 Best Golf Courses in North America and host to over 30 years of PGA tour events, this traditional course features 80 bunkers and eight serene lakes, as well as majestic mountain views.

SONORAN COURSE // 18 Holes/Par 70 // Play through steep elevation changes, 69 bunkers and native plant life at this desert-style course.



EXPERIENCES

A world of family adventures.

Omni Tucson National Resort is a place to relax and unwind amid scenic vistas with family and friends. Our 130 guestrooms, including newly renovated Hacienda and Casita Suites, are welcoming retreats after days exploring Arizona hiking trails, diving into resort pools or golfing championship courses.

Unwind further with a Mokara Spa treatment and indulge in regionally inspired cuisine or signature cocktails overlooking the Catalina Mountains at sunset from our Tucson resort. Discover culture and arts in Downtown Tucson, tour Old Tucson Movie Studios or explore Biosphere-2, a world-renowned ecosystem experiment nearby.

Whether visiting our Tucson, AZ hotel for business or pleasure, you'll be welcomed with warm, personal service and sent off with lifelong memories.



Tucson highlights.

ARTS & CULTURE

Arizona-Sonora Desert
Museum

Center for Creative
Photography

Degrazia Gallery in the Sun

Downtown Tucson

Pima Air & Space Museum

Tohono Chul Botanical
Gardens & Galleries

ATTRACTIONS

Biosphere 2

Kino Sports Complex

Kitt Peak National
Observatory

Mission San Xavier del Bac

Mt. Lemmon

Tombstone, Arizona

DINING

Bob's Steak & Chop House

Legends Bar & Grill

The Peak

Desert Farmer

Terra Cotta Café

Sweet Water Terrace

RECREATION

Catalina State Park

Saguaro National Park

Sabino Canyon

Tucson Mountain Park

SHOPPING

4th Avenue District

La Encantada

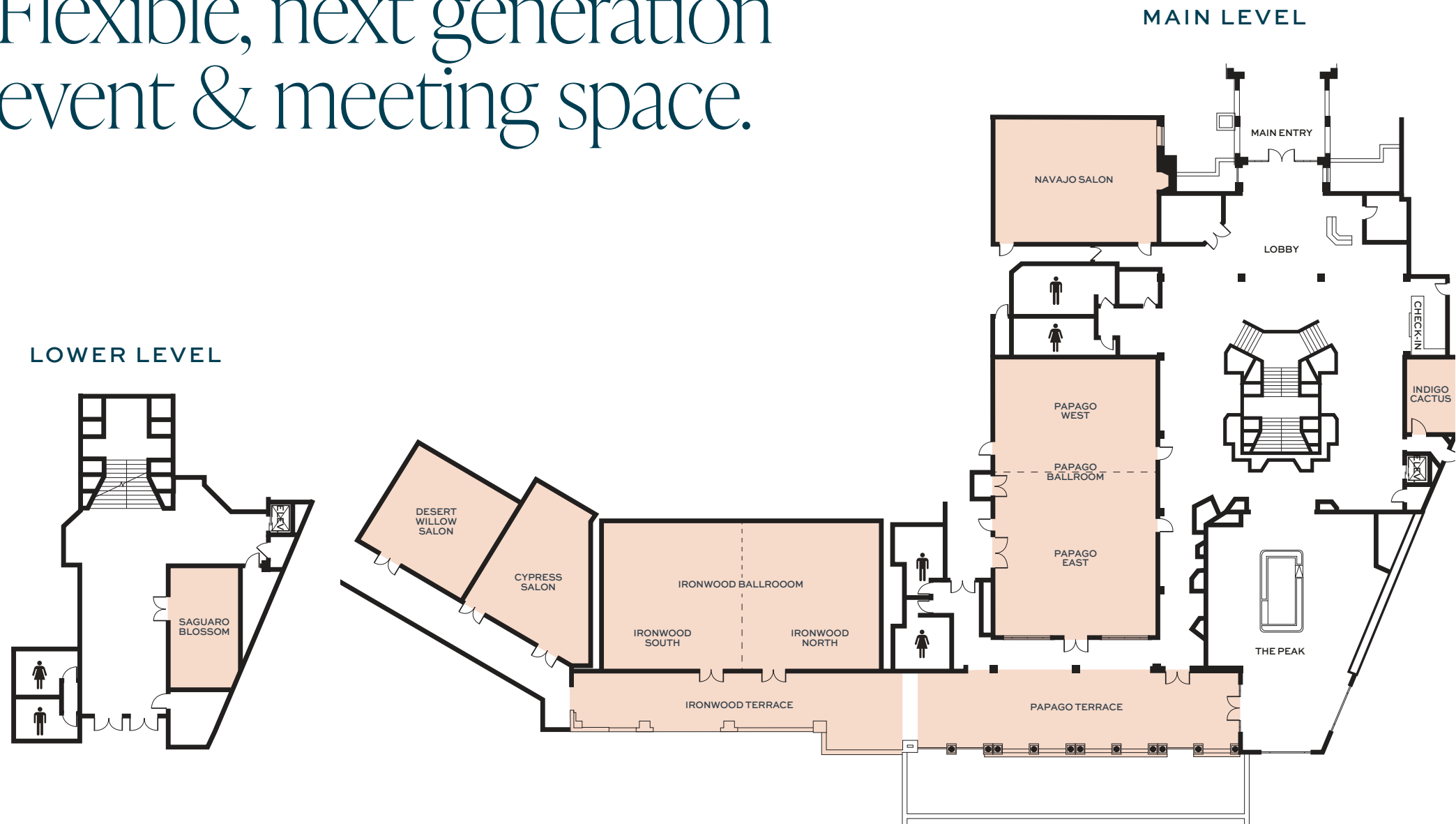
Main Gate Square

Old Town Artisans

Tucson Mall

Tucson Premium Outlet Mall

Flexible, next generation event & meeting space.



OMNI TUCSON NATIONAL RESORT

Meeting room capacity.

	SQUARE FOOTAGE	DIMENSIONS	CEILING HEIGHT	AIR WALLS	THEATER	CLASSROOM 18"	CLASSROOM 30"	BANQUET 60"	RECEPTION	CONFERENCE	HOLLOW SQUARE
PAPAGO											
PAPAGO BALLROOM	2,870	70' x 41'	12'6"	YES	290	198	120	240	350	—	80
PAPAGO EAST	1,558	38' x 41'	12'6"	YES	155	70	55	100	130	25	42
PAPAGO WEST	1,312	32' x 41'	12'6"	YES	130	52	35	90	110	25	36
PAPAGO TERRACE	2,000	—	12'6"	—	—	—	—	140	190	—	—
IRONWOOD											
IRONWOOD BALLROOM	2,652	68' x 39'	12'6"	YES	225	160	100	220	300	—	72
IRONWOOD SOUTH	1,326	34' x 39'	12'6"	YES	90	50	40	90	110	25	36
IRONWOOD NORTH	1,326	34' x 39'	12'6"	YES	90	50	40	90	110	25	36
IRONWOOD TERRACE	1,000	—	12'6"	—	—	90	72	60	120	—	—
INDIVIDUAL SPACES											
CYPRESS SALON	1,054	32' x 31'	12'6"	—	70	40	27	50	90	25	25
DESERT WILLOW SALON	783	27' x 29'	12'6"	—	50	36	25	50	70	25	20
NAVAJO SALON	1,270	41' x 31'	12'6"	—	110	50	36	80	110	20	34
INDIGO CACTUS	247	19' x 13'	9'4"	—	—	—	—	—	—	10	—
SAGUARO BLOSSOM	368	16' x 23'	9'	—	40	15	10	30	35	10	15
OUTDOOR SPACES											
MESQUITE GULCH	5,400	—	—	—	—	—	—	360	450	—	—
SWEET WATER POOL	1,500	—	—	—	—	—	—	130	168	—	—
NORVILLE LAWN	6,000	—	—	—	—	—	—	400	500	—	—

Meeting room capacities are determined by the use of the "Arranger & Comfort Calculator," a standardized meeting room capacity measurement system used by Meeting Professionals International. 60" banquet capacities are based on 10 persons per table.



OMNI TUCSON
NATIONAL

OMNIHOTELS.COM/TUCSON
TUSNTLLEADS@OMNIHOTELS.COM